

IF STAYING HOME...



- Turn refrigerator to maximum cold and only open when necessary
- Turn off utilities if told to do so
- Turn off propane tanks
- Unplug all appliances
- Fill bathtub and large containers with water for sanitary purposes

IF THE WINDS BECOME STRONG...



- Stay away from windows and doors even if they are covered. Take refuge in a small interior room, closet, or hallway
- Close all interior doors and secure external doors
- While in a two-story house, take shelter in an interior first-floor room, bathroom, or closet
- Lie on the floor under a table or other sturdy object

AFTER THE STORM...



- Keep listening to TV or radio for updates
- Wait until area is safe before entering
- Roads may be closed for your safety. If an area is blocked off or flooded, turn around and go another route
- Avoid weakened bridges and flooded areas
- Use phones for emergencies only
- Do not use tap water to drink or prepare food unless you are certain it is not contaminated
- Be cautious when using chainsaws!

- Stay on firm ground, away from water (water and electricity do not mix!)
- Avoid candles or other open flames while indoors. Use flashlights
- Check gas, water, and electrical lines for damage. Report them immediately
- As soon as possible, try to make contact with the Port of South Louisiana
- You may receive instructions through one of the following resources:
 - Command Center Hotline 985.536-1118
 - Local TV or radio stations - WWLTV 4, WDSU 6, WVUE 8, WGNO 26, WWL AM 870
 - Contact with immediate supervisor
 - Auxiliary Websites
 - www.aapa-ports.org
(American Assoc. of Port Authorities) or
 - www.portsoflouisiana.org
(Ports Association of LA.)

Updated May 3, 2016/ah



If you do not have pre-established plans of evacuation, or if your plans change, please call

866.536.3678 or 985.536.1118

to advise the Port of South Louisiana where you are and how you can be reached.

This information is important in order to provide employees with post-storm instructions on when and how to return to work.

985.652.9278 phone | www.portsl.com | info@portsl.com

CONNECT WITH US:

Hurricane/Severe Weather Information



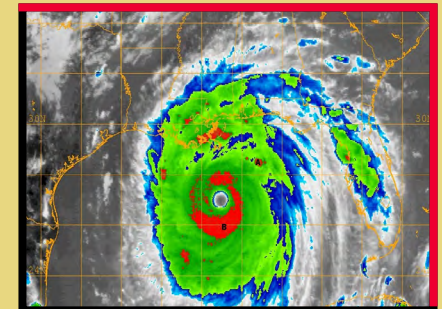
B
E
P
R
E
P
A
R
E
D

Natural disasters disrupt normal life.

Services become unavailable.

Transportation and mobility is hindered.

You may even be forced to evacuate.



Inside:

PERSONAL & FAMILY HURRICANE PREPAREDNESS

Provided by:



855.SLA-PORT | 985.652.9278

Emergency/Severe Weather Work Info:

866.536-3678 | 985.536.1118

PERSONAL AND FAMILY HURRICANE PREPAREDNESS

INITIAL PREPARATIONS



- Know the hurricane risks in your area
- Plan and prepare a present evacuation route
- Locate emergency shelters in your area
- Take inventory and prepare emergency equipment [e.g., flashlights, generator, radios, medical kit(s), etc.]
- Stock up on water and non-perishable foods
- Take inventory and store enough plywood to properly secure your property
- Clear gutters and downspouts
- Keep trees and bushes trimmed
- Have your insurance policies reviewed (e.g., home, auto, etc.)
- Take accurate photographs of all your property (inside and out) and store in a safe place
- Locate main fuse box/circuit breaker, water service main, and natural gas main. Know how and when to shut off. Keep tools nearby

HURRICANE WATCH



- Listen to local TV or radio for official bulletins of the storm's progress
- Fuel and service family vehicles
- Secure mobile home tie-downs

- Prepare to cover window and door openings with shutters or plywood
- Stock up on canned food, water, batteries, first aid supplies, etc.
- Move loose, light-weight objects in doors (e.g., lawn furniture, garbage cans, etc.)
- Have emergency cash reserves on hand
- Wedge sliding glass doors to prevent them from moving off-track
- If you own a small boat, move it to a safe location

HURRICANE WARNING



- Closely monitor local TV and radio for official bulletins
- Complete preparation activities (e.g., storing loose objects, boarding windows, etc.)
- Do not stay in a mobile home!
- Leave food and water for pets
- Board garage and porch doors
- Move valuables to upper floors
- Move boats on trailers close to your house and fill them with water to weigh them down (use tie-downs to anchor trailer to ground or house)
- Stay inside, away from windows on downside of the house
- If evacuating, leave early using your preset evacuation route
- Notify neighbors and family members of your evacuation plans
- Notify your immediate supervisor of your

evacuation plans and be sure to leave a contact number

- If moving to a shelter, make arrangements for pets

PLAN TO EVACUATE IF...



- You live in a mobile home
- You live in a high-rise
- You live near a river or flood plain
- You live outside of levee protection
- You live in a low-lying inland area

WHEN EVACUATING...



- Have a pre-set evacuation route
- Leave early and during daylight hours
- Travel light (valuables and important documents)
- Take blankets, sleeping bags, flashlights, food, medication, infant needs, light weight chairs, etc.
- Take food and water for your pets
- Safely unplug all electronic equipment (e.g., computer, TV, etc.)
- Shut off water, gas, and electricity before leaving, if instructed to do so
- Drive to the nearest shelter, if you plan to stay at one. Register all members of your group. Be prepared to help shelter personnel
- Notify neighbors, family, and supervisor of your evacuation plans
- Lock your house