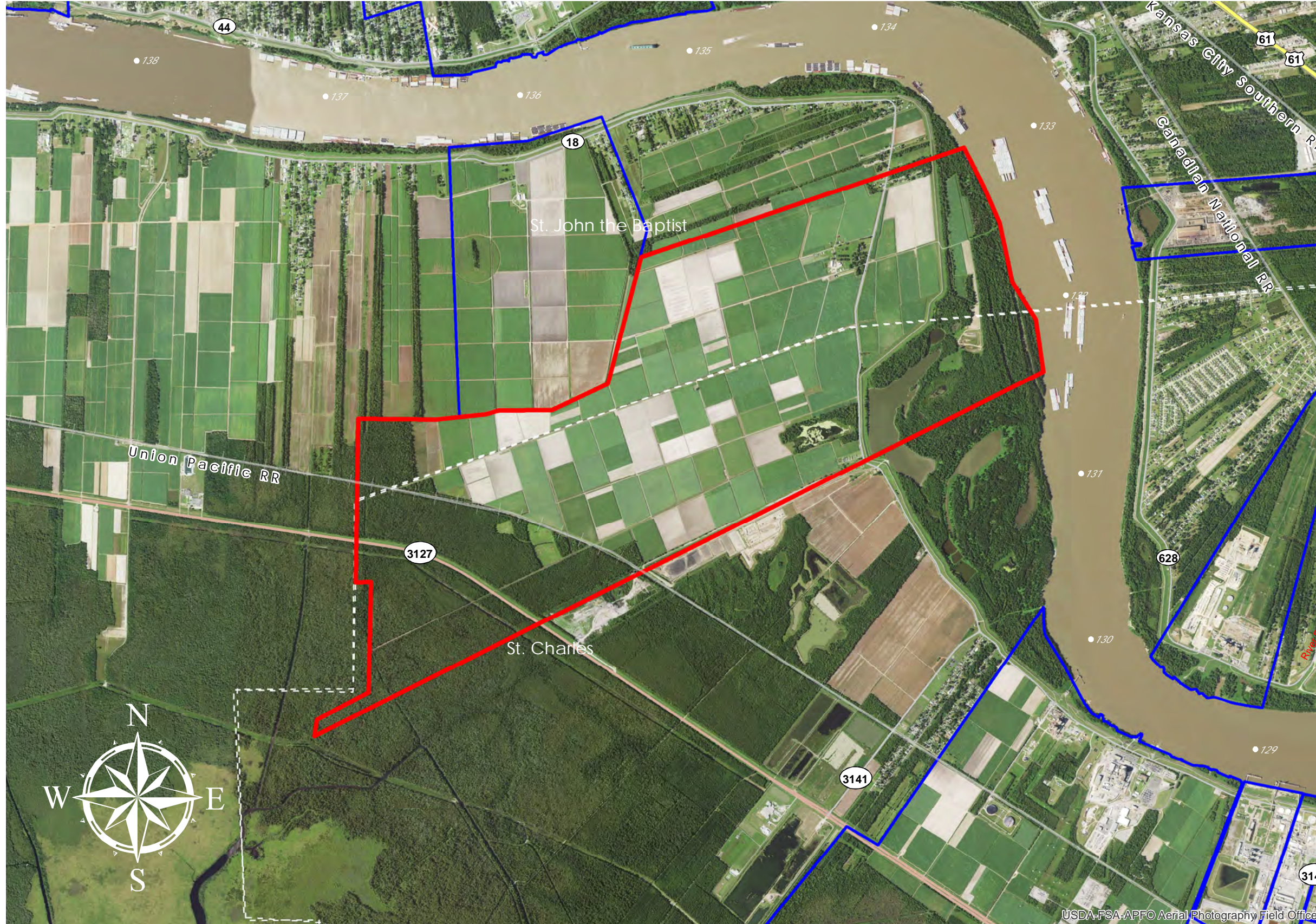
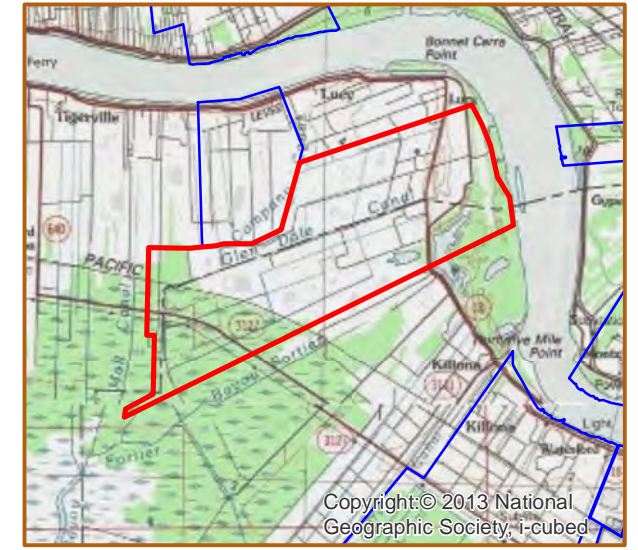
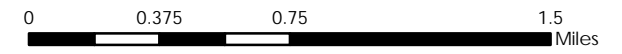


# GLENDALE HYMELIA (#82)



- GLENDALE HYMELIA
- +/- 2,500 Acres 1,011.7 Hectares
- +/- 5,808' River Frontage 1,770.3m River Frontage
- +/- 8,448' UP Rail Onsite 2,574.9m UP Rail Onsite
  
- Resident Industry
  
- Interstates
- U.S. Highway
- State Highway
  
- Railroads

Updated 2018-05-14



## Available Site Descriptions

PROPERTY NAME: **GLENDALE HYMELIA** Map #: **82**

Mile Marker: **W 131.4** Acreage: **2,500.00** Hectares: **1,011.73**

### GENERAL DETAILS

Site Draft: **Deep Draft** River Frontage (*in ft.*): **5,808.00** Rail Frontage (*in ft.*): **8,448.00**

### AGENT DETAILS

Agent: **Corey Fauchaux** Company: **St. Charles Parish Dept of ED** Phone: **(985) 783-5140**

### TRANSPORTATION

Airport: **Louis Armstrong International (21 miles); PSL Executive Regional Airport (33 miles)**

Rail: **UP (Onsite - 8,448 ft)**

Highway: **I-10 (20 miles); I-310 (9 miles); US 90 (9 miles); US 61 (15 miles); LA 3127 (Onsite); LA 18 (Onsite)**

Zoning: **Industrial** Adjacent Land Use: **Agricultural**

Access Road: **Paved** Parish: **St. Charles/St. John the Baptist**

### UTILITIES

Electricity: **Entergy** Water: **St. Charles Parish Utilities**

Natural Gas: **Atmos** Sewage: **St. Charles Parish Utilities**

Telecommunications: **AT&T & Cox**