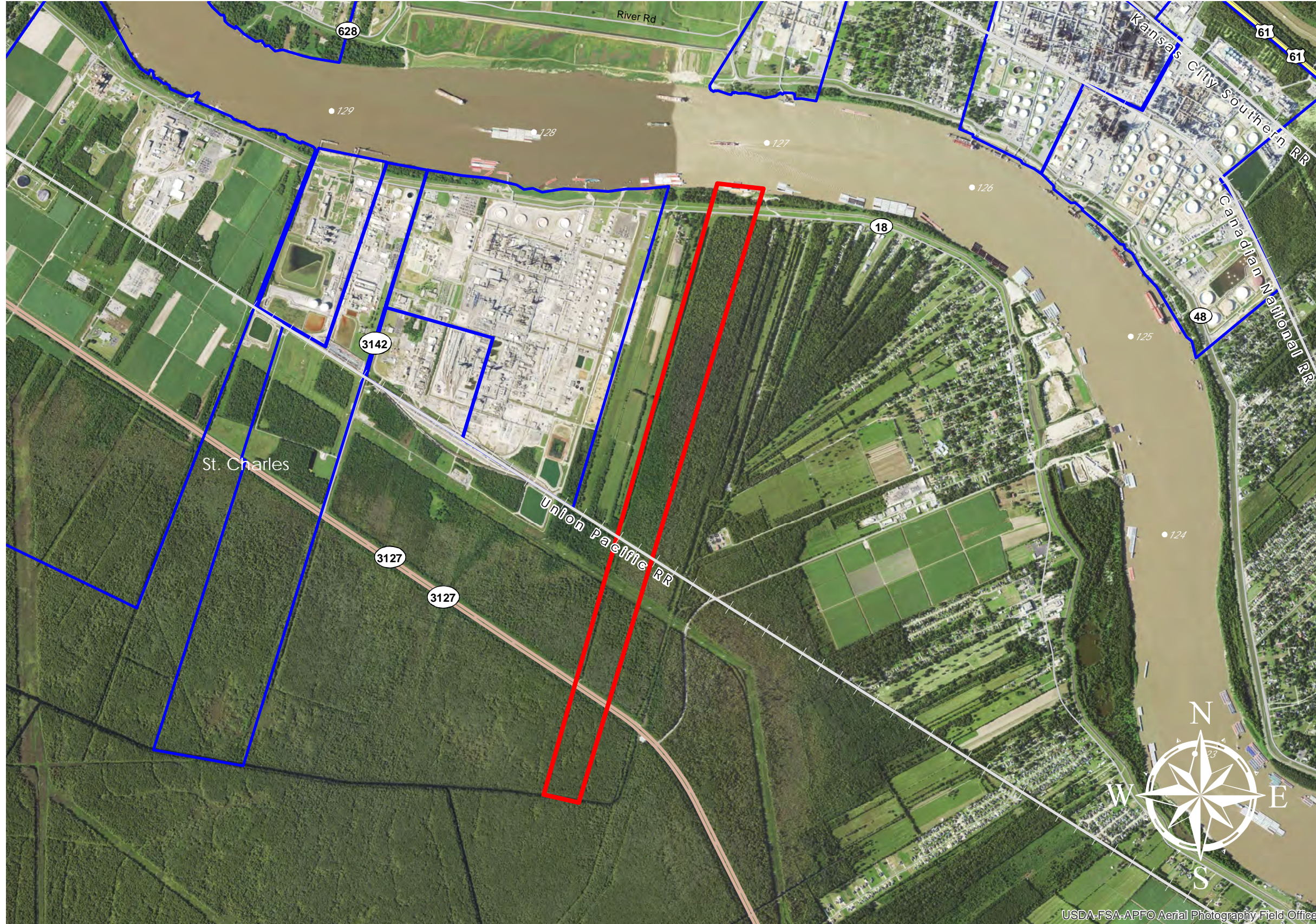


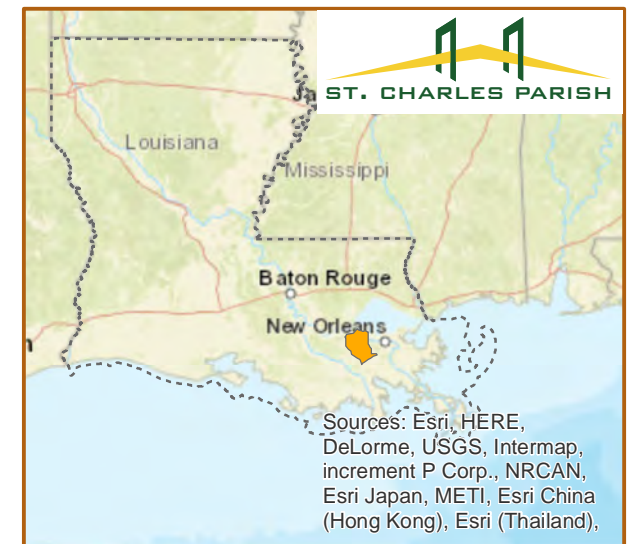
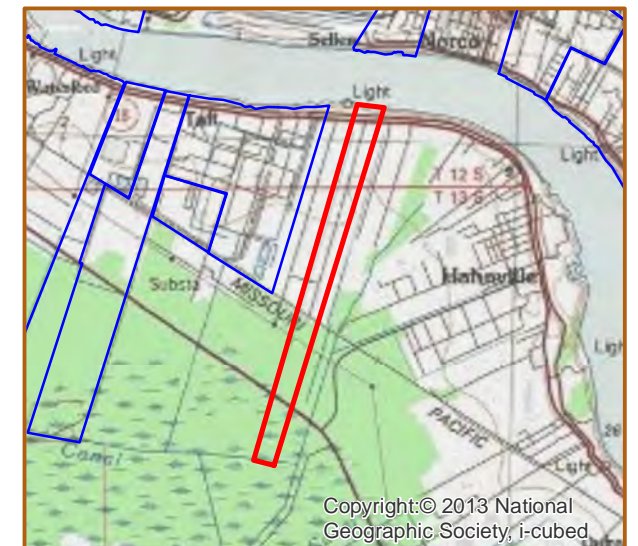
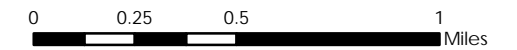
PELICAN OCCIDENTAL (#79)



PELICAN OCCIDENTAL
 +/- 489 Acres 197.9 Hectares
 +/- 1,373' River Frontage 418.5 River Frontage
 +/- 1,045' UP Rail Onsite 318.5m UP Rail Onsite

- Resident Industry
- Interstates
- U.S. Highway
- State Highway
- Railroads

Updated 2018-05-14



Available Site Descriptions

PROPERTY NAME: **PELICAN-OCCIDENTAL** Map #: **79**

Mile Marker: **W 126.8** Acreage: **489.00** Hectares: **197.89**

GENERAL DETAILS

Site Draft: **Deep Draft** River Frontage (*in ft.*): **1,373.00** Rail Frontage (*in ft.*): **1,045.40**

AGENT DETAILS

Agent: **Corey Fauchaux** Company: **St. Charles Parish Dept of ED** Phone: **(985) 783-5140**

TRANSPORTATION

Airport: **Louis Armstrong International (16 miles); PSL Executive Regional Airport (28 miles)**

Rail: **UP (Onsite - 1,045.4 ft)**

Highway: **I-10 (14 miles); I-310 (4 miles); US 90 (5 miles); US 61 (11 miles); LA 3127 (Borders); LA 18 (Borders)**

Zoning: **Industrial** Adjacent Land Use: **Agricultural**

Access Road: **Paved** Parish: **St. Charles**

UTILITIES

Electricity: **Entergy** Water: **St. Charles Parish Utilities**

Natural Gas: **Atmos** Sewage: **St. Charles Parish Utilities**

Telecommunications: **AT&T and Cox Communications**