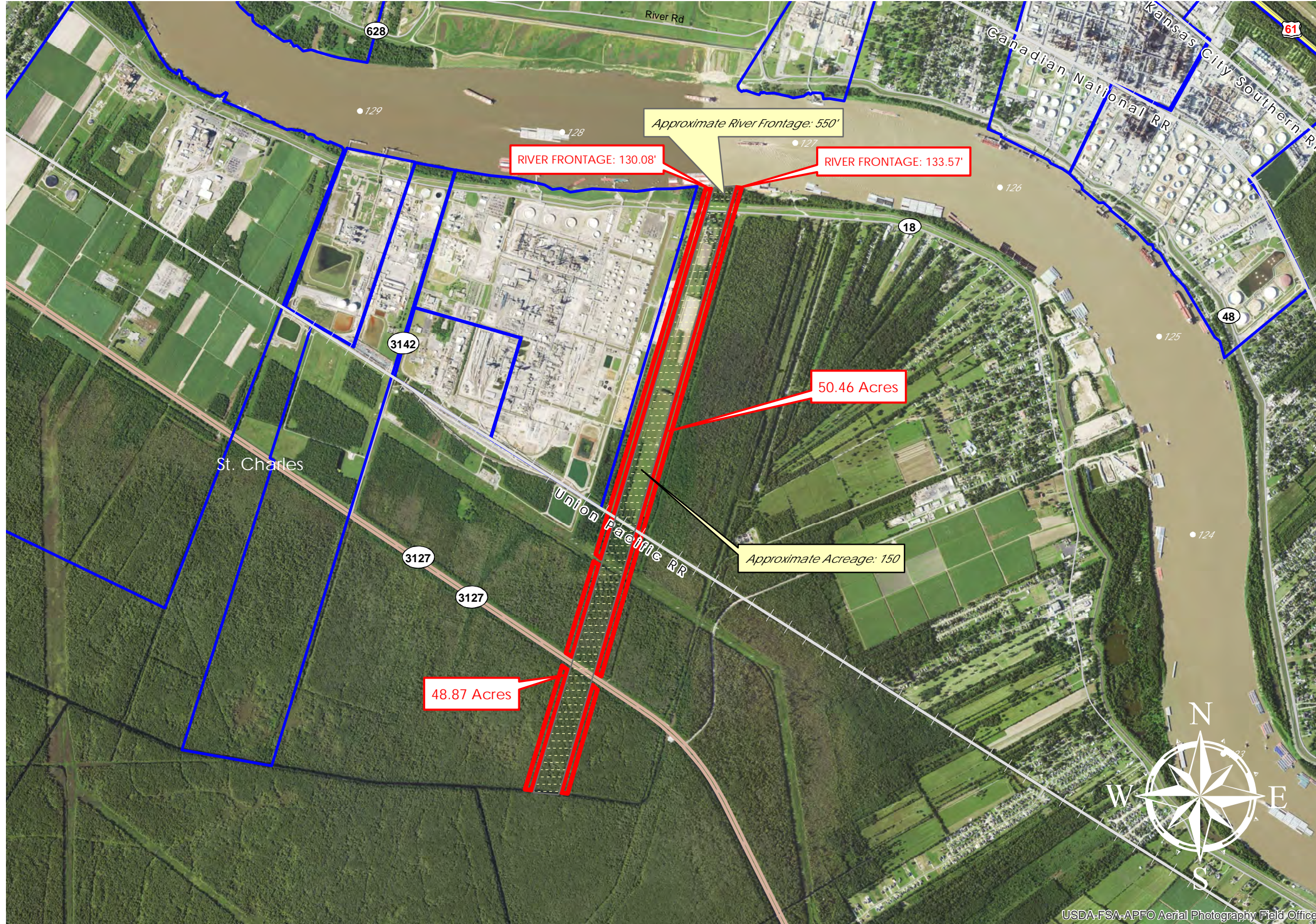


# SOLAPORT (#80)



**SOLAPORT**  
 +/- 99.3 Acres      40.2 Hectares  
 +/- 263.7' River Frontage      80.4m River Frontage  
 +/- 260.0' UP Rail Onsite      79.2m UP Rail Onsite

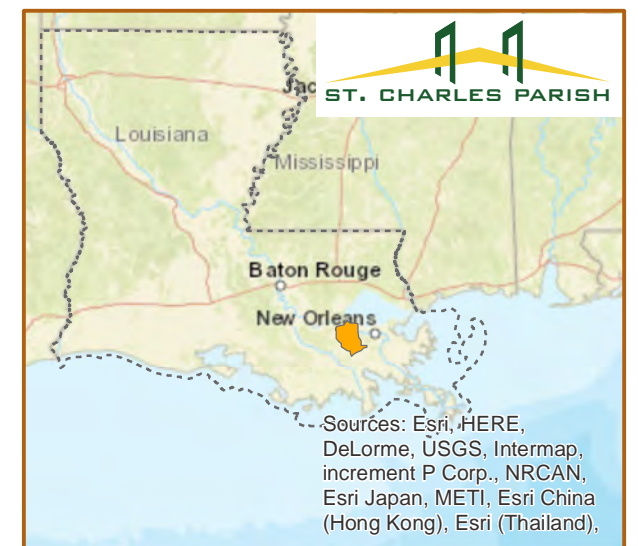
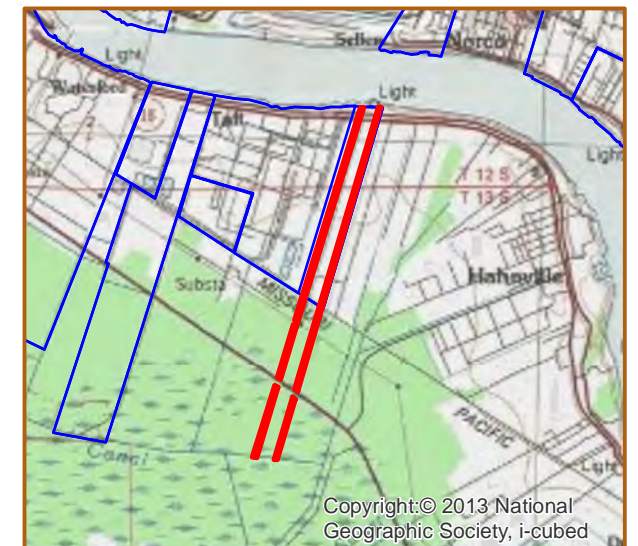
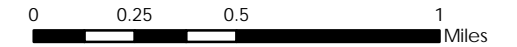
Unacquired Parcel      Resident Industry

Interstates      Railroads

U.S. Highway

State Highway

Updated 2018-05-14



USDA-FSA-APFO Aerial Photography Field Office

## Available Site Descriptions

PROPERTY NAME: **SOLAPORT** Map #: **80**

Mile Marker: **W 127.3** Acreage: **99.33** Hectares: **40.20**

### GENERAL DETAILS

Site Draft: **Deep Draft** River Frontage (*in ft.*): **263.65** Rail Frontage (*in ft.*): **260.00**

### AGENT DETAILS

Agent: **Linda Prudhomme** Company: **Port of South Louisiana** Phone: **(985) 652-9278**

### TRANSPORTATION

Airport: **Louis Armstrong International (17 miles); PSL Executive Regional Airport (29 miles)**

Rail: **UP (Onsite - 260 ft)**

Highway: **I-10 (15 miles); I-310 (5 miles); US 90 (6 miles); US 61 (12 miles); LA 3127 (Onsite); LA 18 (Borders)**

Zoning: **Industrial** Adjacent Land Use: **Industrial/Agricultural**

Access Road: **Paved** Parish: **St. Charles**

### UTILITIES

Electricity: **Entergy** Water: **St. Charles Parish Utilities**

Natural Gas: **Atmos** Sewage: **St. Charles Parish Utilities**

Telecommunications: **AT&T and Cox Communications**