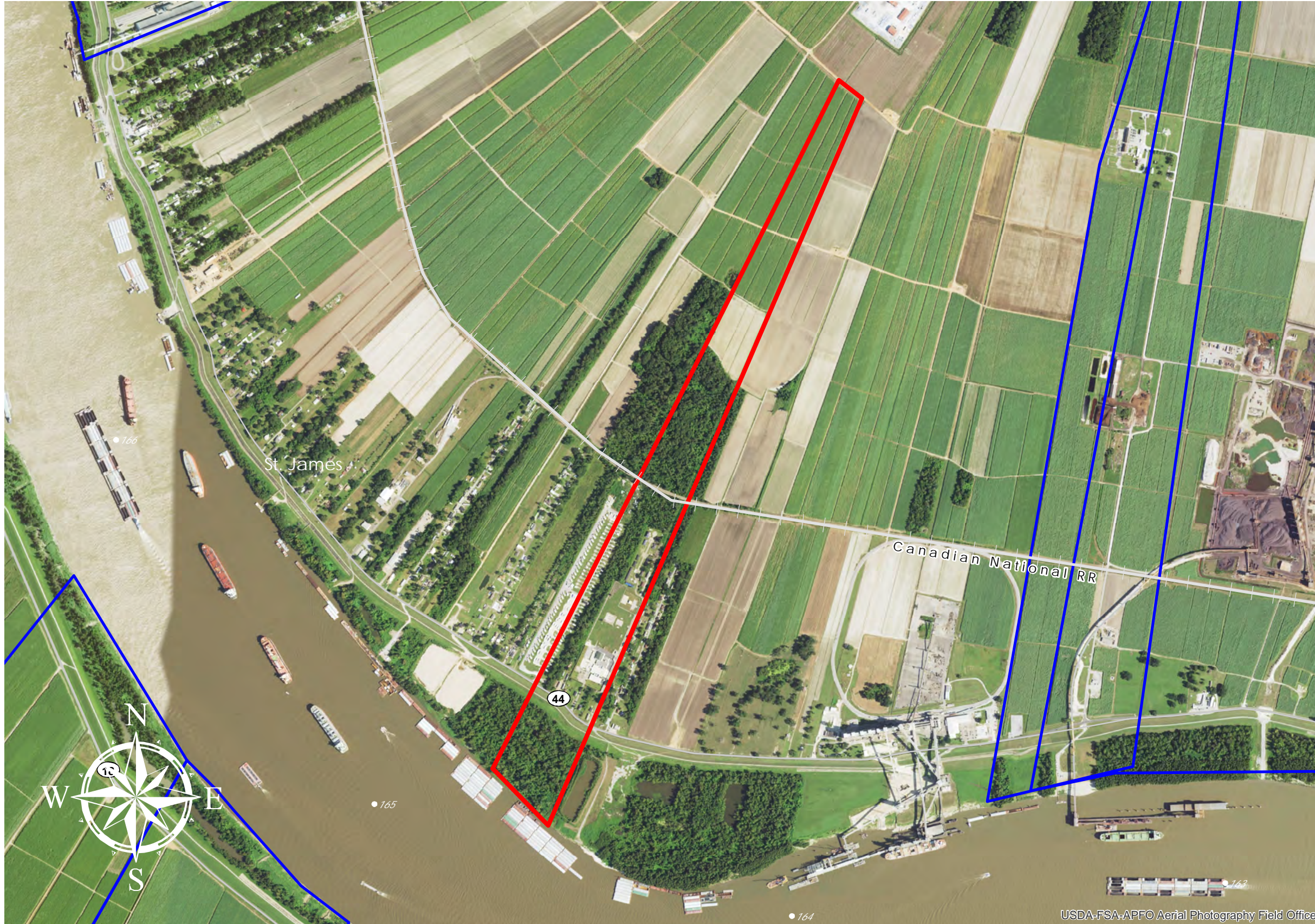
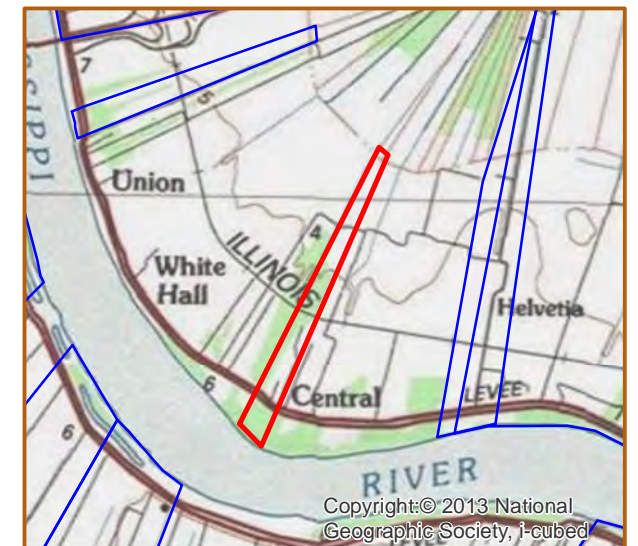
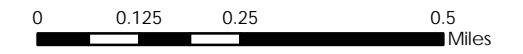


BALOT & WHITEHALL (#70)



- BALOT & WHITEHALL**
- +/- 240 Acres 97.1 Hectares
- +/- 980' River Frontage 298.7m River Frontage
- +/- 700' CN Rail Onsite 213.4m CN Rail Onsite
- Resident Industry
- Interstates
- U.S. Highway
- State Highway
- Railroads

Updated 2018-05-14



USDA-FSA-APFO Aerial Photography Field Office



Available Site Descriptions

PROPERTY NAME: **BALOT & WHITEHALL** Map #: **70**
Mile Marker: **E 165** Acreage: **240.00** Hectares: **97.12**

GENERAL DETAILS

Site Draft: **Deep Draft** River Frontage (in ft.): **980.00** Rail Frontage (in ft.): **700.00**

AGENT DETAILS

Agent: **Steve Nosacka** Company: **St. James Parish** Phone: **225-295-5631**
E-Mail: steve_trinity@cox.net

TRANSPORTATION

Airport: **Louis Armstrong International (55 miles); Baton Rouge Metropolitan (37 miles); PSL Executive Regional Airport (33 miles)**

Rail: **CN (Onsite - 700.00 ft)**

Highway: **I-10 (10 miles); US 61 (9 miles); LA 70 (2.5 miles); LA 44 (Onsite)**

Zoning: **None** Adjacent Land Use: **Agricultural**

Access Road: **Paved** Parish: **St. James**

UTILITIES

Electricity: **Entergy** Water: **St. James Parish Utilities**

Natural Gas: **St. James Parish Utilities** Sewage: **St. James Parish Utilities**

Telecommunications: **AT&T**