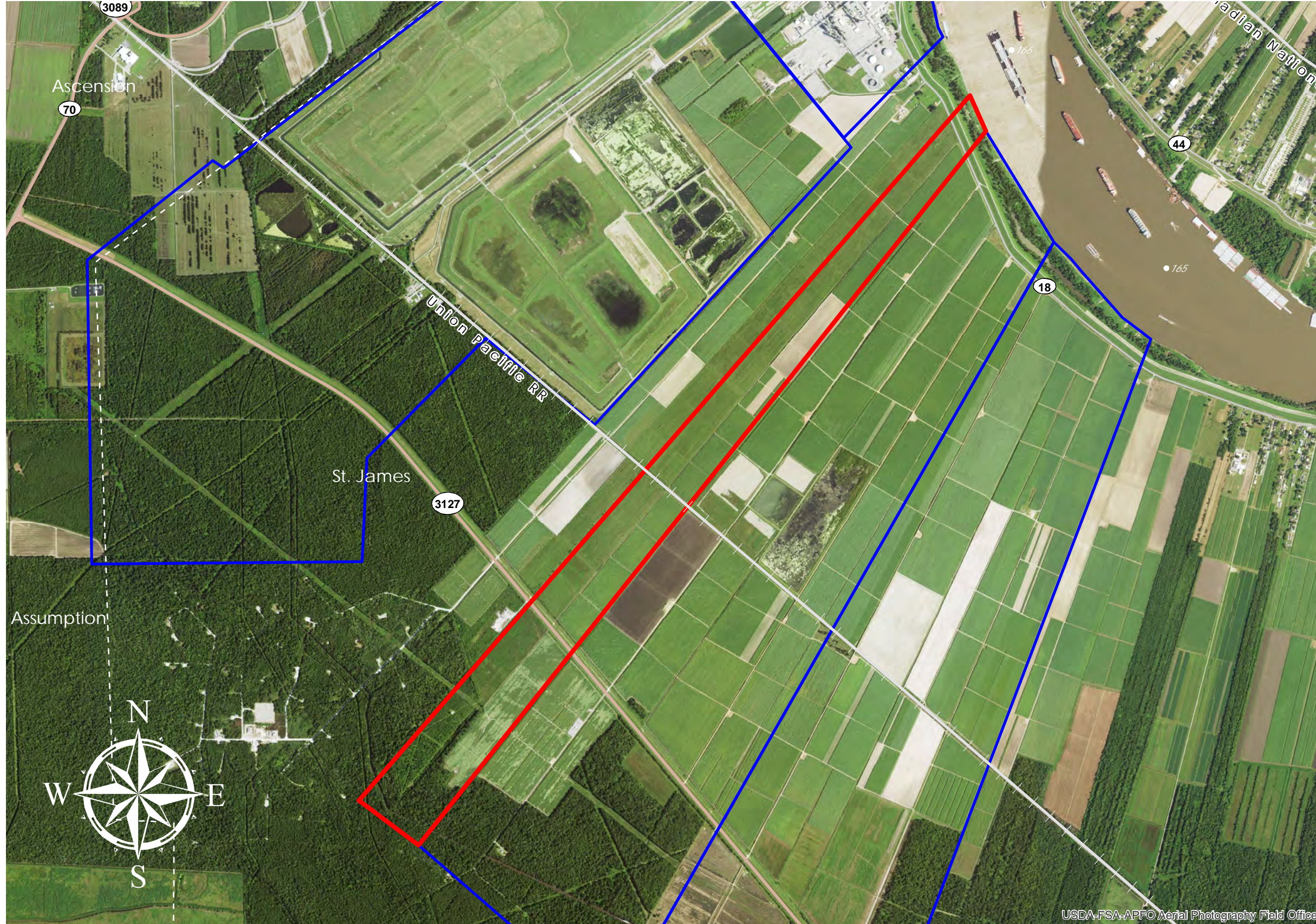


ELINA [LOWER] (#95)



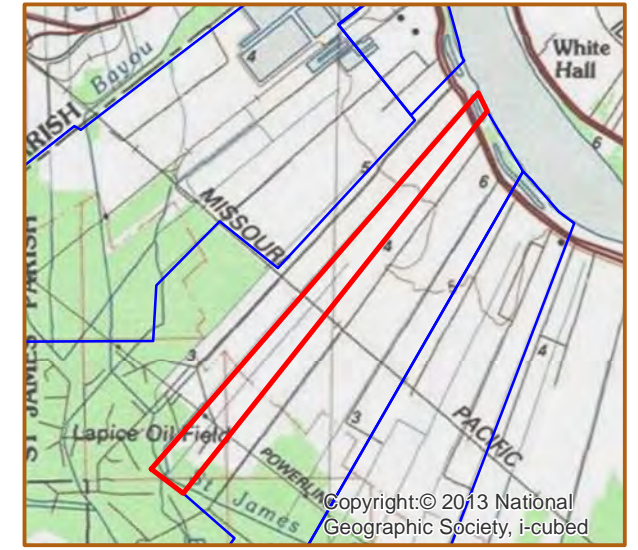
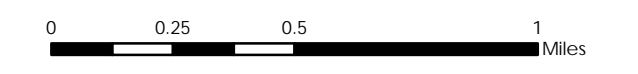
ELINA (LOWER)

+/- 470 Acres	190.2 Hectares
+/- 790' River Frontage	240.8m River Frontage
+/- 1,000' UP Rail Onsite	335.3m UP Rail Onsite

Resident Industry

■ Interstates ■ Railroads
 U.S. Highway — Railroads
 State Highway

Updated 2018-05-14



USDA-FSA-APFO Aerial Photography Field Office

Available Site Descriptions

PROPERTY NAME: ELINA (LOWER) Map #: 95

Mile Marker: W 165.9 Acreage: 470.00 Hectares: 190.20

GENERAL DETAILS

Site Draft: Deep Draft River Frontage (in ft.): 790.00 Rail Frontage (in ft.): 1,000.00

AGENT DETAILS

Agent: Steve Nosacka Company: St. James Parish Phone: 225-295-5631
E-Mail: steve_trinity@cox.net

TRANSPORTATION

Airport: Louis Armstrong International (59 miles); Baton Rouge Metropolitan (48 miles); PSL Executive Regional Airport (36 miles)

Rail: UP (Onsite - 1,000.00 ft)

Highway: I-10 (14 miles); US 61 (16 miles); LA 70 (2 miles); LA 3127 (Onsite); LA 18 (Onsite)

Zoning: Industrial Adjacent Land Use: Agricultural/Industrial

Access Road: Paved Parish: St. James

UTILITIES

Electricity: Entergy Water: St. James Parish Utilities

Natural Gas: Atmos Sewage: St. James Parish Utilities

Telecommunications: AT&T