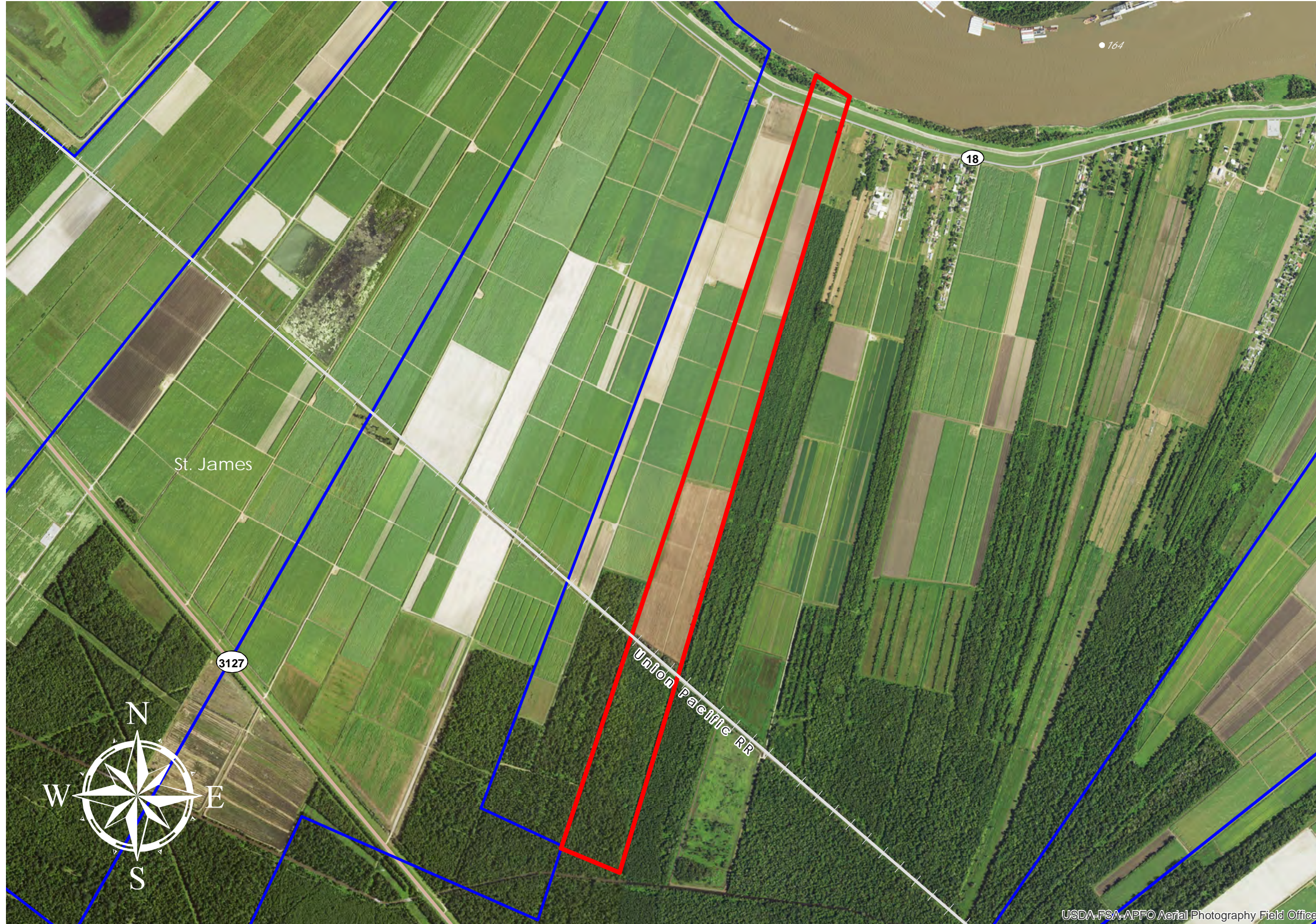


MINNIE & ST. LOUIS (#93)

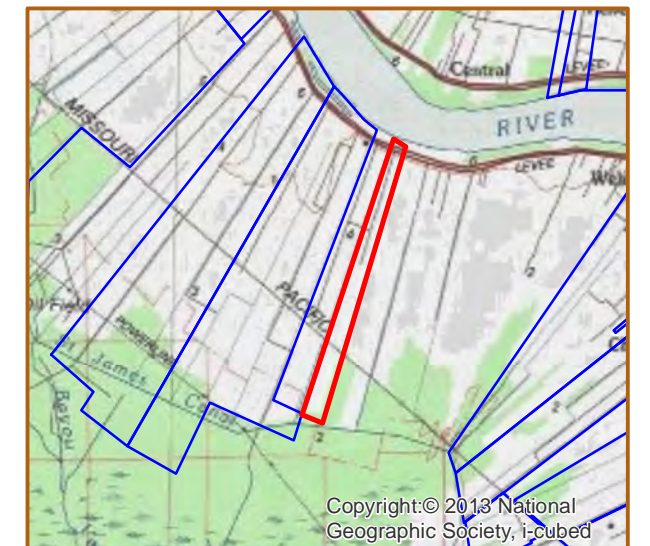
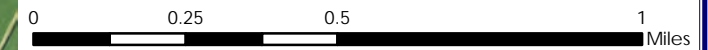


MINNIE & ST. LOUIS

+/- 235 Acres	95.1 Hectares
+/- 650' River Frontage	198.1m River Frontage
+/- 1,000' UP Rail Onsite	304.8m UP Rail Onsite

- Resident Industry
- Interstates
- U.S. Highway
- State Highway
- Railroads

Updated 2018-05-14



Available Site Descriptions

PROPERTY NAME: MINNIE & ST. LOUIS Map #: 93
Mile Marker: W 164.6 Acreage: 235.00 Hectares: 95.10

GENERAL DETAILS

Site Draft: Deep Draft River Frontage (in ft.): 650.00 Rail Frontage (in ft.): 1,000.00

AGENT DETAILS

Agent: Steve Nosacka Company: St. James Parish Phone: 225-295-5631
E-Mail: steve_trinity@cox.net

TRANSPORTATION

Airport: Louis Armstrong International (62 miles); Baton Rouge Metropolitan (48 miles); PSL Executive Regional Airport (40 miles)

Rail: UP (Onsite - 1,000.00 ft)

Highway: I-10 (14 miles); US 61 (16 miles); LA 70 (2 miles); LA 3127 (Onsite); LA 18 (Onsite)

Zoning: None Adjacent Land Use: Agricultural

Access Road: Paved Parish: St. James

UTILITIES

Electricity: Entergy Water: St. James Parish Utilities

Natural Gas: St. James Parish Utilities Sewage: St. James Parish Utilities

Telecommunications: AT&T