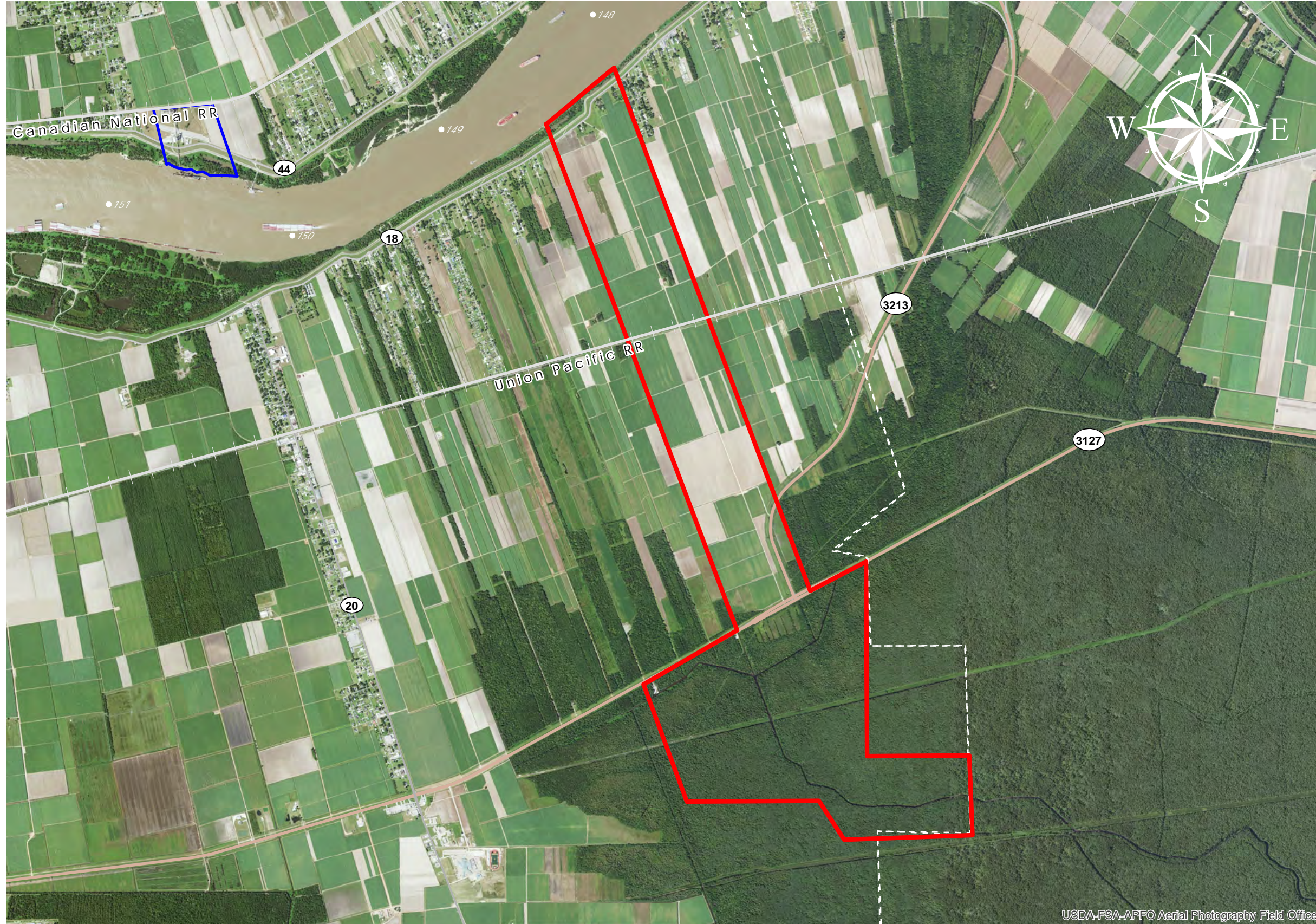


PSL ST. JAMES PROPERTY (#88)



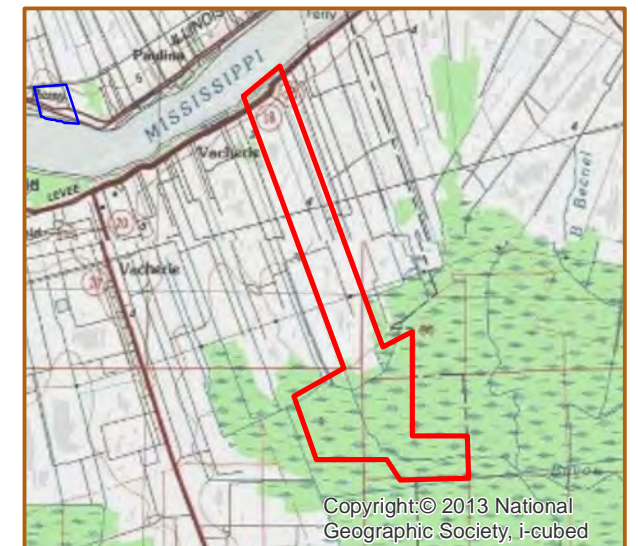
USDA-FSA-APFO Aerial Photography Field Office

PSL St. James Property

+/- 1,600 Acres	647.5 Hectares
+/- 2,400' River Frontage	731.5m River Frontage
+/- 2,300' UP Rail Onsite	701.0m UP Rail Onsite

- Resident Industry
- ▬ Interstates
- U.S. Highway
- State Highway
- + Railroads

Updated 2018-05-14



Copyright © 2013 National Geographic Society, i-cubed



Sources: Esri, HERE, DeLorme, USGS, Intermap, increment P Corp., NRCAN, Esri Japan, METI, Esri China (Hong Kong), Esri (Thailand),



Available Site Descriptions

PROPERTY NAME: **PSL ST. JAMES PROPERTY** Map #: **88**

Mile Marker: **W 147.9** Acreage: **1,600.00** Hectares: **647.50**

GENERAL DETAILS

Site Draft: **Deep Draft** River Frontage (in ft.): **2,400.00** Rail Frontage (in ft.): **2,300.00**

AGENT DETAILS

Agent: **Linda Prudhomme** Company: **Port of South Louisiana** Phone: **(985) 652-9278**

TRANSPORTATION

Airport: **Louis Armstrong International (41 miles); Baton Rouge Metropolitan (55 miles); PSL Executive Regional Airport (13 miles)**

Rail: **UP (Onsite - 2,300.00 ft)**

Highway: **I-10 (10 miles); US 61 (7 miles); LA 3127 (<1 mile); LA 18 (Borders)**

Zoning: **None** Adjacent Land Use: **Agricultural**

Access Road: **Paved** Parish: **St. James**

UTILITIES

Electricity: **Entergy** Water: **St. James Parish Utilities**

Natural Gas: **St. James Parish Utilities** Sewage: **St. James Parish Utilities**

Telecommunications: **AT&T**