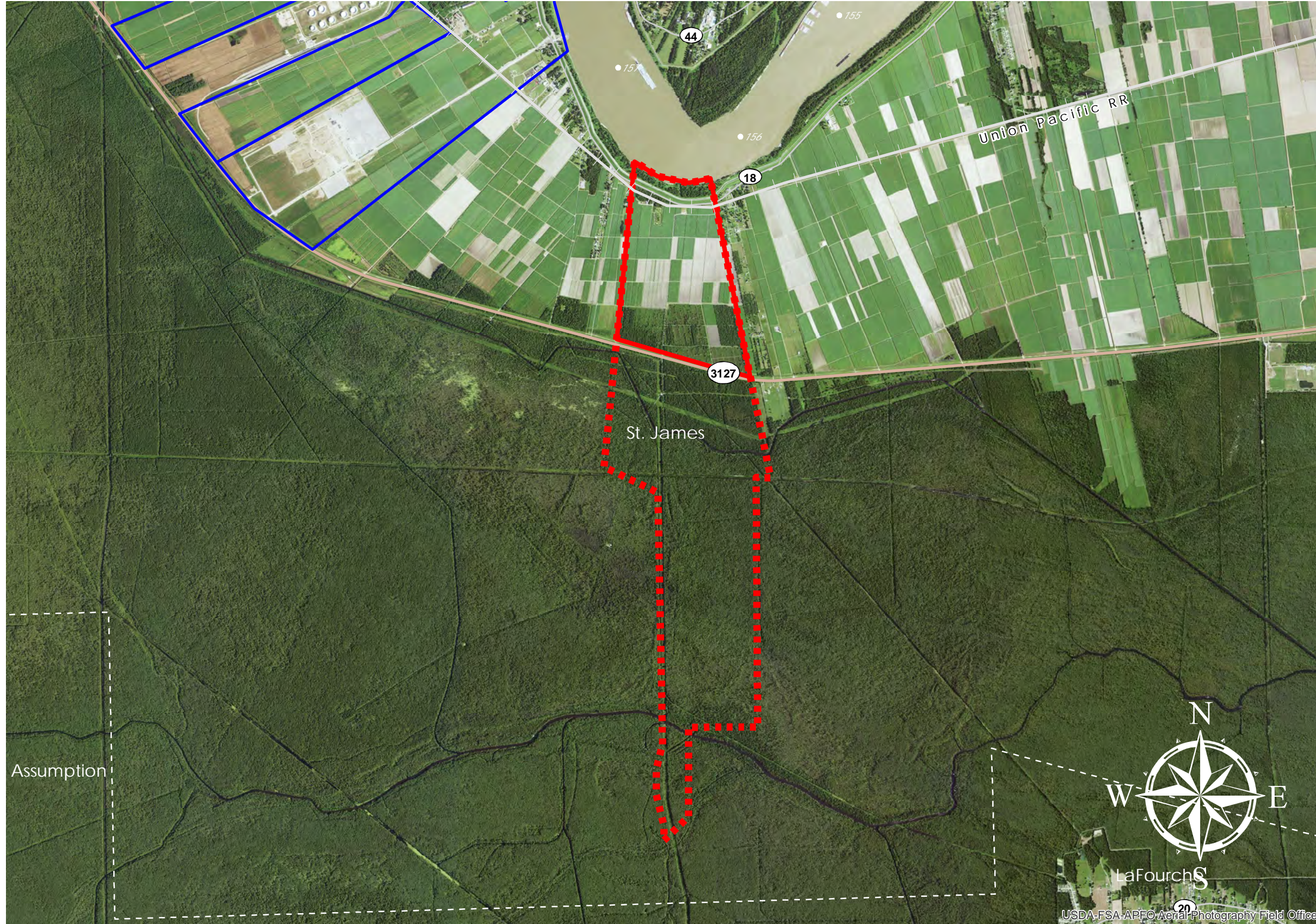


RICH BEND (#90)



RICH BEND

+/- 500 Acres	202.4 Hectares
+/- 1,300' River Frontage	396.2m River Frontage
+/- 3,000' UP Rail Onsite	914.4m UP Rail Onsite

Resident Industry

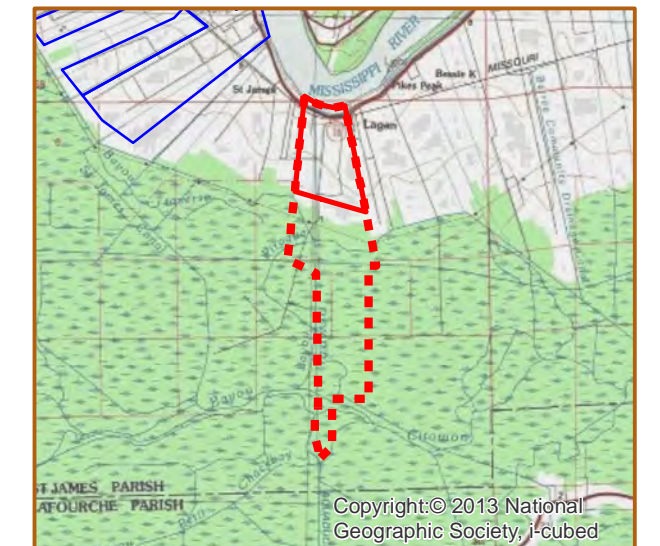
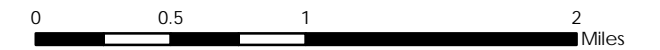
I Interstates

+ Railroads

 U.S. Highway

 State Highway

Updated 2018-05-14





Available Site Descriptions

PROPERTY NAME: **RICH BEND** Map #: **90**

Mile Marker: **W 156.3** Acreage: **500.00** Hectares: **202.35**

GENERAL DETAILS

Site Draft: **Deep Draft** River Frontage (in ft.): **1,300.00** Rail Frontage (in ft.): **3,000.00**

AGENT DETAILS

Agent: **Jeffrey Cromwell** Company: _____ Phone: **985-290-2737**

TRANSPORTATION

Airport: **Louis Armstrong International (37 miles); Baton Rouge Metropolitan (53 miles); PSL Executive Regional Airport (4 miles)**

Rail: **UP (Onsite - 3,000.00 ft)**

Highway: **I-10 (15 miles); US 61 (18 miles); LA 3127 (Borders); LA 44 (Borders)**

Zoning: **None** Adjacent Land Use: **Agricultural**

Access Road: **Paved** Parish: **St. James**

UTILITIES

Electricity: **Entergy** Water: **St. James Parish Utilities**

Natural Gas: **St. James Parish Utilities** Sewage: **St. James Parish Utilities**

Telecommunications: **AT&T**