

# SAVANNAH (#92)



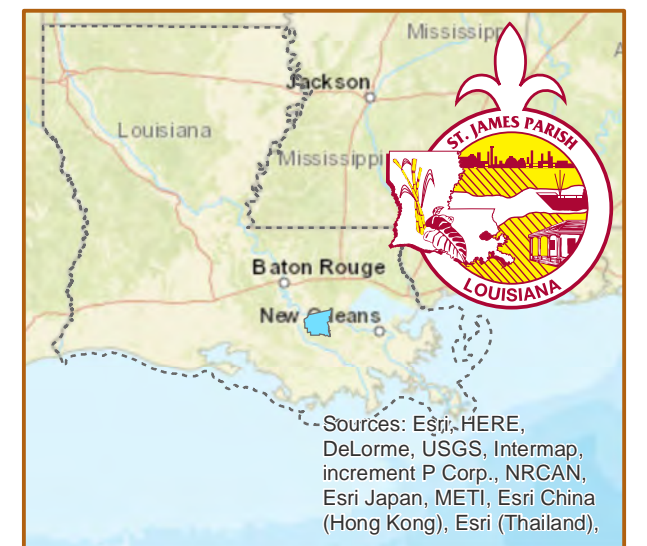
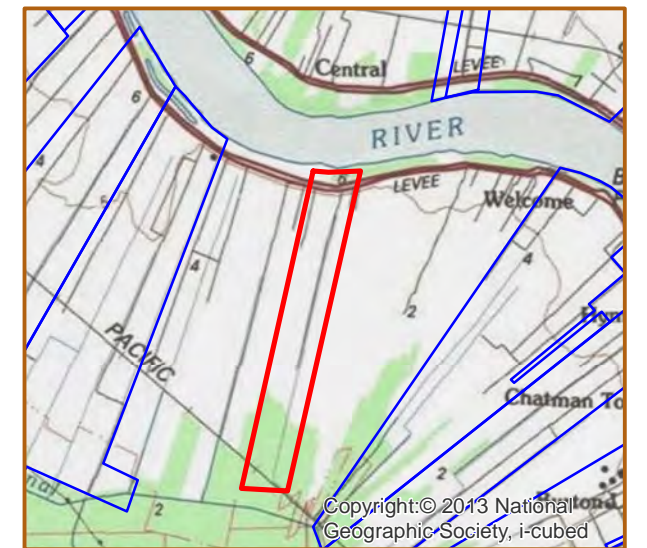
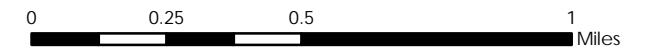
**SAVANNAH**

+/- 444 Acres      179.9 Hectares  
 +/- 1,954' River Frontage      595.6m River Frontage  
 +/- 1,900' Rail Frontage      579.1m Rail Frontage

**Resident Industry**

- Interstates
- U.S. Highway
- State Highway
- Railroads

Updated 2018-05-14



USDA-FSA-APFO Aerial Photography Field Office

## Available Site Descriptions

PROPERTY NAME: SAVANNAH Map #: 92  
 Mile Marker: W 164.2 Acreage: 444.46 Hectares: 179.87

### GENERAL DETAILS

Site Draft: Deep Draft River Frontage (in ft.): 1,954.00 Rail Frontage (in ft.): 1,900.00

### AGENT DETAILS

Agent: Steve Nosacka Company: St. James Parish Phone: 225-295-5631  
 E-Mail: [steve\\_trinity@cox.net](mailto:steve_trinity@cox.net)

### TRANSPORTATION

Airport: Louis Armstrong International (63 miles); Baton Rouge Metropolitan (49 miles);  
 PSL Executive Regional Airport (41 miles)

Rail: UP (Onsite - 1,900.00 ft)

Highway: I-10 (15 miles); US 61 (17 miles); LA 70 (5 miles); LA 3127 (4 miles); LA 18 (Onsite)

Zoning: None Adjacent Land Use: Agricultural

Access Road: Paved Parish: St. James

### UTILITIES

Electricity: Entergy Water: St. James Parish Utilities

Natural Gas: St. James Parish Utilities Sewage: St. James Parish Utilities

Telecommunications: AT&T