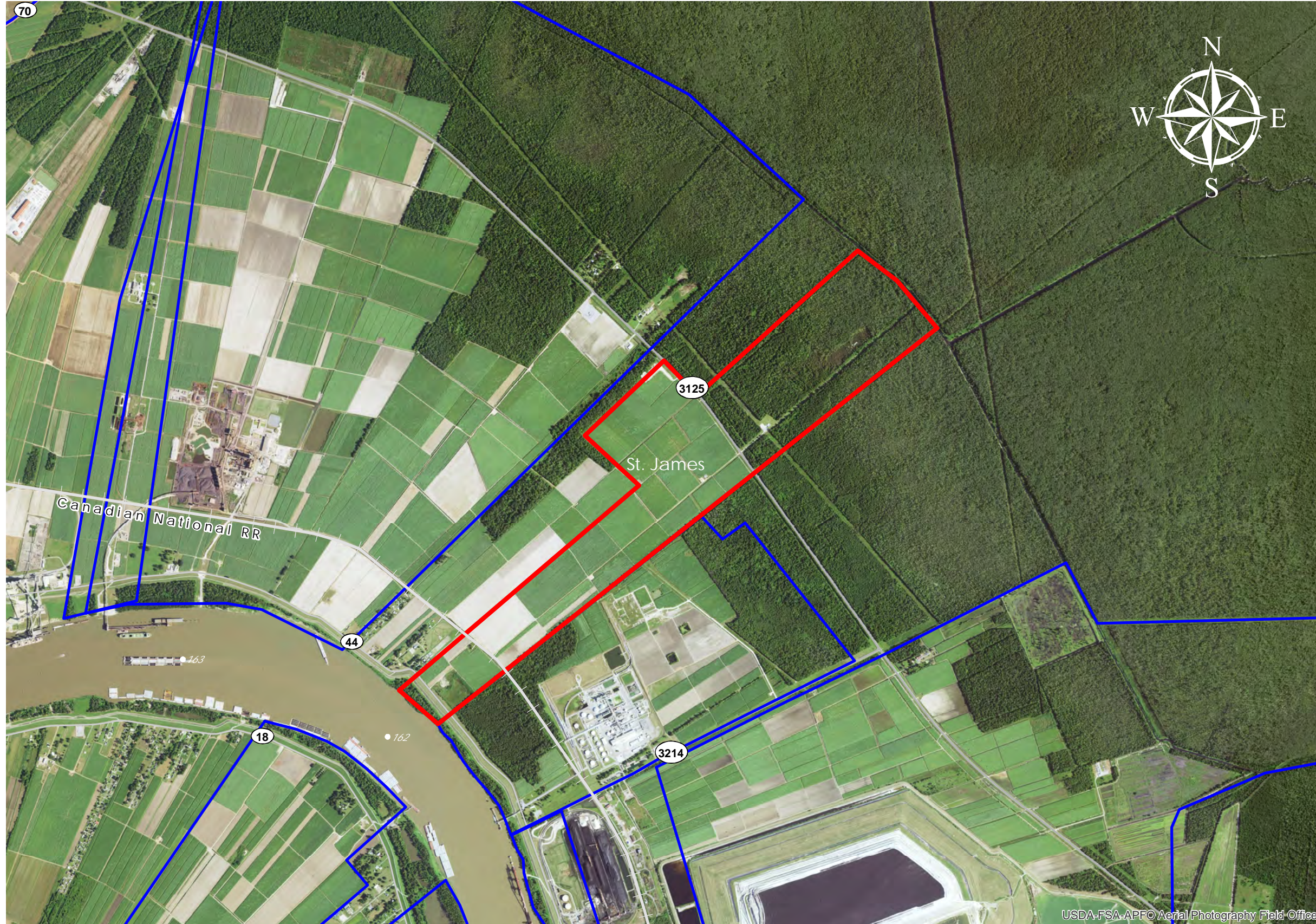


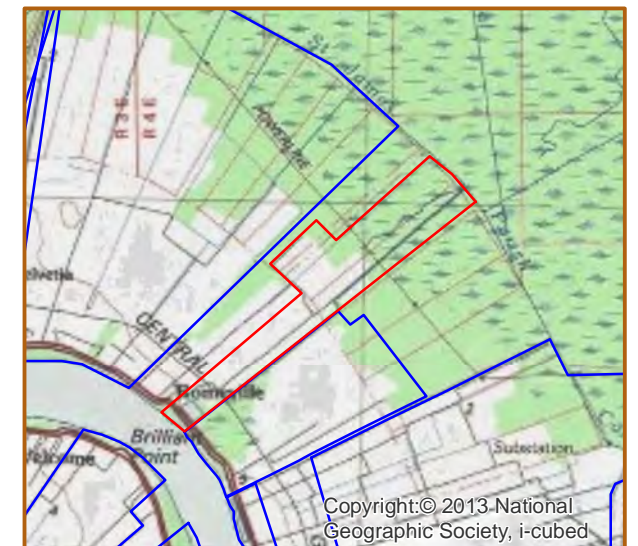
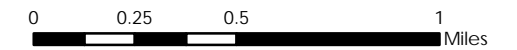
SHADY GROVE (#71)



SHADY GROVE
 +/- 517 Acres *209.2 Hectares*
 +/- 1,690' River Frontage *515.1m River Frontage*
 +/- 1,690' CN Rail Onsite *515.1m CN Rail Onsite*

- Resident Industry
- Interstates
- U.S. Highway
- State Highway
- Railroads

Updated 2018-05-14



USDA-FSA-APFO Aerial Photography Field Office

Available Site Descriptions

PROPERTY NAME: SHADY GROVE Map #: 71

Mile Marker: E 161.6 Acreage: 517.00 Hectares: 209.22

GENERAL DETAILS

Site Draft: Deep Draft River Frontage (in ft.): 1,690.00 Rail Frontage (in ft.): 1,690.00

AGENT DETAILS

Agent: Steve Nosacka Company: St. James Parish Phone: 225-295-5631
E-Mail: steve_trinity@cox.net

TRANSPORTATION

Airport: Louis Armstrong International (54 miles); Baton Rouge Metropolitan (44 miles); PSL Executive Regional Airport (32 miles)

Rail: CN (Onsite - 1,690.00 ft)

Highway: I-10 (9 miles); US 61 (11 miles); LA 70 (8 miles); LA 3125 (Onsite); LA 44 (Onsite)

Zoning: None Adjacent Land Use: Agricultural

Access Road: Paved Parish: St. James

UTILITIES

Electricity: Entergy Water: St. James Parish Utilities

Natural Gas: St. James Parish Utilities Sewage: St. James Parish Utilities

Telecommunications: AT&T