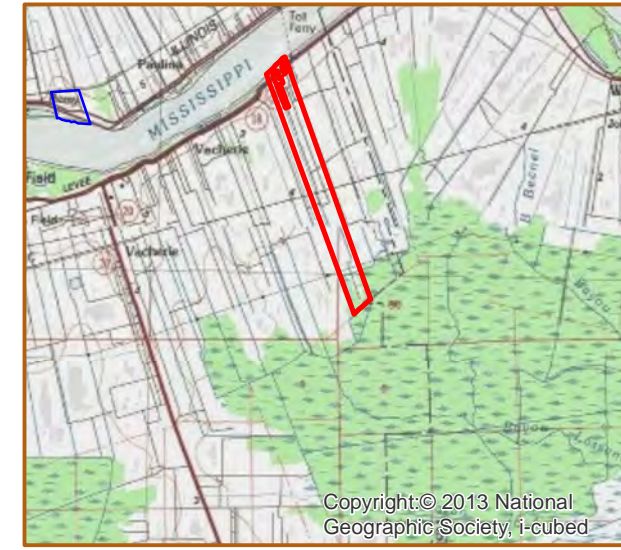
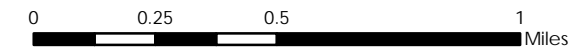


SUCCEED
 +/- 450 Acres 182.1 Hectares
 +/- 1,530' River Frontage 466.3m River Frontage
 +/- 1,325' UP Rail Onsite 405.0m UP Rail Onsite

Resident Industry

Interstates Railroads
 U.S. Highway
 State Highway

Updated 2018-05-14



Available Site Descriptions

<p>PROPERTY NAME: <u>SUCCEED</u> Map #: <u>87</u></p> <p>Mile Marker: <u>W 147.9</u> Acreage: <u>450.00</u> Hectares: <u>182.11</u></p>
<p>GENERAL DETAILS</p> <p>Site Draft: <u>Deep Draft</u> River Frontage (in ft.): <u>1,530.00</u> Rail Frontage (in ft.): <u>1,325.00</u></p>
<p>AGENT DETAILS</p> <p>Agent(s): <u>Donald Becnel</u> Company: _____ Phone: <u>(225) 265-3330</u> <u>Michael Waguespack</u> _____ <u>(985) 665-2556</u></p>
<p>TRANSPORTATION</p> <p>Airport: <u>Louis Armstrong International (41 miles); Baton Rouge Metropolitan (55 miles); PSL Executive Regional Airport (13 miles)</u></p> <p>Rail: <u>UP (Onsite - 1,325.00 ft)</u></p> <p>Highway: <u>I-10 (10 miles); US 61 (7 miles); LA 3127 (<1 mile); LA 18 (Borders)</u></p>
<p>Zoning: <u>None</u> Adjacent Land Use: <u>Agricultural</u></p> <p>Access Road: <u>Paved</u> Parish: <u>St. James</u></p>
<p>UTILITIES</p> <p>Electricity: <u>Entergy</u> Water: <u>St. James Parish Utilities</u></p> <p>Natural Gas: <u>St. James Parish Utilities</u> Sewage: <u>St. James Parish Utilities</u></p> <p>Telecommunications: <u>AT&T</u></p>