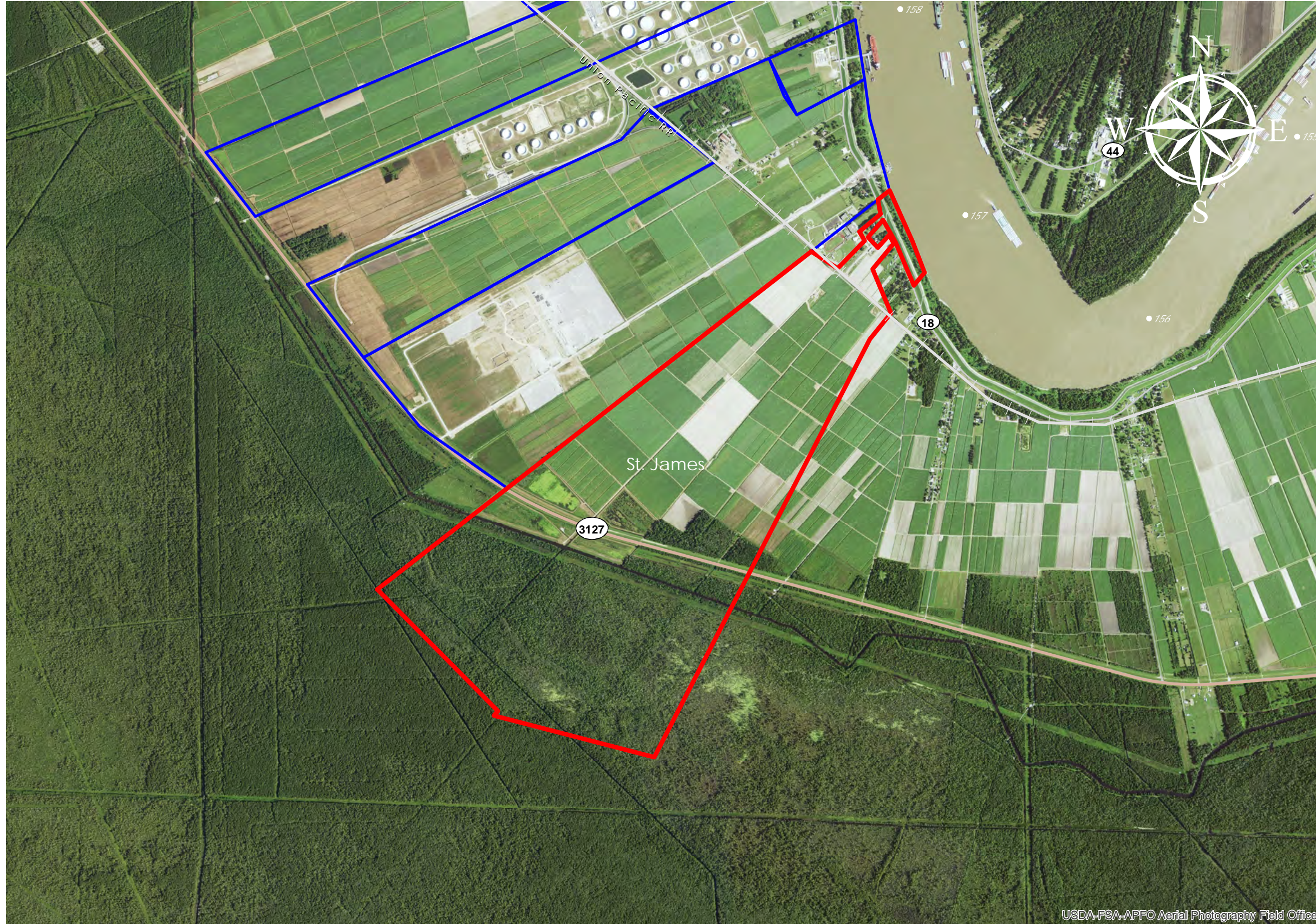


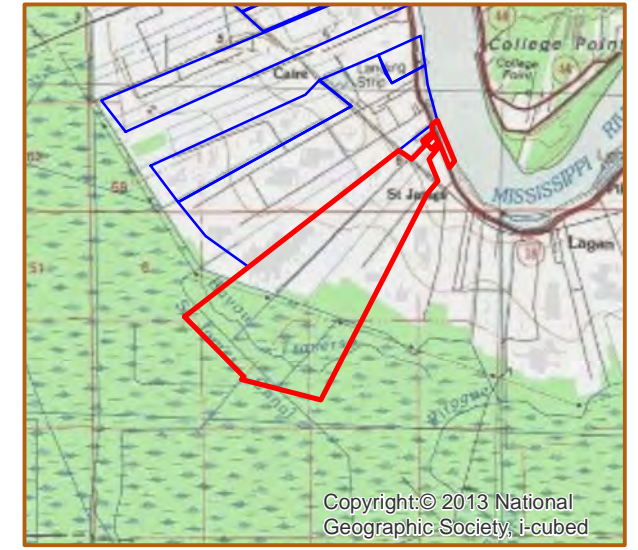
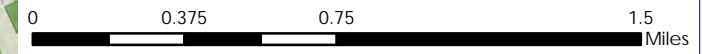
# ZERINGUE / ST. EMMA (#91)



**ZERINGUE / ST. EMMA**  
 +/- 1,464 Acres      592.5 Hectares  
 +/- 2,254' River Frontage      687.0m River Frontage  
 +/- 3,083' UP Rail Onsite      939.7m UP Rail Onsite

- Resident Industry
- Interstates
- U.S. Highway
- State Highway
- Railroads

Updated 2018-05-14



USDA-FSA-APFO Aerial Photography Field Office

## Available Site Descriptions

PROPERTY NAME: ZERINGUE / ST. EMMA Map #: 91  
 Mile Marker: W 157 Acreage: 1,464.00 Hectares: 592.47

### GENERAL DETAILS

Site Draft: Deep Draft River Frontage (in ft.): 2,254.00 Rail Frontage (in ft.): 3,083.00

### AGENT DETAILS

Agent: Steve Nosacka Company: St. James Parish Phone: 225-295-5631  
 E-Mail: [steve\\_trinity@cox.net](mailto:steve_trinity@cox.net)

### TRANSPORTATION

Airport: Louis Armstrong International (55 miles); Baton Rouge Metropolitan (55 miles);  
 PSL Executive Regional Airport (26 miles)

Rail: UP (Onsite - 3,083.00 ft)

Highway: I-10 (15 miles); US 61 (18 miles); LA 70 (10 miles); LA 3127 (Onsite); LA 18 (Onsite)

Zoning: None Adjacent Land Use: Agricultural

Access Road: Paved Parish: St. James

### UTILITIES

Electricity: Entergy Water: St. James Parish Utilities

Natural Gas: St. James Parish Utilities Sewage: St. James Parish Utilities

Telecommunications: AT&T