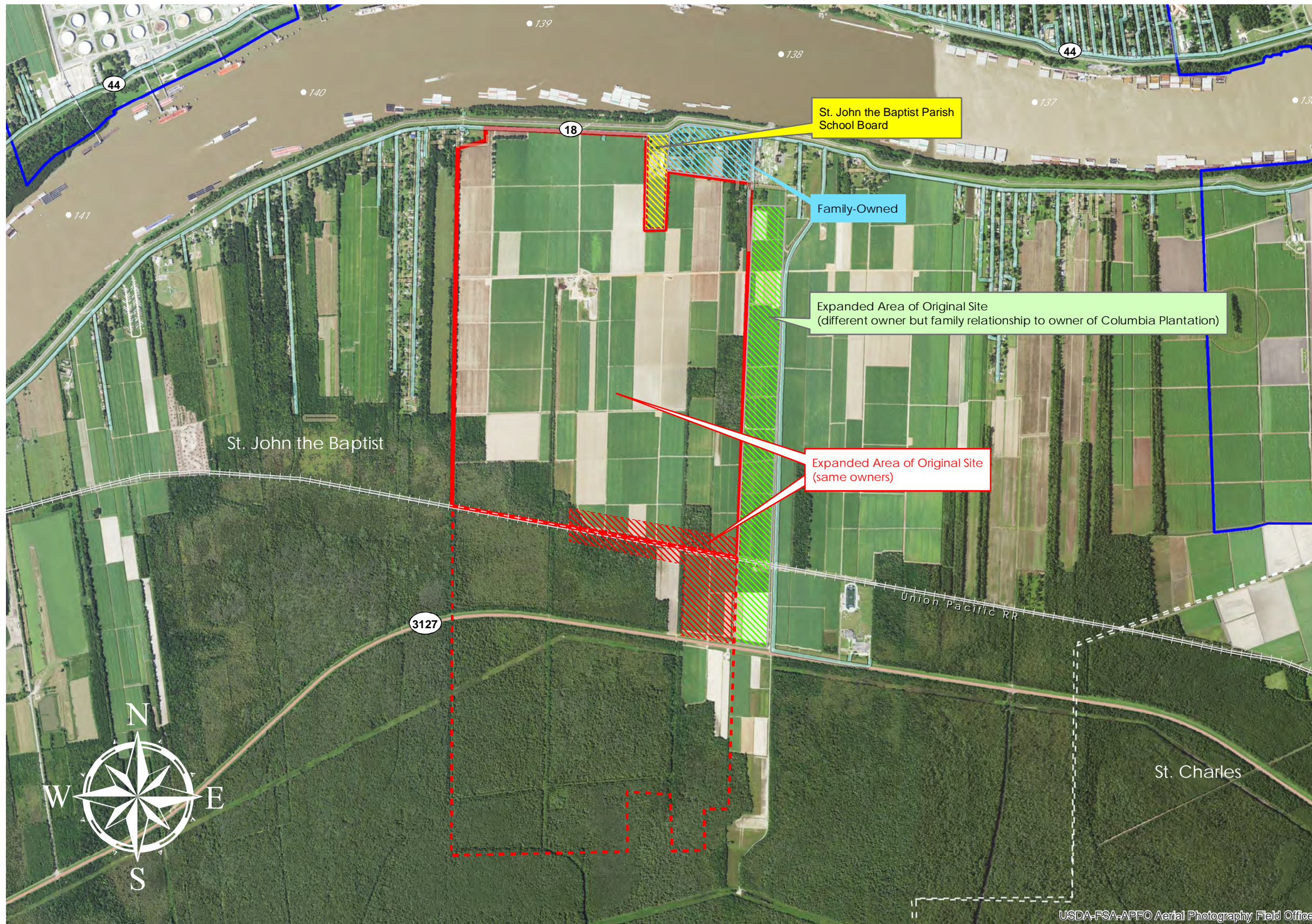


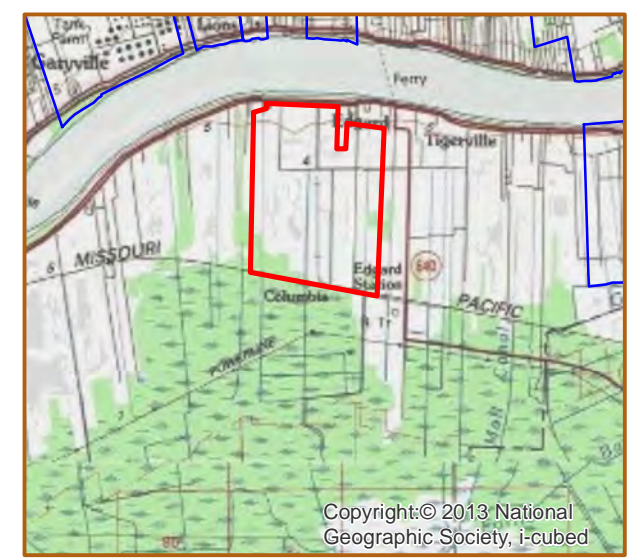
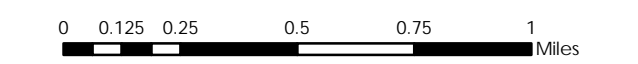
# COLUMBIA (#83)



**COLUMBIA**  
 +/- 900 Acres      364.2 Hectares  
 +/- 3,300' River Frontage      1,005.8m River Frontage  
 +/- 4,800' UP Rail Onsite      1,463.1m UP Rail Onsite

Resident Industry  
 Interstates       Railroads  
 U.S. Highway       Waterline  
 State Highway       Wastewater

Updated 2018-05-14





## Available Site Descriptions

PROPERTY NAME: COLUMBIA Map #: 83

Mile Marker: W 138.8 Acreage: 900.00 Hectares: 364.22

### GENERAL DETAILS

Site Draft: Deep Draft River Frontage (in ft.): 3,300.00 Rail Frontage (in ft.): 4,800.00

### AGENT DETAILS

Agent: Jerry Jones Company: St. John Parish Dept of ED Phone: 985-652-9569

### TRANSPORTATION

Airport: Louis Armstrong International (26 miles); Baton Rouge Metropolitan (62 miles);  
PSL Executive Regional Airport (18 miles)

Rail: UP (Onsite - 4,800 ft)

Highway: I-10 (15 miles); US 61 (12 miles); LA 641 (12 miles); LA 640 (0.3 miles);  
LA 3127 (Onsite); LA 18 (Onsite)

Zoning: Industrial Adjacent Land Use: Agricultural

Access Road: Paved Parish: St. John the Baptist

### UTILITIES

Electricity: Entergy Water: St. John the Baptist Parish Utilities

Natural Gas: Atmos Sewage: St. John the Baptist Parish Utilities

Telecommunications: AT&T