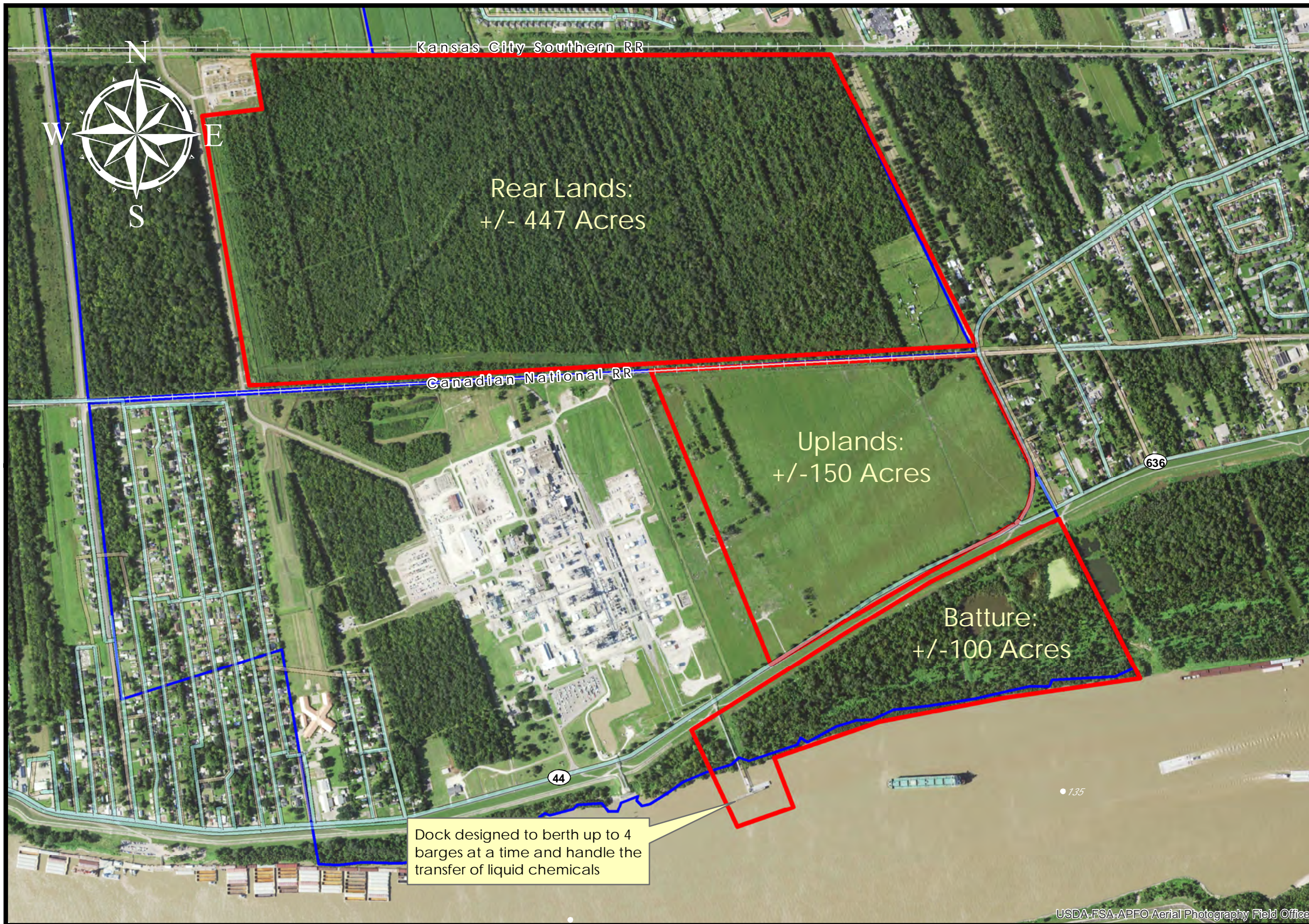
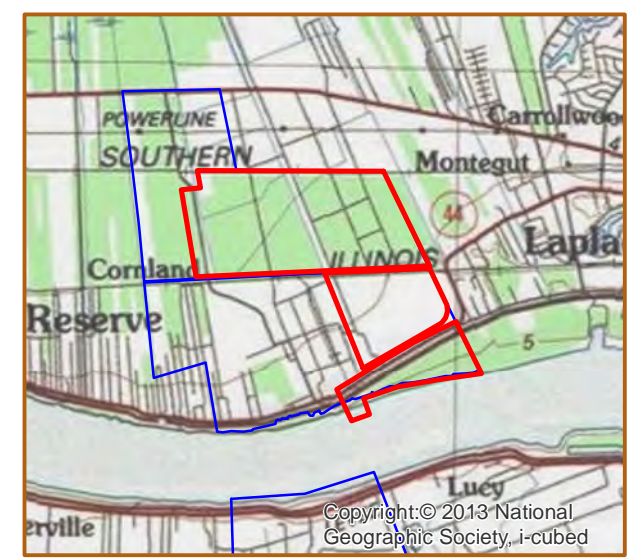
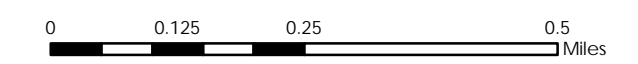


DUPONT SITE(S) (#76)



 DuPont Site	 Resident Industry
<i>Rear Lands</i> +/- 447 Acres +/- 5,500' KCS Rail Onsite +/- 7,000' CN Rail Onsite	 Interstates
<i>Uplands</i> +/- 150 Acres +/- 3,000' CN Rail Onsite	 U.S. Highway
<i>Batture</i> +/- 100 Acres +/- 4,400' River Frontage	 State Highway
	 Railroads
	 Waterline
	 Wastewater

Updated 2018-05-14



Available Site Descriptions

PROPERTY NAME: DUPONT SITE(S) Map #: 76

Mile Marker: <u>E 135.5</u>	Acreage: <u>697.00</u>	Hectares: <u>282.07</u>
	<i>Rear Lands:</i> <u>447.00</u>	<u>180.90</u>
	<i>Uplands:</i> <u>150.00</u>	<u>60.70</u>
	<i>Batture:</i> <u>100.00</u>	<u>40.47</u>

GENERAL DETAILS

Site Draft: Deep Draft River Frontage (in ft.): 4,400.00 Rail Frontage (in ft.): 10,000.00

AGENT DETAILS

Agent: Linda Prudhomme Company: Port of South Louisiana Phone: 985-652-9278

TRANSPORTATION

Airport: Louis Armstrong International (18 miles); Baton Rouge Metropolitan (62 miles); PSL Executive Regional Airport (6 miles)

Rail: CN (Onsite - 7,000 ft); KCS (Onsite - 5,500 ft)

Highway: I-10 (4 miles); I-55 (5.5 miles); US 61 (2 miles); LA 641 (12 miles); LA 44 (Onsite)

Zoning: Industrial Adjacent Land Use: Agricultural

Access Road: Paved Parish: St. John the Baptist

UTILITIES

Electricity: Entergy Water: St. John the Baptist Parish Utilities

Natural Gas: Atmos Sewage: St. John the Baptist Parish Utilities

Telecommunications: AT&T