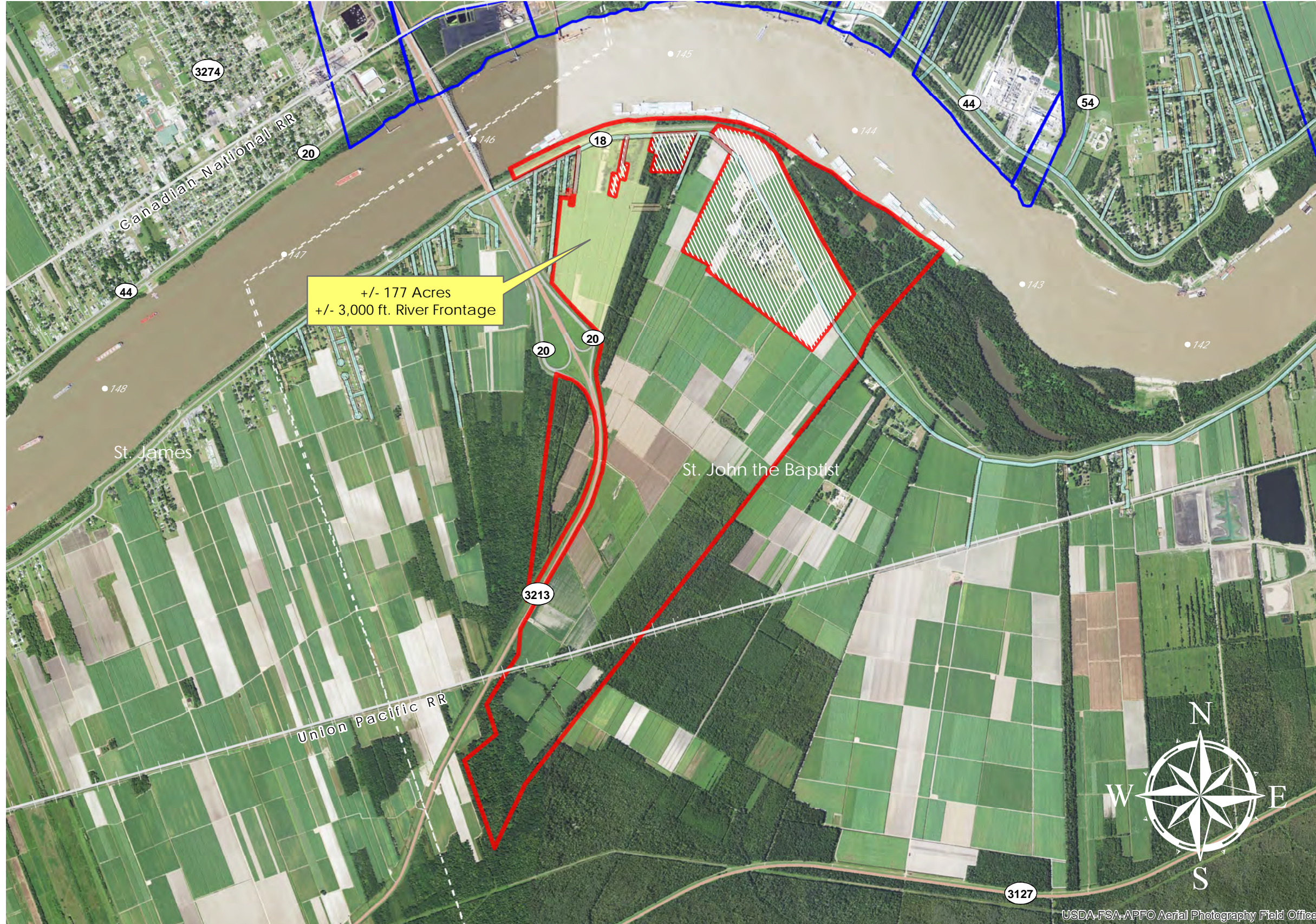


# ROBERT BROTHERS FARM (#85)



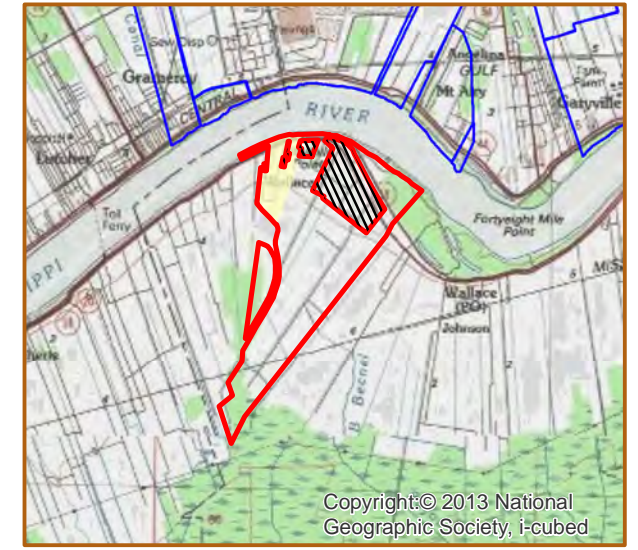
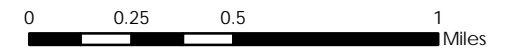
**ROBERT BROTHERS FARM**

+/- 1,582 Acres	640.2 Hectares
+/- 8,448' River Frontage	2,574.9m River Frontage
+/- 3,250' UP Rail Onsite	990.6m UP Rail Onsite

**Resident Industry**

Interstates	Railroads
U.S. Highway	Waterline
State Highway	Wastewater

Updated 2018-05-14



## Available Site Descriptions

PROPERTY NAME: Robert Brothers Farm Map #: 85

Mile Marker: W 144.1 Acreage: 1,582.00 Hectares: 640.22

### GENERAL DETAILS

Site Draft: Deep Draft River Frontage (in ft.): 8,448.00 Rail Frontage (in ft.): 3,250.00

### AGENT DETAILS

Agent: Jerry Jones Company: St. John Parish Dept of ED Phone: 985-652-9569

### TRANSPORTATION

Airport: Louis Armstrong International (42 miles); Baton Rouge Metropolitan (54 miles);  
PSL Executive Regional Airport (12 miles)

Rail: UP (Onsite - 3,250 ft)

Highway: I-10 (6 miles); US 61 (3 miles); LA 641 (2 miles); LA 3127 (0.5 miles); LA 18 (Onsite)

Zoning: Industrial Adjacent Land Use: Agricultural

Access Road: Paved Parish: St. John the Baptist

### UTILITIES

Electricity: Entergy Water: St. John the Baptist Parish Utilities

Natural Gas: Atmos Sewage: St. John the Baptist Parish Utilities

Telecommunications: AT&T