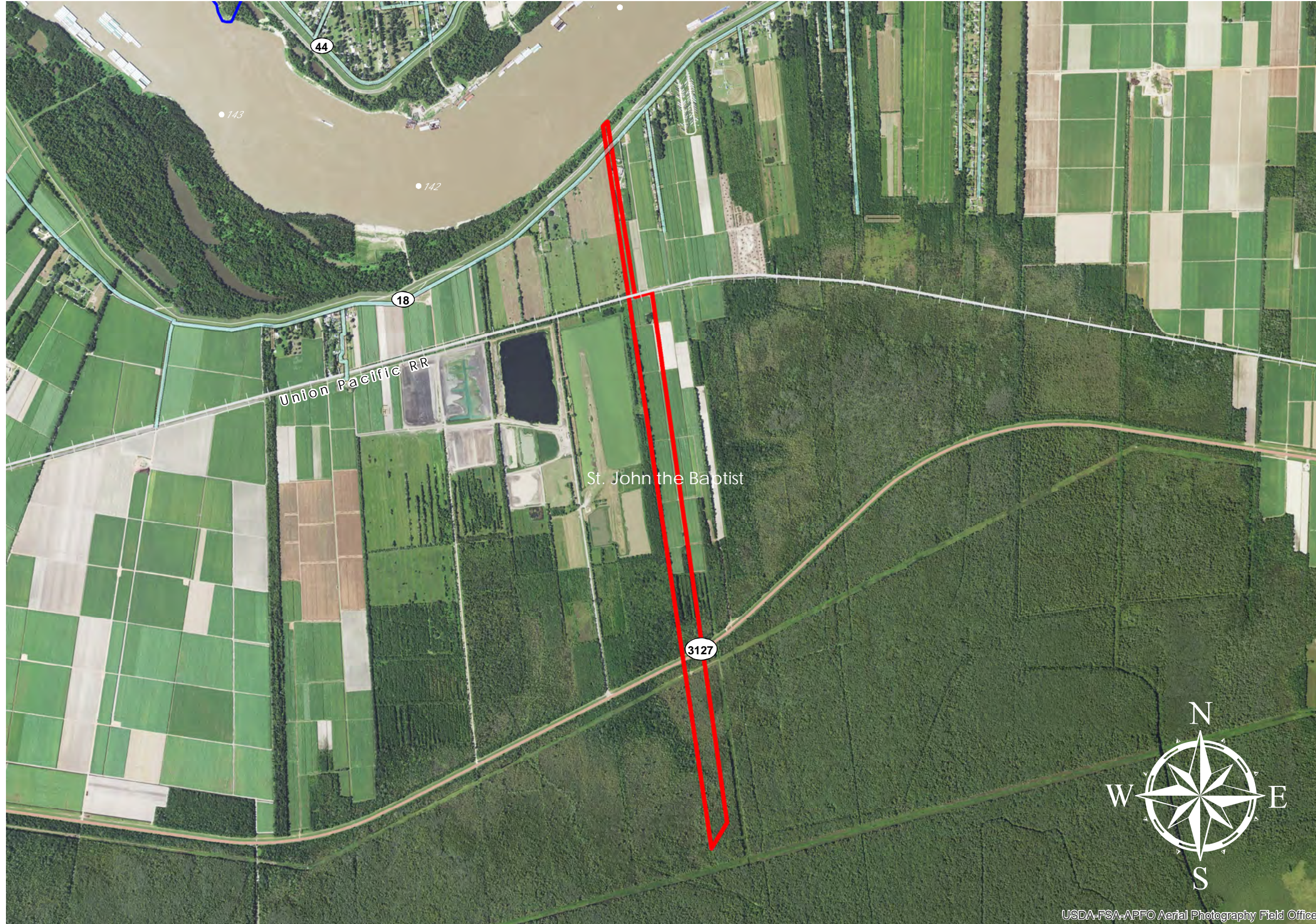


WHITEROSE (#84)

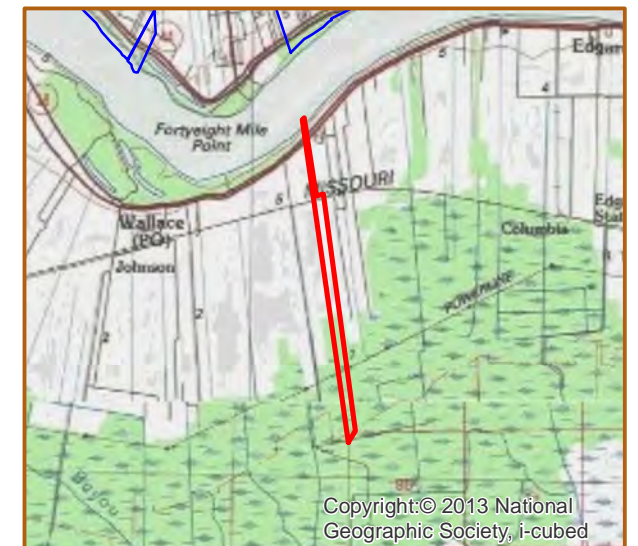
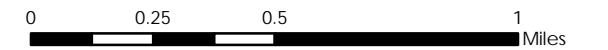


USDA-FSA-APFO Aerial Photography Field Office

WHITEROSE
 +/- 300 Acres *121.4 Hectares*
 +/- 854' River Frontage *260.3m River Frontage*
 +/- 600' UP Rail Onsite *182.9m UP Rail Onsite*

- Resident Industry
- Interstates
- U.S. Highway
- State Highway
- Railroads
- Waterline
- Wastewater

Updated 2018-05-14



Available Site Descriptions

PROPERTY NAME: WHITEROSE Map #: 84

Mile Marker: W 141.1 Acreage: 300.00 Hectares: 121.40

GENERAL DETAILS

Site Draft: Deep Draft River Frontage (in ft.): 854.00 Rail Frontage (in ft.): 600.00

AGENT DETAILS

Agent: Jerry Jones Company: St. John Parish Dept of ED Phone: 985-652-9569

TRANSPORTATION

Airport: Louis Armstrong International (48 miles); Baton Rouge Metropolitan (60 miles);
PSL Executive Regional Airport (18 miles)

Rail: UP (600 ft)

Highway: I-10 (14 miles); US 61 (11 miles); LA 641 (10 miles); LA 3127 (Onsite); LA 18 (Onsite)

Zoning: Industrial Adjacent Land Use: Agricultural

Access Road: Paved Parish: St. John the Baptist

UTILITIES

Electricity: Entergy Water: St. John the Baptist Parish Utilities

Natural Gas: Atmos Sewage: St. John the Baptist Parish Utilities

Telecommunications: AT&T