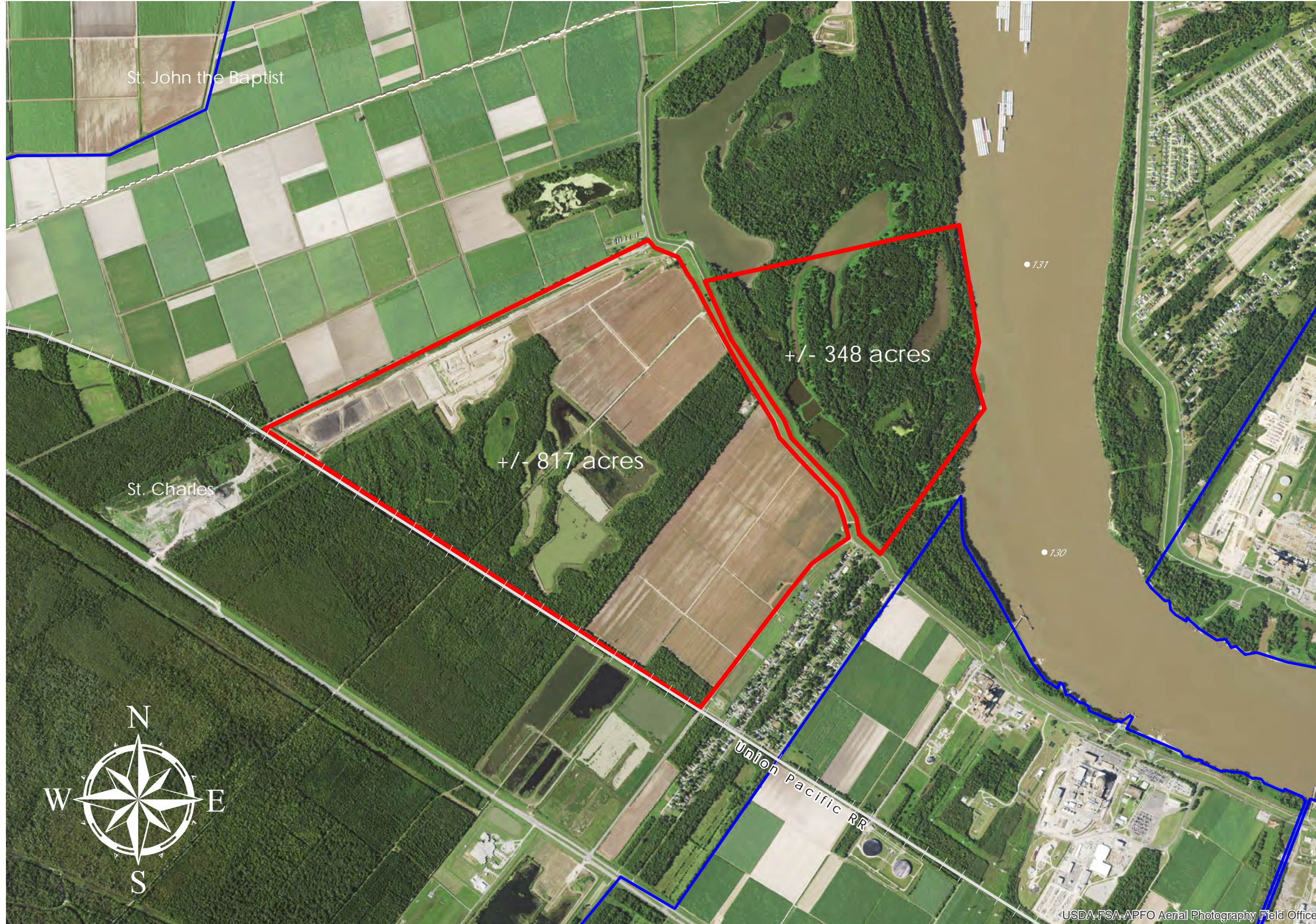


# ST. CHARLES INTERMODAL TERMINAL (#81)



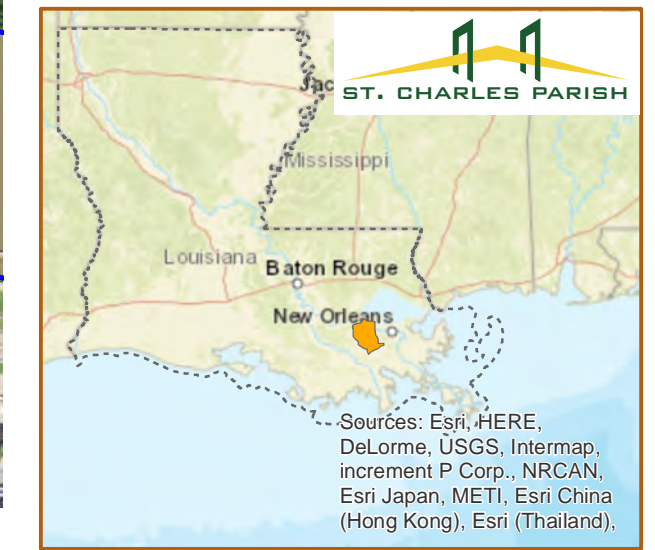
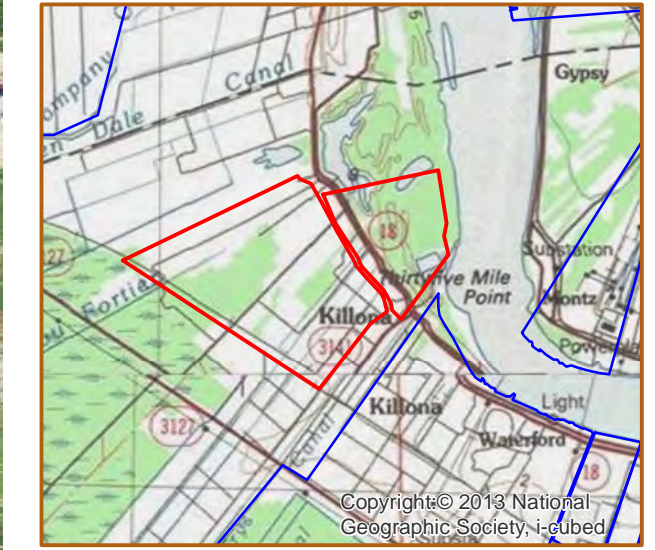
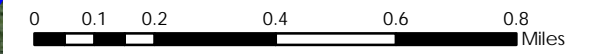
**ST. CHARLES RIVERPARK**

+/- 1,165 Acres	471.5 Hectares
+/- 3,601' River Frontage	1,097.6m River Frontage
+/- 8,350' UP Rail Onsite	2,545.0m UP Rail Onsite

**Resident Industry**

■ Interstates      + Railroads  
  U.S. Highway        State Highway

Updated 2018-05-14





## Available Site Descriptions

PROPERTY NAME: **ST. CHARLES INTERMODAL TERMINAL** Map #: **81**

Mile Marker: **W 131** Acreage: **1,165.00** Hectares: **471.46**

### GENERAL DETAILS

Site Draft: **Deep Draft** River Frontage (*in ft.*): **3,601.00** Rail Frontage (*in ft.*): **8,350.00**

### AGENT DETAILS

Agent: **Corey Fauchaux** Company: **St. Charles Parish Dept of ED** Phone: **(985) 783-5140**

### TRANSPORTATION

Airport: **Louis Armstrong International (21 miles); PSL Executive Regional Airport (33 miles)**

Rail: **UP (Borders - 8,350 ft)**

Highway: **I-10 (19 miles); I-310 (8 miles); US 90 (9 miles); US 61 (15 miles); LA 3127 (0.5 miles); LA 18 (Onsite)**

Zoning: **Light to Heavy Industrial** Adjacent Land Use: **Agricultural**

Access Road: **Paved** Parish: **St. Charles**

### UTILITIES

Electricity: **Entergy** Water: **St. Charles Parish Utilities**

Natural Gas: **Atmos** Sewage: **St. Charles Parish Utilities**

Telecommunications: **AT&T and Cox Communications**