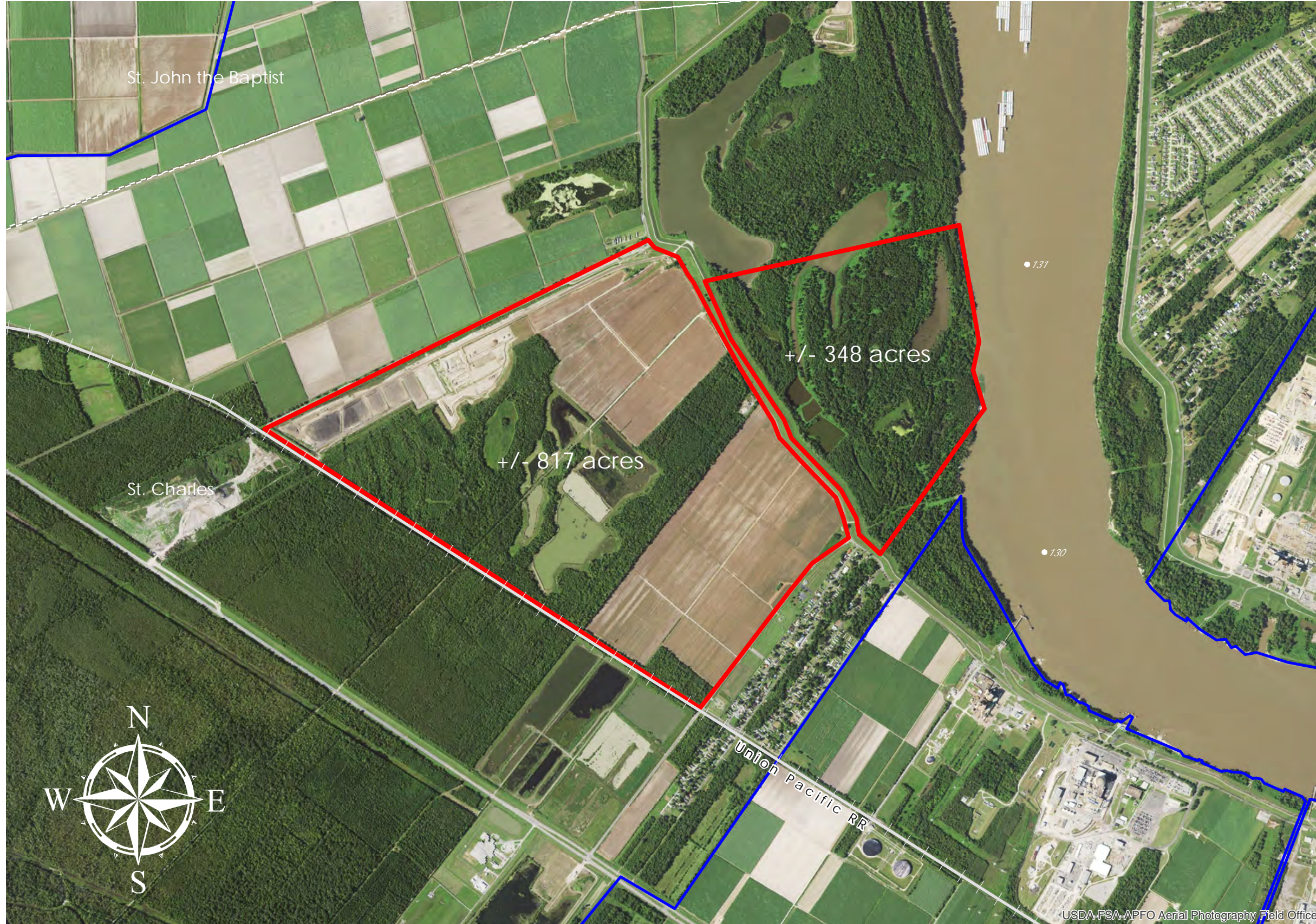


ST. CHARLES INTERMODAL TERMINAL (#81)



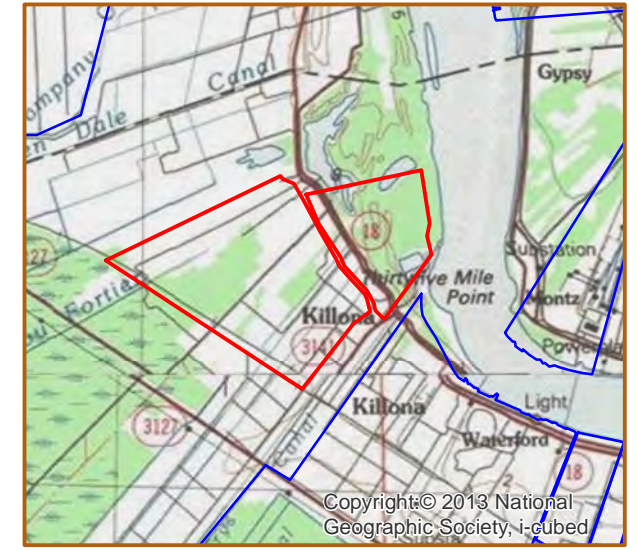
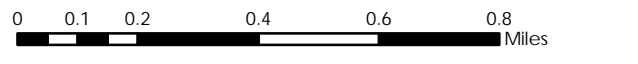
ST. CHARLES RIVERPARK

+/- 1,165 Acres	471.5 Hectares
+/- 3,601' River Frontage	1,097.6m River Frontage
+/- 8,350' UP Rail Onsite	2,545.0m UP Rail Onsite

Resident Industry

■ Interstates + Railroads
 U.S. Highway State Highway

Updated 2021-01-08



Available Site Descriptions

PROPERTY NAME: ST. CHARLES INTERMODAL TERMINAL Map #: 81

Mile Marker: W 131 Acreage: 1,165.00 Hectares: 471.46

GENERAL DETAILS

Site Draft: Deep Draft River Frontage (*in ft.*): 3,601.00 Rail Frontage (*in ft.*): 8,350.00

AGENT DETAILS

Agent: Corey Fauchaux Company: St. Charles Parish Dept of ED Phone: (985) 783-5140

TRANSPORTATION

Airport: Louis Armstrong International (21 miles); PSL Executive Regional Airport (33 miles)

Rail: UP (Borders - 8,350 ft)

Highway: I-10 (19 miles); I-310 (8 miles); US 90 (9 miles); US 61 (15 miles); LA 3127 (0.5 miles); LA 18 (Onsite)

Zoning: Light to Heavy Industrial Adjacent Land Use: Agricultural

Access Road: Paved Parish: St. Charles

UTILITIES

Electricity: Entergy Water: St. Charles Parish Utilities

Natural Gas: Atmos Sewage: St. Charles Parish Utilities

Telecommunications: AT&T and Cox Communications