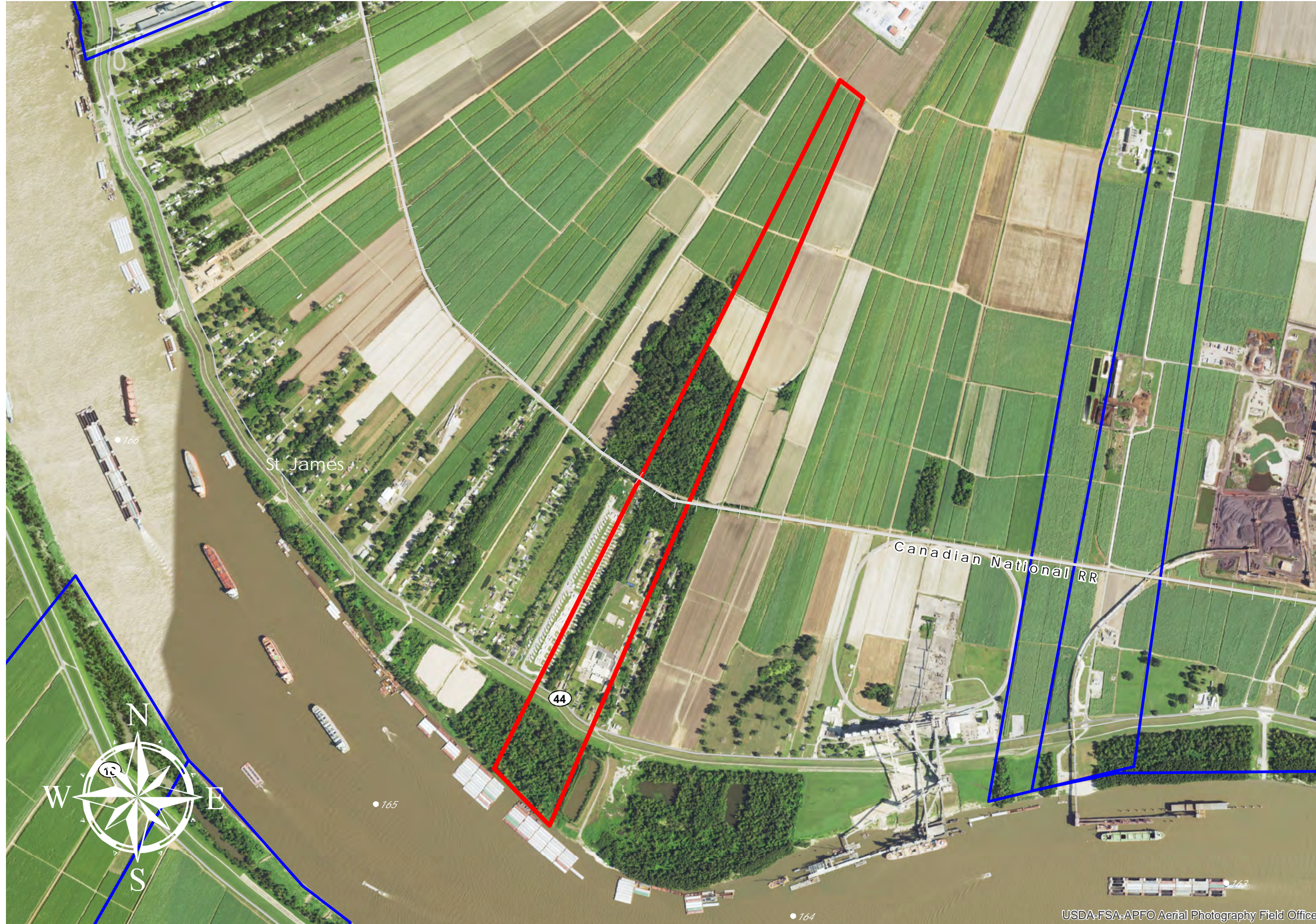
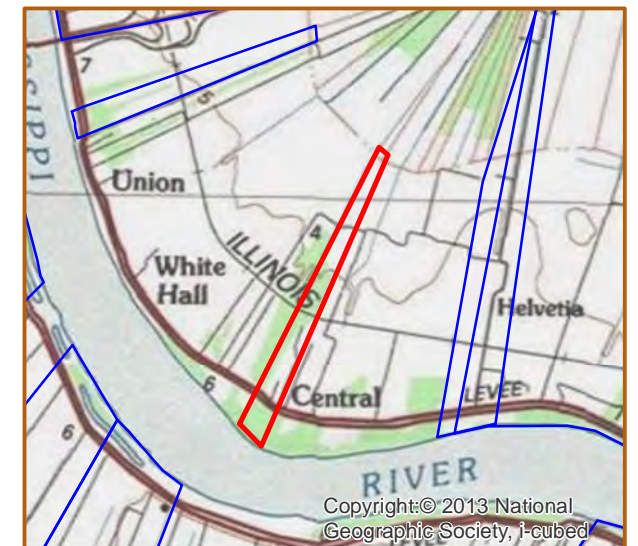
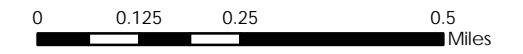


BALOT & WHITEHALL (#70)



- BALOT & WHITEHALL**
- +/- 240 Acres 97.1 Hectares
- +/- 980' River Frontage 298.7m River Frontage
- +/- 700' CN Rail Onsite 213.4m CN Rail Onsite
- Resident Industry
- Interstates
- U.S. Highway
- State Highway
- Railroads

Updated 2021-01-19



USDA-FSA-APFO Aerial Photography Field Office

Available Site Descriptions

PROPERTY NAME: BALOT & WHITEHALL		Map #: 70
Mile Marker: E 165	Acreage: 240.00	Hectares: 97.12
GENERAL DETAILS		
Site Draft: Deep Draft	River Frontage (in ft.): 980.00	Rail Frontage (in ft.): 700.00
AGENT DETAILS		
Agent: Steve Nosacka	Company: St. James Parish	Phone: 225-295-5631
		E-Mail: steve.trinity@cox.net
TRANSPORTATION		
Airport:	Louis Armstrong International (55 miles); Baton Rouge Metropolitan (37 miles); PSL Executive Regional Airport (33 miles)	
Rail:	CN (Onsite - 700.00 ft)	
Highway:	I-10 (10 miles); US 61 (9 miles); LA 70 (2.5 miles); LA 44 (Onsite)	
Zoning: None	Adjacent Land Use: Agricultural	
Access Road: Paved	Parish: St. James	
UTILITIES		
Electricity: Energy	Water: St. James Parish Utilities	
Natural Gas: St. James Parish Utilities	Sewage: St. James Parish Utilities	
Telecommunications: AT&T		