

BESSIE-K (#89)



BESSIE-K

+/- 1,245 Acres 503.8 Hectares
 +/- 4,900' River Frontage 1,493.5m River Frontage
 +/- 4,100' UP Rail Onsite 1,249.7m UP Rail Onsite

Resident Industry

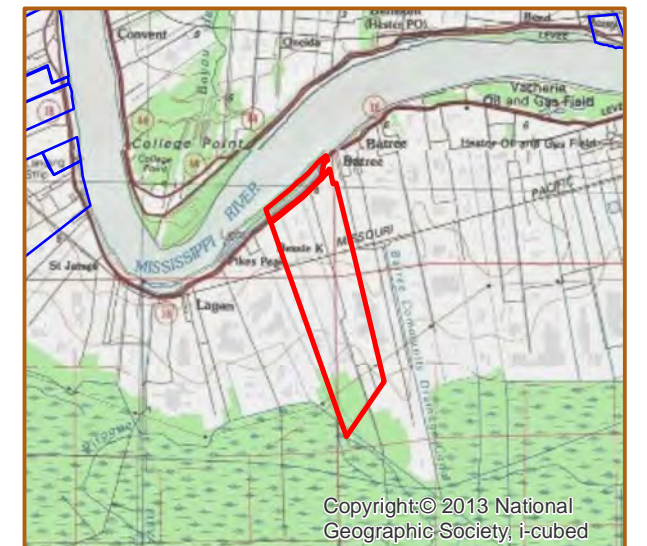
■ Interstates

+ Railroads

 U.S. Highway

 State Highway

Updated 2021-01-20



USDA-FSA-APFO Aerial Photography Field Office



Available Site Descriptions

PROPERTY NAME: BESSIE-K Map #: 89

Mile Marker: W 154.8 Acreage: 1,245.00 Hectares: 503.84

GENERAL DETAILS

Site Draft: Deep Draft River Frontage (in ft.): 4,900.00 Rail Frontage (in ft.): 4,100.00

AGENT DETAILS

Agent: Julia Fisher-Perrier Company: Port of South Louisiana Phone: 985-652-9278
E-Mail: jfisherperrier@portsl.com

TRANSPORTATION

Airport: Louis Armstrong International (42 miles); Baton Rouge Metropolitan (57 miles); PSL Executive Regional Airport (20 miles)

Rail: UP (Onsite - 4,100 ft)

Highway: I-10 (16 miles); US 61 (13 miles); LA 70 (13 miles); LA 3127 (Onsite); LA 18 (Borders)

Zoning: None Adjacent Land Use: Agricultural

Access Road: Paved Parish: St. James

UTILITIES

Electricity: Entergy Water: St. James Parish Utilities

Natural Gas: St. James Parish Utilities Sewage: St. James Parish Utilities

Telecommunications: AT&T