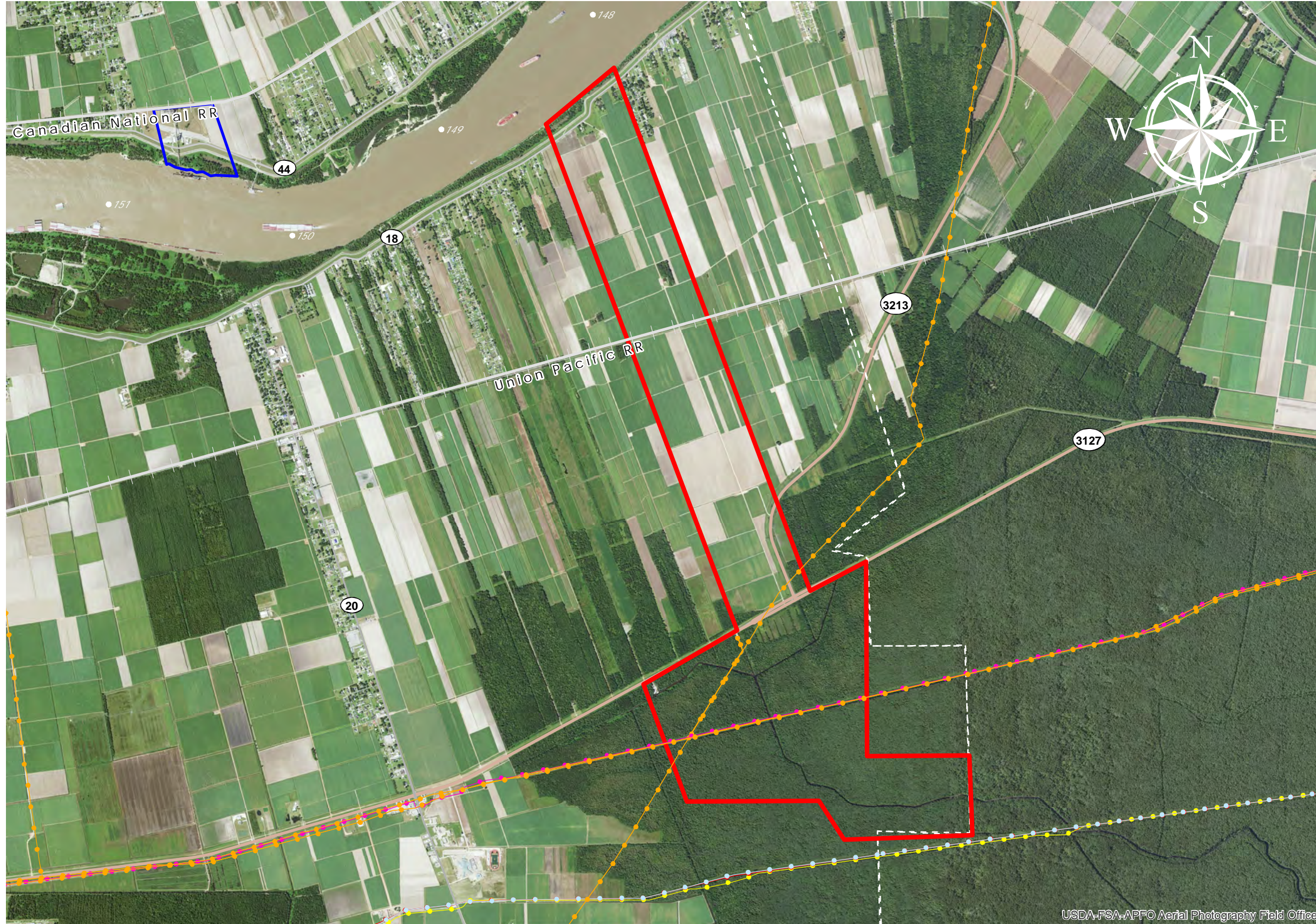


# PSL ST. JAMES PROPERTY (#88)



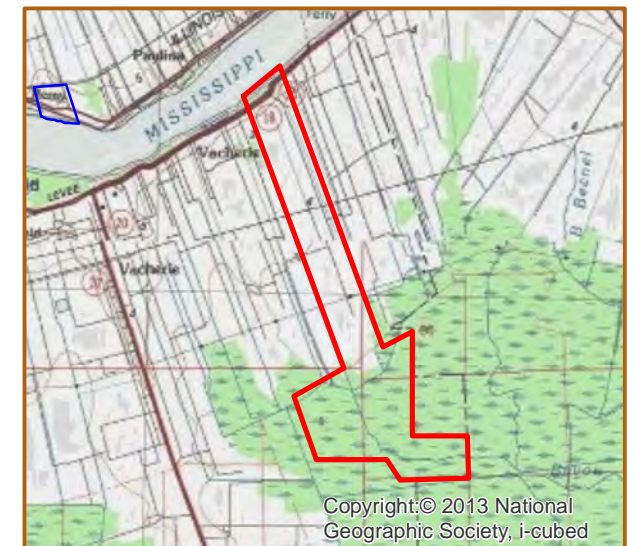
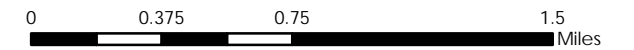
USDA-FSA-APFO Aerial Photography Field Office

**PSL St. James Property**

+/- 1,600 Acres *647.5 Hectares*  
 +/- 2,400' River Frontage *731.5m River Frontage*  
 +/- 2,300' UP Rail Onsite *701.0m UP Rail Onsite*

- Resident Industry
- Interstates
- U.S. Highway
- State Highway
- Railroads
- Anhydrous Ammonia
- Ethylene
- LPG
- Natural Gas
- NGL

Updated 2021-01-20







## Available Site Descriptions

PROPERTY NAME: PSL ST. JAMES PROPERTY Map #: 88

Mile Marker: W 147.9 Acreage: 1,600.00 Hectares: 647.50

### GENERAL DETAILS

Site Draft: Deep Draft River Frontage (in ft.): 2,400.00 Rail Frontage (in ft.): 2,300.00

### AGENT DETAILS

Agent: Julia Fisher-Perrier Company: Port of South Louisiana Phone: (985) 652-9278  
E-Mail: [jfisherperrier@portsl.com](mailto:jfisherperrier@portsl.com)

### TRANSPORTATION

Airport: Louis Armstrong International (41 miles); Baton Rouge Metropolitan (55 miles); PSL Executive Regional Airport (13 miles)

Rail: UP (Onsite - 2,300.00 ft)

Highway: I-10 (10 miles); US 61 (7 miles); LA 3127 (<1 mile); LA 18 (Borders)

Zoning: None Adjacent Land Use: Agricultural

Access Road: Paved Parish: St. James

### UTILITIES

Electricity: Entergy Water: St. James Parish Utilities

Natural Gas: St. James Parish Utilities Sewage: St. James Parish Utilities

Telecommunications: AT&T