

River Region

located in the River Parishes Region, Louisiana
on the Mississippi River
between New Orleans and Baton Rouge

POPULATION

2002 - 2007 Growth.....	9.1%
2007 Claritas Estimate.....	122,521
2000 Census.....	112,332
1990 Census.....	103,312

Age (2000)

0 - 19.....	33.6%
20 - 34.....	18.9%
35 - 54.....	38.8%
55 - 64.....	7.7%
65+.....	8.9%

Source: U.S. Census Bureau, 2006, 2000, and 1990

MARKET ACCESS

HIGHWAYS

Interstates.....	10, 12, 55, 310
U.S. Highways.....	61, 90
Louisiana Highways.....	18, 44, 3127, 3125

RAILWAYS

Kansas City Southern, Canadian National,
Union Pacific, Burlington Northern Santa Fe

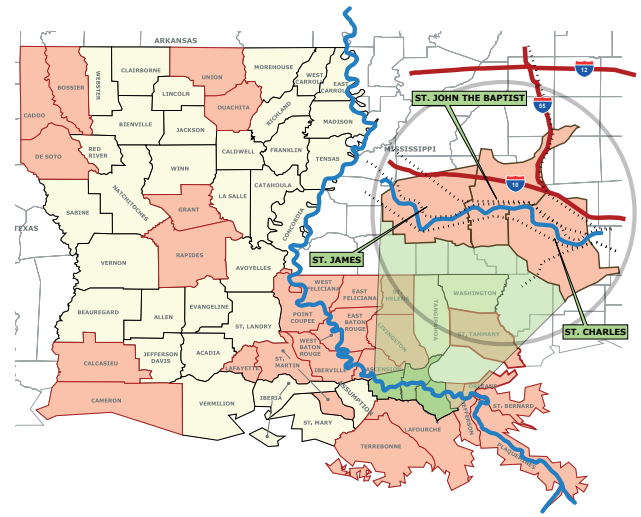
NAVIGABLE WATERWAYS/PORTS

Port of South Louisiana (region).....	0
45 ft. draft on the Mississippi River*	
Port of New Orleans.....	20
45 ft. draft on the Mississippi River*	

* Foreign Trade Zone

AIRPORTS

	DISTANCE IN MILES FROM REGION CENTER
St. John Parish Airport (general; cargo).....	2
4,000 & 1,219 sq.ft. runways	
St. Charles Parish Airport (general).....	10
Louis Armstrong International (commercial).....	20
10,080' & 7,000' runways	
312,000 sq.ft. warehouse/cargo	
Baton Rouge Metro Airport (commercial).....	50
7,000' runway	



MOTOR FREIGHT

25 freight carriers in the region.
Terminal facilities are available in the parish.

DISTANCE TO MAJOR CITIES

(in miles from center of region)

New Orleans, Louisiana.....	30
Houston, Texas.....	320
Birmingham, Alabama.....	385
Dallas, Texas.....	490
Nashville, Tennessee.....	500
Little Rock, Arkansas.....	510
Atlanta, Georgia.....	520
St. Louis, Missouri.....	670
Kansas City, Missouri.....	820
Chicago, Illinois.....	890

Source: mapquest.com

PARCEL SERVICE

Federal Express, DHL, United Parcel Service,
United States Postal Service

LABOR FORCE

CIVILIAN LABOR FORCE

2007 ANNUAL

Region.....	57,578
Louisiana.....	1,997,873

EMPLOYMENT

Region.....	55,152
Louisiana.....	1,921,343

UNEMPLOYMENT

Region.....	3.8%
Louisiana.....	4.2%

Source: Louisiana Department of Labor, Labor Market
Information, 2007 Annual

WAGES

SELECTED OCCUPATIONAL WAGES

CATEGORY	MEDIAN HOURLY (2006)
Professional	
Electrical Engineering.....	\$39.16
Civil Engineering.....	\$34.56
Computer Programmer.....	\$28.21
Computer Support Specialist.....	\$18.94
Retail	
Sales Clerk.....	\$11.06
Teller.....	\$9.92
Clerical	
Customer Service Representative.....	\$13.15
Office & Administrative Support.....	\$13.02
Insurance Claims Clerk.....	\$12.81
Secretaries (except legal & medical).....	\$12.12
Receptionist/Information Clerk.....	\$9.84
Skilled	
Electricians.....	\$20.73
Industrial Machinery Mechanic.....	\$19.89
Machinists.....	\$17.67
Unskilled	
Truck Drivers.....	\$15.66
Packer/Packager.....	\$10.43
Laborer/Freight Stock.....	\$10.37

Source: Bureau of Labor Statistics, Metropolitan Occupational Employment and Wage Estimates 2006

EMPLOYMENT INCOME

	2005	2004
Total Personal (\$000).....	\$21,686M	\$20,162M
Per Capita Personal.....	\$29,654	\$27,782
Median Household (2007).....	\$48,830	

Source: U.S. Census Bureau, Bureau of Economic Analysis; Claritas 2007

AVG EMPLOYMENT by MAJOR INDUSTRY DIVISION

	REGION	STATE
Agriculture.....	0.6%	0.6%
Mining.....	1.0%	2.5%
Utilities.....	2.4%	0.8%
Construction.....	10.8%	7.7%
Manufacturing.....	23.3%	8.4%
Wholesale.....	6.4%	
Trade.....		4.0%
Retail Trade.....	10.0%	12.2%
Transportation/Warehouse.....	7.7%	4.3%

	REGION	STATE
Information.....	0.9%	1.7%
Finance/Insurance.....	1.7%	3.3%
Real Estate.....	1.5%	1.9%
Prof/Tech Services.....	2.8%	4.4%
Mng of Co.....	1.7%	1.2%
Admin & Waste.....	9.3%	5.4%
Education Services.....	-	8.8%
Healthcare/Soc.....	7.9%	14.0%
Arts/Entertainment/Rec.....	1.2%	2.2%
Accommodation/Food.....	6.0%	8.5%
Other Services.....	1.5%	2.6%
Public Administration.....	4.2%	5.4%

Source: LA. Department of Labor, Employment & Total Wages Paid by Employers Subject to the LA Employment Security Law, 2006

EDUCATION

FOUR-YEAR COLLEGES & UNIVERSITIES

	LOCATION	ENROLLMENT
Louisiana State University.....	Baton Rouge	32,875
U. of Louisiana Lafayette.....	Lafayette	16,302
Southeastern Louisiana U.....	Hammond	15,118
Tulane University.....	New Orleans	10,606
Southern University.....	Baton Rouge	9,103

TWO-YEAR COLLEGES

Delgado Community College...	New Orleans	11,916
Baton Rouge Community.....	Baton Rouge	6,525
College		

Source: University of Louisiana System, Fall 2006

TECHNICAL COLLEGES

CAMPUS	PROGRAMS W/HIGHEST ENROLLMENT
River Region Campus.....	Petro-Tech; Accounting; IT; Design; Automotive Tech

Source: Louisiana Community & Technical College System, 2007

PRIMARY/SECONDARY EDUCATION

CATEGORY	2007 ENROLLMENT
Public Schools.....	20,405
Non-Public Schools.....	n/a
Teacher/Student Ratio.....	n/a
ACT Score, 2007 (regional average).....	19.0

EDUCATIONAL ATTAINMENT

High School Graduate or Higher.....	78%
Bachelor's Degree or Higher.....	14.6%

Source: Claritas, 2007

RESEARCH BASE

- Pennington Biomedical Research Center
- Louisiana Partnership for Technology & Innovation
- LIGO (Laser Interferometer Gravitational Wave Observatory)
- Center for Advanced Microstructures & Devices
- Manufacturing Partnership of Louisiana

INCENTIVES

- **QUALITY JOBS PROGRAMS:** Annual refundable credit up to 6% of payroll for a period of up to 10 years
- **INDUSTRIAL PROPERTY TAX EXEMPTION:** Exempts new manufacturers and expansions from state, parish, and local property taxes for up to 10 years
- **ENTERPRISE ZONE:** Tax credits and rebates for hiring within a designated zone
- **INVENTORY TAX CREDIT:** 100% income tax credit on inventory taxes paid
- **RESEARCH & DEVELOPMENT TAX CREDIT PROGRAM:** Income/franchise tax credits up to 40% of R&D expenditures
- **FILM & PRODUCTION TAX CREDIT:** Tax credits for filming and production of commercials, film, TV, etc. for up to 30%

TAXES

BUSINESS SALES TAX

Parish.....	2.5% - 4.0%
State.....	4.0%

Source: Parish Sales Tax Office

INDIVIDUAL INCOME TAX

One of the lowest in the nation. There are no local occupation or local income taxes in the state of Louisiana.

PARISH MILLAGE

West Bank.....	\$104.04 - \$123.99
East Bank.....	\$105.57 - \$123.66

PROPERTY TAXES/ASSESSMENT RATIO

Only local and parish governments levy property taxes in Louisiana. There is no sales tax.

Assessors are required by law to assess on improvements of industrial property at 15% of fair market value (land at 10%).

Private residences are assessed at 10% of fair market value. There is no property tax on the first \$75,000.

GOVERNMENT

PARISH

MUNICIPALITY

Parish President and Council.....Mayor

QUALITY OF LIFE

CLIMATE AVERAGES

January Temperature.....	60°
July Temperature.....	90°
Annual Temperature.....	68°
Annual Rainfall.....	60"

MEDICAL SERVICES

MEDICAL FACILITY	# OF BEDS
St. Charles Parish Hospital (parish).....	56
River Parishes Hospital (river region).....	106
LaPlace Rehabilitation Hospital (river region).....	22
St. James Parish Hospital (river region).....	25
Ochsner/Kenner Regional Hospital.....	203
East Jefferson General Hospital.....	455
Ochsner Foundation Hospital.....	483
Children's Hospital.....	201

RECREATION

Fishing, Boating, Camping, Biking, Hunting, Golf, Tennis, Swimming, Bowling, Skating

FESTIVALS/EVENTS

Destrehan Plantation Spring Arts & Crafts Festival; Louisiana Catfish Festival; Christmas on the Bayou; Andouille Festival; Oak Alley Plantation Annual Spring Crafts Festival; Festival of the Bonfires

RIVER PARISHES TOURISM COMMISSION

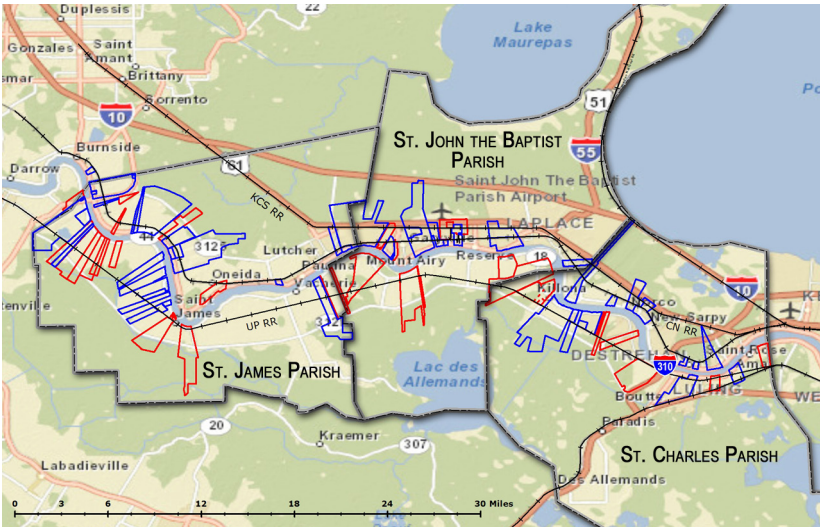
www.takemetotheriver.com/rpt/

UTILITIES/SERVICES

Electricity.....	Entergy
Natural Gas.....	Atmos Energy, LA; Parishes
Water.....	Parishes
Sewage.....	Parishes
Telephone.....	AT&T; Cox Communications
Fiber Optic.....	Network along I-10 from New Orleans to Lake Charles into Texas

TOP INDUSTRIAL SITES★

- GLENDAL HYMELIA:**
2,500-acre riverfront site with rail access on the west bank of the Mississippi River
- RICH BEND PLANTATION:**
1,750-acre riverfront site with 1,300' of river frontage and 3,000 of rail frontage
- ROBERT BROTHERS FARM:**
1,749-acre riverfront site in St. John Parish
- WINCHESTER/ACADIA:**
1,490-acre site on the west bank of the St. James Parish
- ZERINGUE/ST. EMMA:**
1,464-acre site on the Mississippi River in St. James Parish
- GLOBALPLEX SITE:**
130-acre certified site on the Mississippi River in St. John Parish



NOTE: Site Profiles for each of the available sites in the River Region are available on the Port of South Louisiana website www.portsl.com/gis.htm

REPRESENTATIVE EMPLOYERS IN THE REGION

COMPANY	PRODUCT/SERVICE	# OF EMPLOYEES	WEBSITE
Dow St. Charles.....	Chemicals & Plastics	500 - 999	www.dow.com
Valero.....	Oil Refinery	500 - 999	www.valero.com
Marathon Petroleum.....	Petroleum Refining	500 - 999	www.marathon.com
Randa Corporation.....	Clothing Distribution	100 - 499	www.randa.com
Louisiana Sugar Refinery.....	Sugar Refining	100 - 499	
Mosaic Fertilizers.....	Nitrogenous Fertilizer Manufacturing	100 - 499	www.mosaicco.com
ADM Growmark.....	Grain Export	100 - 499	www.adm.com
Allfax Specialties.....	Wholesale Sales	50 - 99	www.allfax.com
Baumer Foods.....	Condiment Manufacturing	50 - 99	www.baumerfoods.com
Dupont.....	Chemicals, Inorganic	50 - 99	www.dupont.com
Convent Marine.....	Coal Distribution	20 - 49	
Louisiana Pipe and Steel.....	Pipe Fabrication	10 - 49	

RIVER REGION ECONOMIC DEVELOPMENT INITIATIVE (RREDI)

c/o Port of South Louisiana
171 Belle Terre Boulevard - LaPlace, Louisiana 70068
P.O. Box 909 - LaPlace, Louisiana 70069-0909
Tel 985-652-9278 - Fax 985-652-9518
www.portsl.com/businessdevelopment.htm

