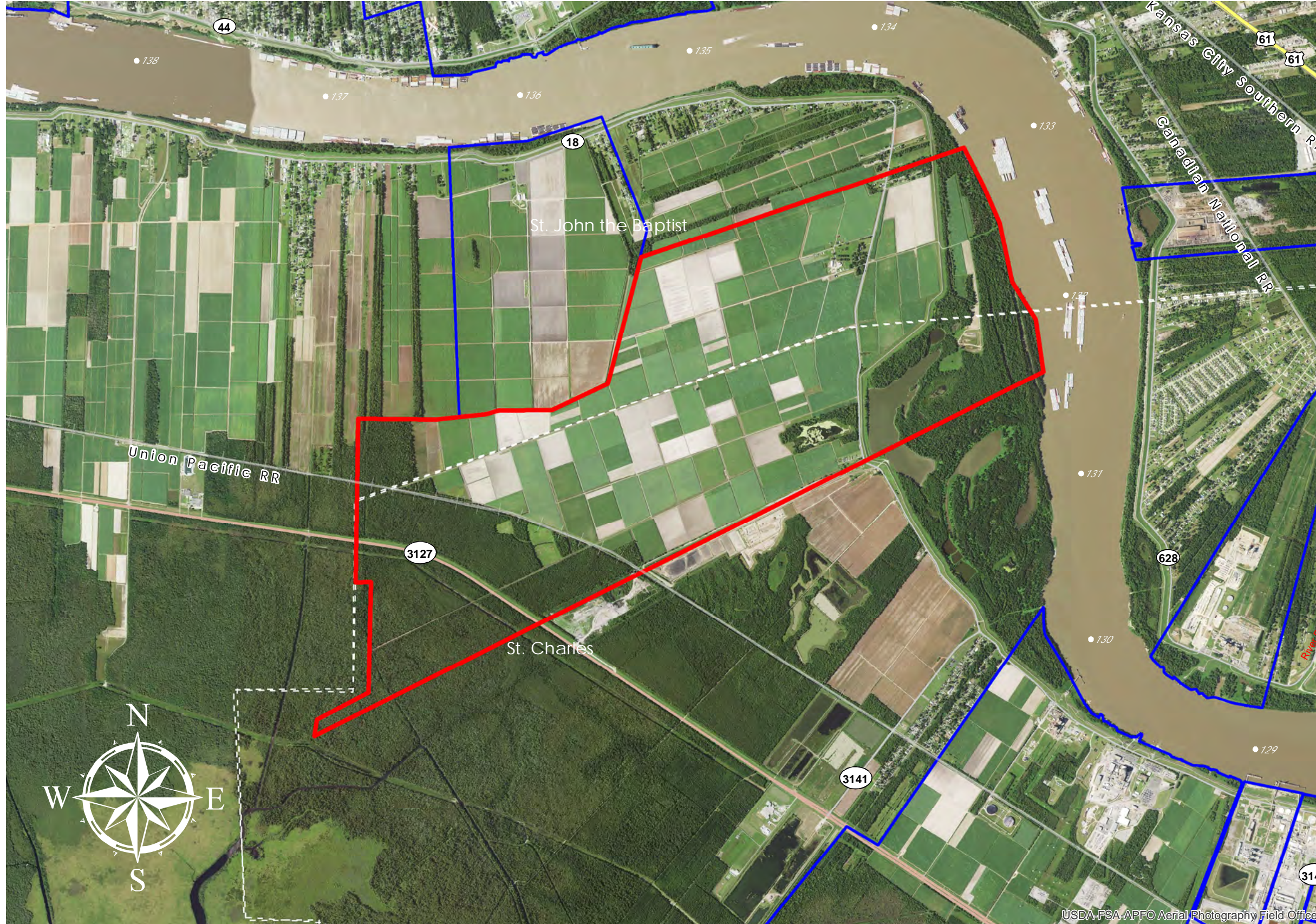


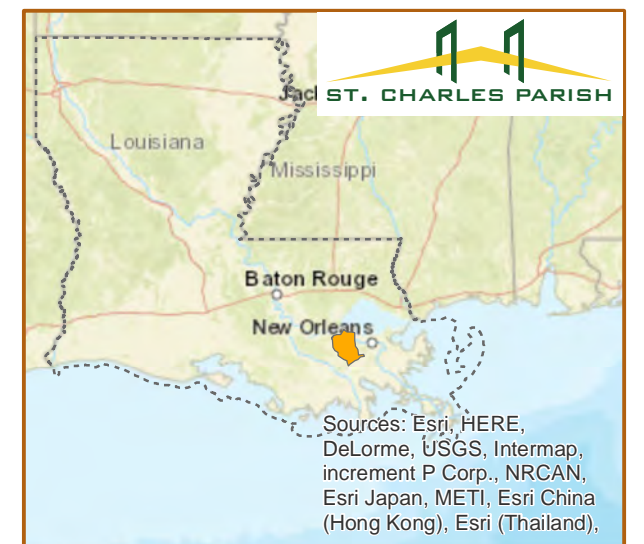
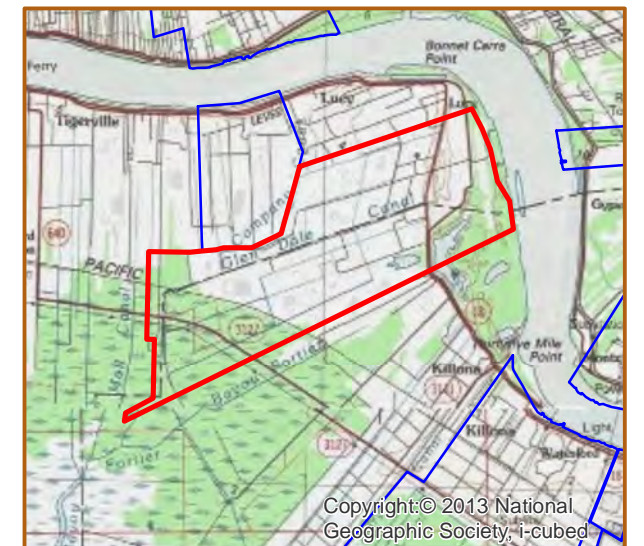
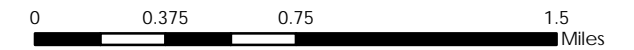
# GLENDALE HYMELIA (#82)



**GLENDALE HYMELIA**  
 +/- 2,500 Acres *1,011.7 Hectares*  
 +/- 5,808' River Frontage *1,770.3m River Frontage*  
 +/- 8,448' UP Rail Onsite *2,574.9m UP Rail Onsite*

- Resident Industry
- Interstates
- U.S. Highway
- State Highway
- Railroads

Updated 2021-01-08



## Available Site Descriptions

PROPERTY NAME: **GLENDALE HYMELIA** Map #: **82**

Mile Marker: **W 131.4** Acreage: **2,500.00** Hectares: **1,011.73**

### GENERAL DETAILS

Site Draft: **Deep Draft** River Frontage (*in ft.*): **5,808.00** Rail Frontage (*in ft.*): **8,448.00**

### AGENT DETAILS

Agent: **Corey Fauchaux** Company: **St. Charles Parish Dept of ED** Phone: **(985) 783-5140**

### TRANSPORTATION

Airport: **Louis Armstrong International (21 miles); PSL Executive Regional Airport (33 miles)**

Rail: **UP (Onsite - 8,448 ft)**

Highway: **I-10 (20 miles); I-310 (9 miles); US 90 (9 miles); US 61 (15 miles); LA 3127 (Onsite); LA 18 (Onsite)**

Zoning: **Industrial** Adjacent Land Use: **Agricultural**

Access Road: **Paved** Parish: **St. Charles/St. John the Baptist**

### UTILITIES

Electricity: **Entergy** Water: **St. Charles Parish Utilities**

Natural Gas: **Atmos** Sewage: **St. Charles Parish Utilities**

Telecommunications: **AT&T & Cox**