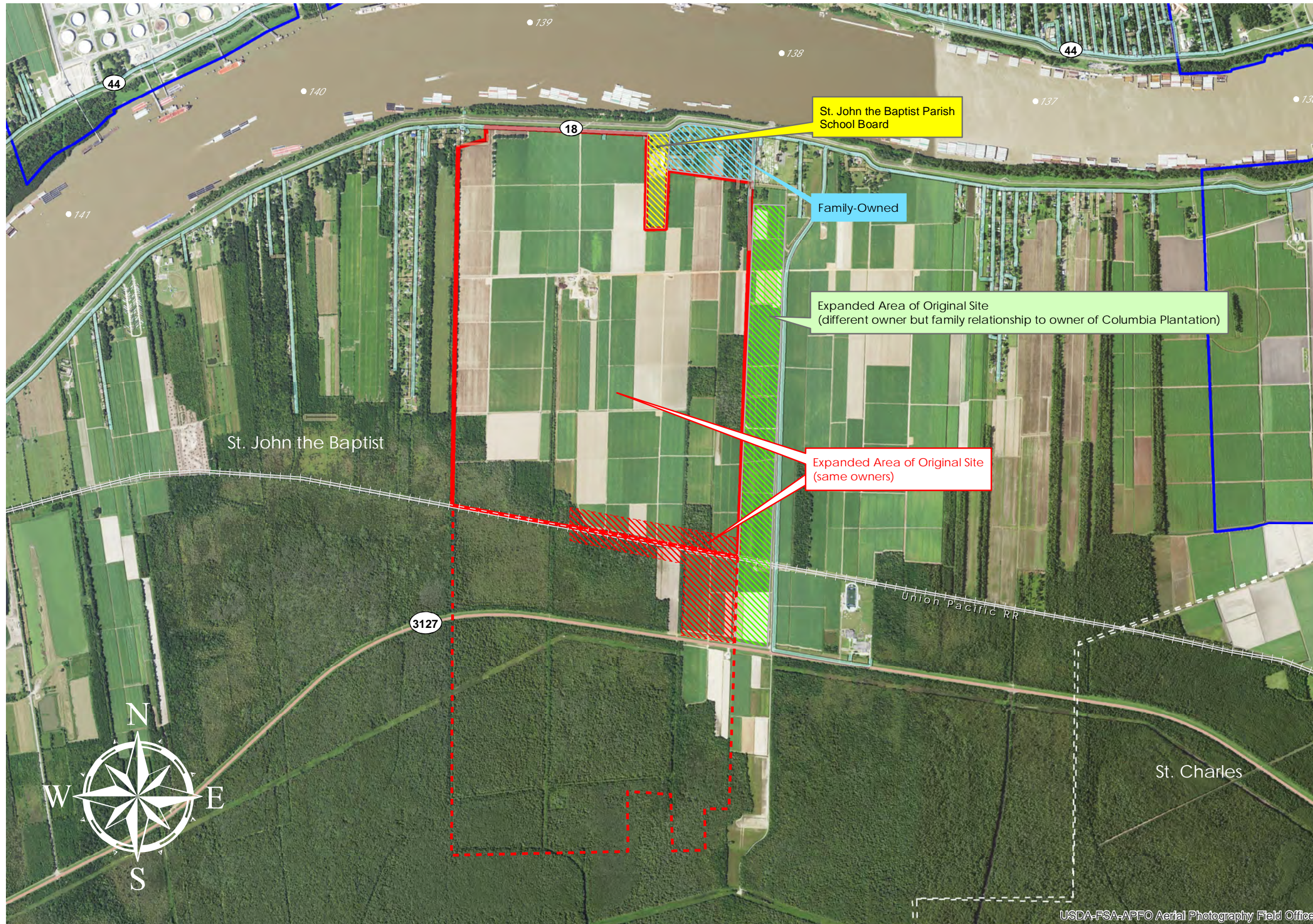


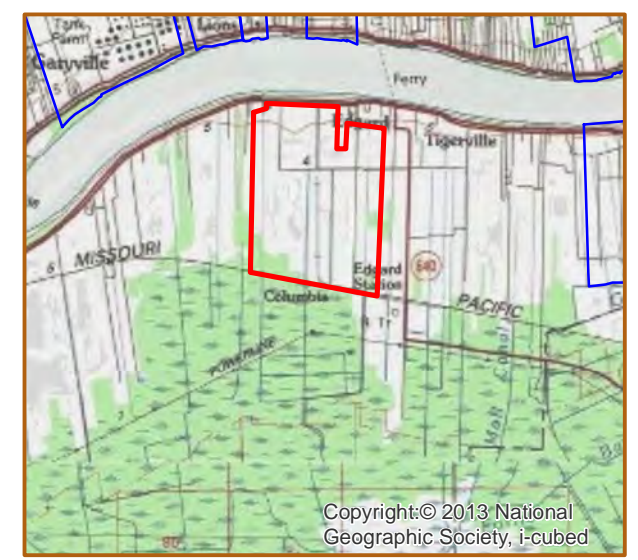
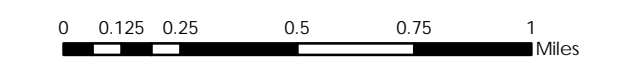
COLUMBIA (#83)



COLUMBIA
 +/- 900 Acres 364.2 Hectares
 +/- 3,300' River Frontage 1,005.8m River Frontage
 +/- 4,800' UP Rail Onsite 1,463.1m UP Rail Onsite

Legend:
 ■ Resident Industry
 ■ Interstates
 ■ U.S. Highway
 ○ State Highway
 + Railroads
 — Waterline
 — Wastewater

Updated 2021-01-14



Available Site Descriptions

PROPERTY NAME: COLUMBIA Map #: 83

Mile Marker: W 138.8 Acreage: 900.00 Hectares: 364.22

GENERAL DETAILS

Site Draft: Deep Draft River Frontage (in ft.): 3,300.00 Rail Frontage (in ft.): 4,800.00

AGENT DETAILS

Agent: Stanley Bienemy Company: St. John Parish Dept of ED Phone: 985-652-9569
E-Mail: s.bienemy@stjohn-la.gov

TRANSPORTATION

Airport: Louis Armstrong International (26 miles); Baton Rouge Metropolitan (62 miles);
PSL Executive Regional Airport (18 miles)

Rail: UP (Onsite - 4,800 ft)

Highway: I-10 (15 miles); US 61 (12 miles); LA 641 (12 miles); LA 640 (0.3 miles);
LA 3127 (Onsite); LA 18 (Onsite)

Zoning: Industrial Adjacent Land Use: Agricultural

Access Road: Paved Parish: St. John the Baptist

UTILITIES

Electricity: Entergy Water: St. John the Baptist Parish Utilities

Natural Gas: Atmos Sewage: St. John the Baptist Parish Utilities

Telecommunications: AT&T