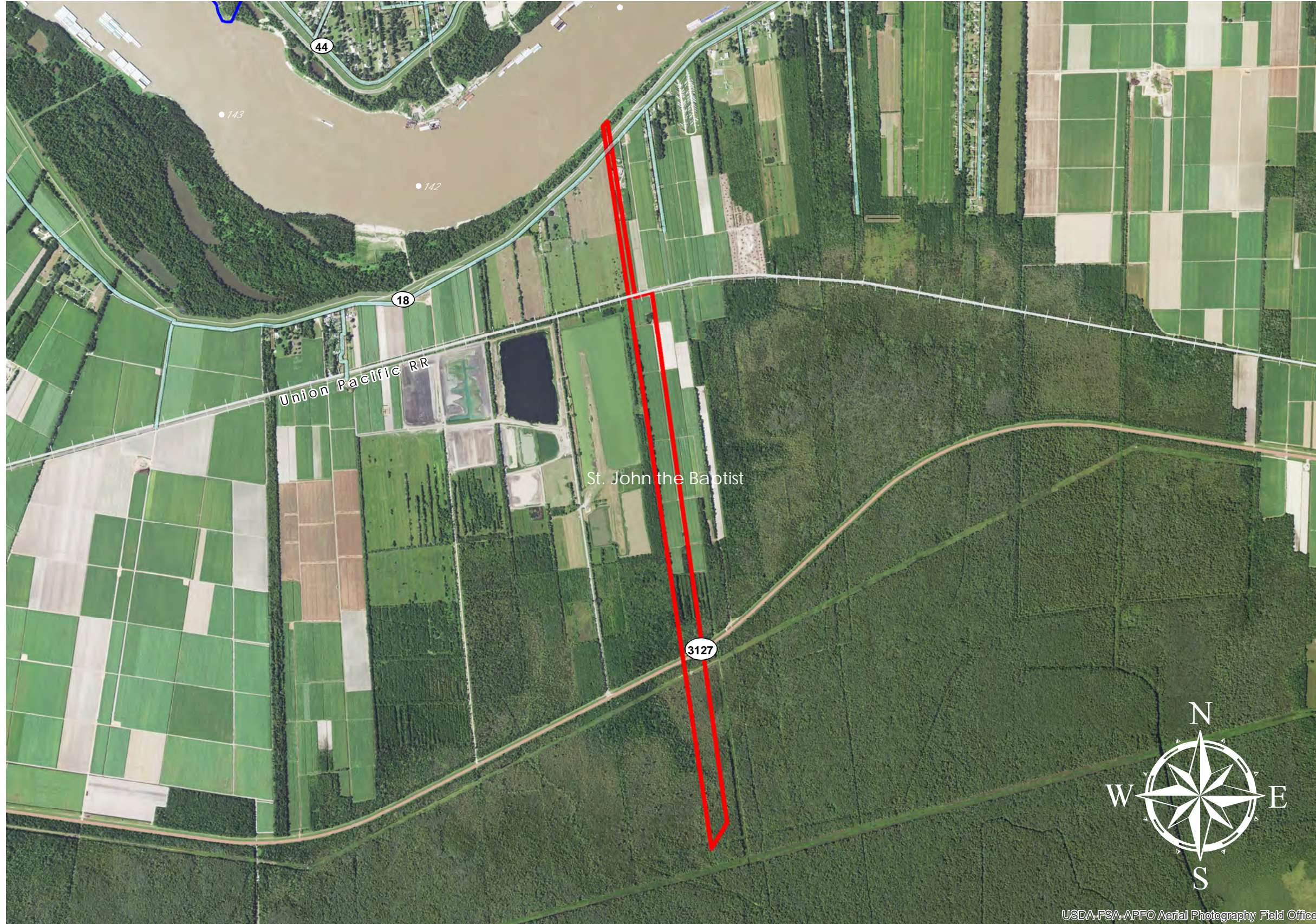


WHITEROSE (#84)

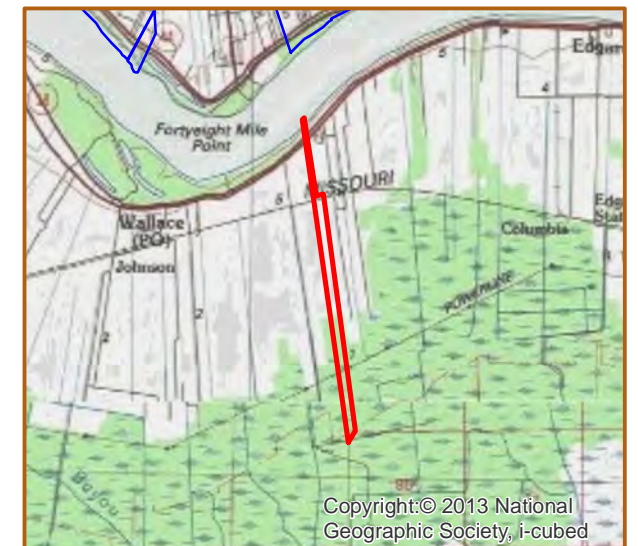
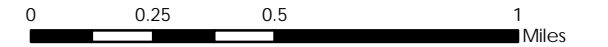


USDA-FSA-APFO Aerial Photography Field Office

WHITEROSE
 +/- 300 Acres *121.4 Hectares*
 +/- 854' River Frontage *260.3m River Frontage*
 +/- 600' UP Rail Onsite *182.9m UP Rail Onsite*

- Resident Industry
- Interstates
- U.S. Highway
- State Highway
- Railroads
- Waterline
- Wastewater

Updated 2021-01-14



Available Site Descriptions

<p>PROPERTY NAME: <u>WHITEROSE</u> Map #: <u>84</u></p> <p>Mile Marker: <u>W 141.1</u> Acreage: <u>300.00</u> Hectares: <u>121.40</u></p>
<p>GENERAL DETAILS</p> <p>Site Draft: <u>Deep Draft</u> River Frontage (in ft.): <u>854.00</u> Rail Frontage (in ft.): <u>600.00</u></p>
<p>AGENT DETAILS</p> <p>Agent: <u>Stanley Bienemy</u> Company: <u>St. John Parish Dept of ED</u> Phone: <u>985-652-9569</u> E-Mail: s.bienemy@stjohn-la.gov</p>
<p>TRANSPORTATION</p> <p>Airport: <u>Louis Armstrong International (48 miles); Baton Rouge Metropolitan (60 miles); PSL Executive Regional Airport (18 miles)</u></p> <p>Rail: <u>UP (600 ft)</u></p> <p>Highway: <u>I-10 (14 miles); US 61 (11 miles); LA 641 (10 miles); LA 3127 (Onsite); LA 18 (Onsite)</u></p>
<p>Zoning: <u>Industrial</u> Adjacent Land Use: <u>Agricultural</u></p> <p>Access Road: <u>Paved</u> Parish: <u>St. John the Baptist</u></p>
<p>UTILITIES</p> <p>Electricity: <u>Entergy</u> Water: <u>St. John the Baptist Parish Utilities</u></p> <p>Natural Gas: <u>Atmos</u> Sewage: <u>St. John the Baptist Parish Utilities</u></p> <p>Telecommunications: <u>AT&T</u></p>