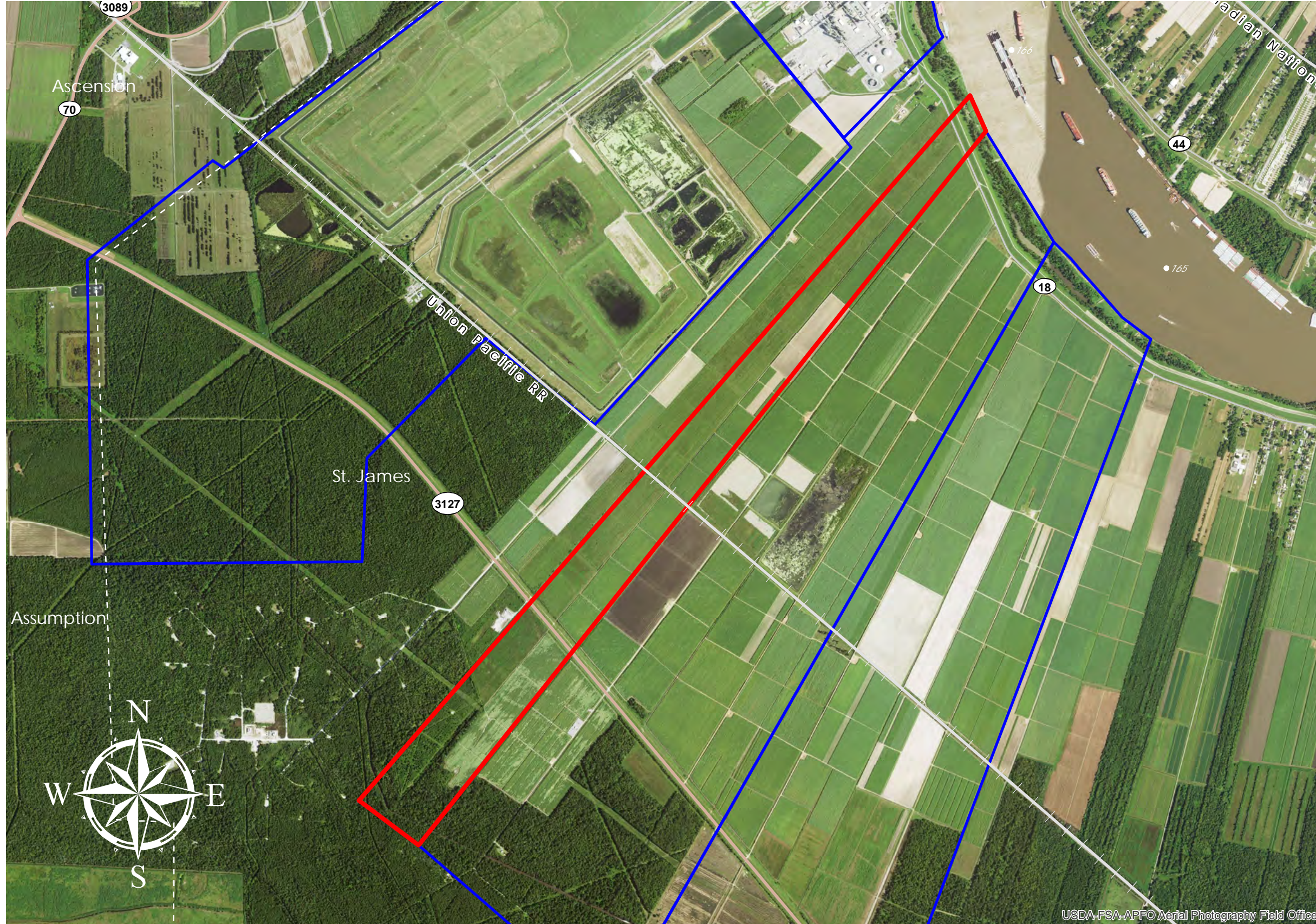


ELINA [LOWER] (#95)



ELINA (LOWER)

+/- 470 Acres	190.2 Hectares
+/- 790' River Frontage	240.8m River Frontage
+/- 1,000' UP Rail Onsite	335.3m UP Rail Onsite

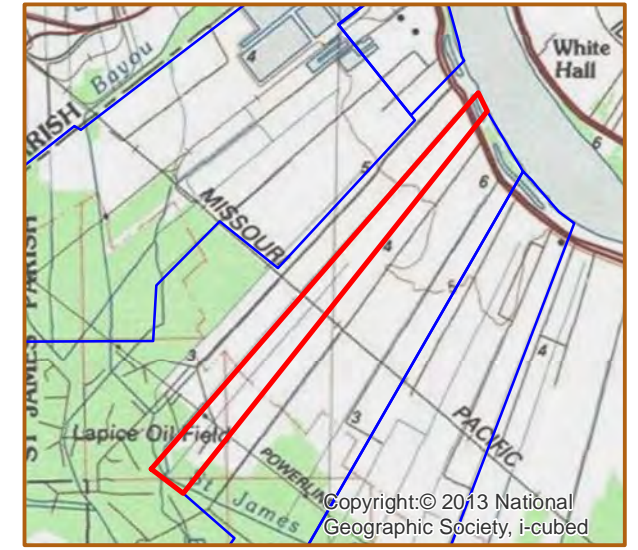
Resident Industry

Interstates **Railroads**

U.S. Highway

State Highway

Updated 2021-05-17



USDA-FSA-APFO Aerial Photography Field Office

Available Site Descriptions

PROPERTY NAME: <u>ELINA (LOWER)</u>		Map #: <u>95</u>	
Mile Marker: <u>W 165.9</u>		Acreage: <u>470.00</u>	
		Hectares: <u>190.20</u>	
GENERAL DETAILS			
Site Draft: <u>Deep Draft</u>		River Frontage (in ft.): <u>790.00</u>	
		Rail Frontage (in ft.): <u>1,000.00</u>	
AGENT DETAILS			
Agent: <u>Steve Nosacka</u>		Company: <u>St. James Parish</u>	
		Phone: <u>225-295-5631</u>	
		E-Mail: <u>steve_trinity@cox.net</u>	
TRANSPORTATION			
Airport: <u>Louis Armstrong International (59 miles); Baton Rouge Metropolitan (48 miles); PSL Executive Regional Airport (36 miles)</u>			
Rail: <u>UP (Onsite - 1,000.00 ft)</u>			
Highway: <u>I-10 (14 miles); US 61 (16 miles); LA 70 (2 miles); LA 3127 (Onsite); LA 18 (Onsite)</u>			
ZONING AND LAND USE			
Zoning: <u>Industrial</u>		Adjacent Land Use: <u>Agricultural/Industrial</u>	
Access Road: <u>Paved</u>		Parish: <u>St. James</u>	
UTILITIES			
Electricity: <u>Entergy</u>		Water: <u>St. James Parish Utilities</u>	
Natural Gas: <u>Atmos</u>		Sewage: <u>St. James Parish Utilities</u>	
Telecommunications: <u>AT&T</u>			