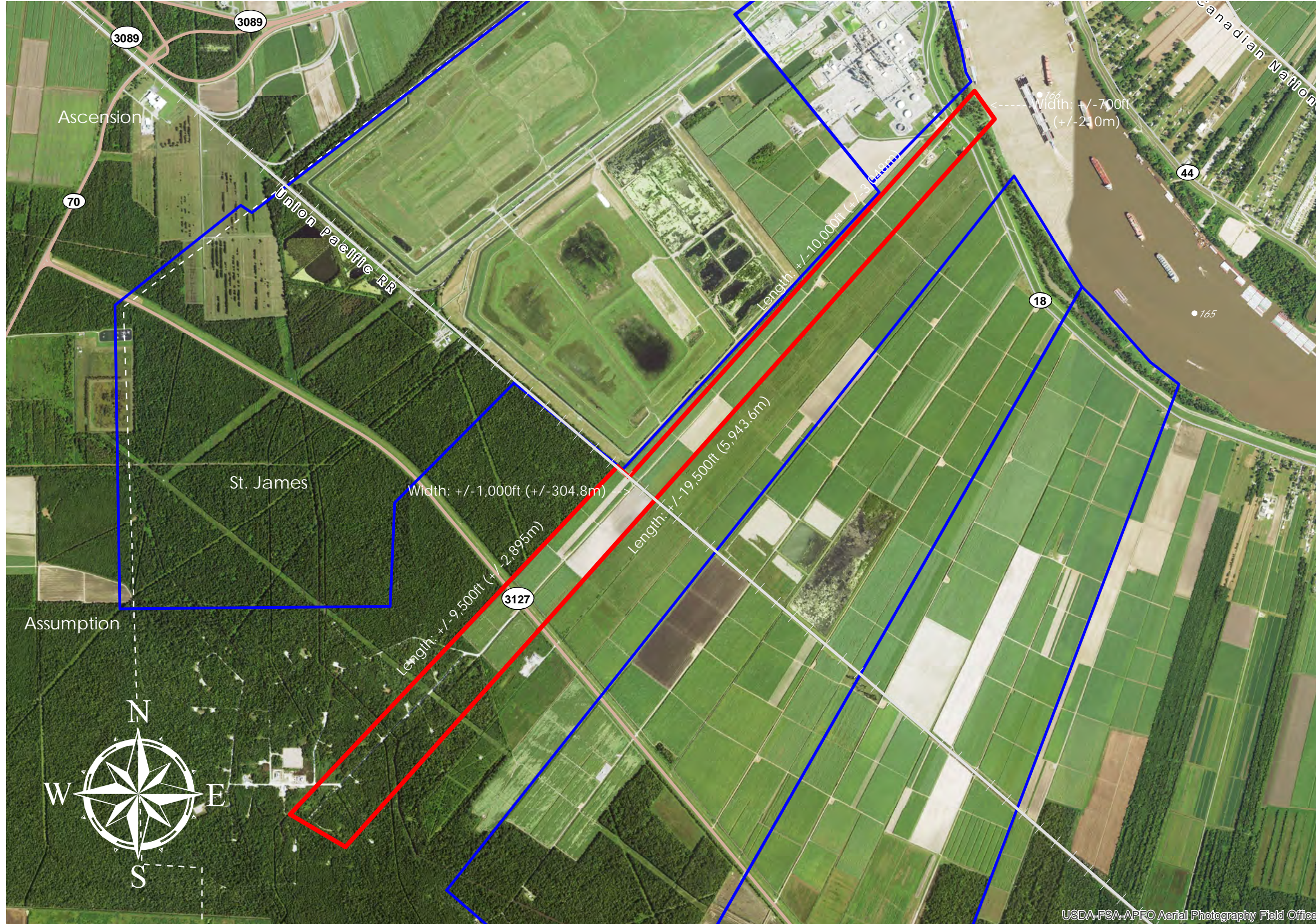


# ELINA [UPPER] (#96)



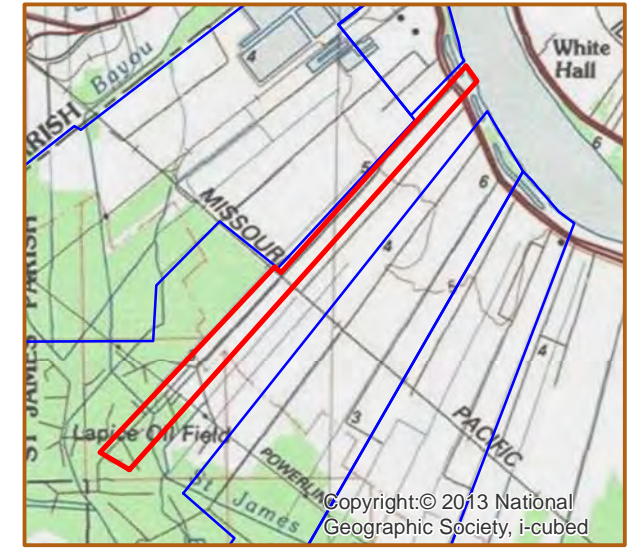
**ELINA (UPPER)**

+/- 406 Acres	164.3 Hectares
+/- 700' River Frontage	213.4m River Frontage
+/- 1,270' UP Rail Onsite	387.1m UP Rail Onsite

**Resident Industry**

■ Interstates      ■ Railroads  
  U.S. Highway      + Railroads  
  State Highway

Updated 2021-05-17



## Available Site Descriptions

PROPERTY NAME: ELINA (UPPER) Map #: 96

Mile Marker: W 166 Acreage: 406.00 Hectares: 164.30

### GENERAL DETAILS

Site Draft: Deep Draft River Frontage (in ft.): 700.00 Rail Frontage (in ft.): 1,270.00

### AGENT DETAILS

Agent: Steve Nosacka Company: St. James Parish Phone: 225-295-5631  
E-Mail: [steve\\_trinity@cox.net](mailto:steve_trinity@cox.net)

### TRANSPORTATION

Airport: Louis Armstrong International (59 miles); Baton Rouge Metropolitan (48 miles); PSL Executive Regional Airport (36 miles)

Rail: UP (Onsite - 1,270.00 ft)

Highway: I-10 (14 miles); US 61 (16 miles); LA 70 (2 miles); LA 3127 (Onsite); LA 18 (Onsite)

Zoning: Industrial Adjacent Land Use: Agricultural/Industrial

Access Road: Paved Parish: St. James

### UTILITIES

Electricity: Entergy Water: St. James Parish Utilities

Natural Gas: Atmos Sewage: St. James Parish Utilities

Telecommunications: AT&T