

GAVILON (#49)

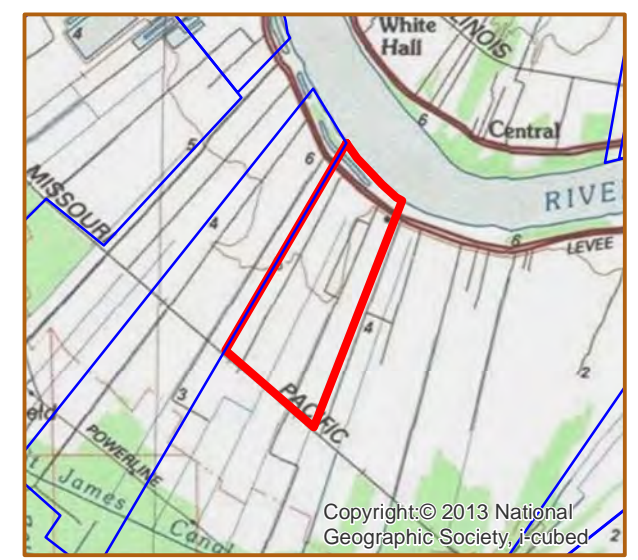
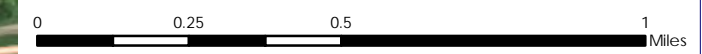


GAVILON

+/- 750 Acres	303.5 Hectares
+/- 2,780' River Frontage	847.3m River Frontage
+/- 4,400' UP Rail Onsite	1,341.1m UP Rail Onsite

Resident Industry
 Interstates
 U.S. Highway
 State Highway
 Railroads

Updated 2021-05-17



Source: Esri, DigitalGlobe, GeoEye, Earthstar Geographics, CNES/Airbus DS, USDA, USGS, AEX, Getmapping, Aerogrid, IGN, IGP, swisstopo, and the GIS User Community, Esri, HERE, DeLorme, MapmyIndia, © OpenStreetMap contributors

Available Site Descriptions

PROPERTY NAME: <u>GAVILON</u>	Map #: _____	
Mile Marker: <u>W 165</u>	Acreage: <u>750.00</u>	Hectares: <u>303.51</u>
GENERAL DETAILS		
Site Draft: <u>Deep Draft</u>	River Frontage (in ft.): <u>≈2,780.00</u>	Rail Frontage (in ft.): <u>≈4,400.00</u>
AGENT DETAILS		
Agent: <u>Steve Nosacka</u>	Company: <u>St. James Parish</u>	Phone: <u>225-295-5631</u>
		E-Mail: <u>steve_trinity@cox.net</u>
TRANSPORTATION		
Airport: <u>Louis Armstrong International (62 miles); Baton Rouge Metropolitan (48 miles); PSL Executive Regional Airport (40 miles)</u>		
Rail: <u>UP (Onsite - ≈4,400.00 ft)</u>		
Highway: <u>I-10 (14 miles); US 61 (16 miles); LA 70 (2 miles); LA 3127 (0.8 miles); LA 18 (Onsite)</u>		
Zoning: <u>None</u>	Adjacent Land Use: <u>Agricultural</u>	
Access Road: <u>Paved</u>	Parish: <u>St. James</u>	
UTILITIES		
Electricity: <u>Energy</u>	Water: <u>St. James Parish Utilities</u>	
Natural Gas: <u>St. James Parish Utilities</u>	Sewage: <u>St. James Parish Utilities</u>	
Telecommunications: <u>AT&T</u>		