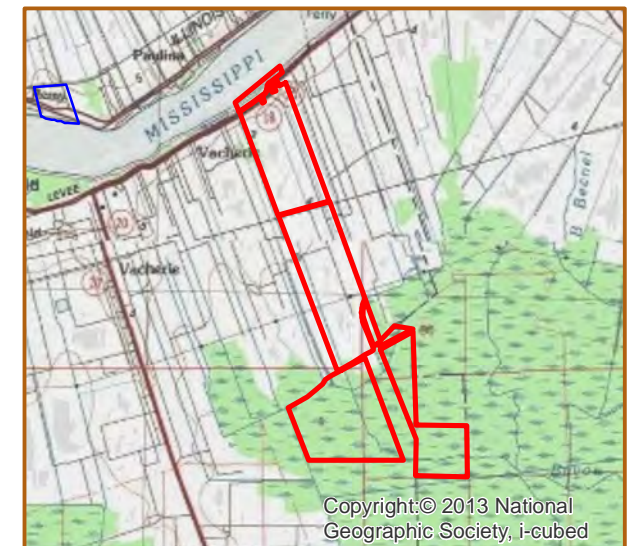
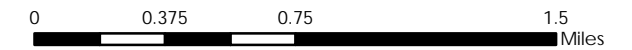


PSL ST. JAMES PROPERTY (#88)



- PSL St. James Property
- +/- 1,725.57 Acres *698.314 Hectares*
- +/- 3,000' River Frontage *914.4m River Frontage*
- +/- 2,800' UP Rail Onsite *853.4m UP Rail Onsite*
- Resident Industry
- Interstates Railroads
- U.S. Highway
- State Highway

Updated 2021-06-03



Source: Esri, DigitalGlobe, GeoEye, Earthstar Geographics, CNES/Airbus DS, USDA, USGS, AEX, Getmapping, Aerogrid, IGN, IGP, swisstopo, and the GIS User Community



Available Site Descriptions

PROPERTY NAME: PSL ST. JAMES PROPERTY Map #: 88

Mile Marker: W 147.9 Acreage: 1,725.57 Hectares: 698.32

GENERAL DETAILS

Site Draft: Deep Draft River Frontage (in ft.): 3,000.00 Rail Frontage (in ft.): 2,800.00

AGENT DETAILS

Agent: Julia Fisher-Perrier Company: Port of South Louisiana Phone: (985) 652-9278
E-Mail: jfisherperrier@portsl.com

TRANSPORTATION

Airport: Louis Armstrong International (41 miles); Baton Rouge Metropolitan (55 miles);
PSL Executive Regional Airport (13 miles)

Rail: UP (Onsite - 2,800.00 ft)

Highway: I-10 (10 miles); US 61 (7 miles); LA 3127 (<1 mile); LA 18 (Borders)

Zoning: None Adjacent Land Use: Agricultural

Access Road: Paved Parish: St. James

UTILITIES

Electricity: Entergy Water: St. James Parish Utilities

Natural Gas: St. James Parish Utilities Sewage: St. James Parish Utilities

Telecommunications: AT&T