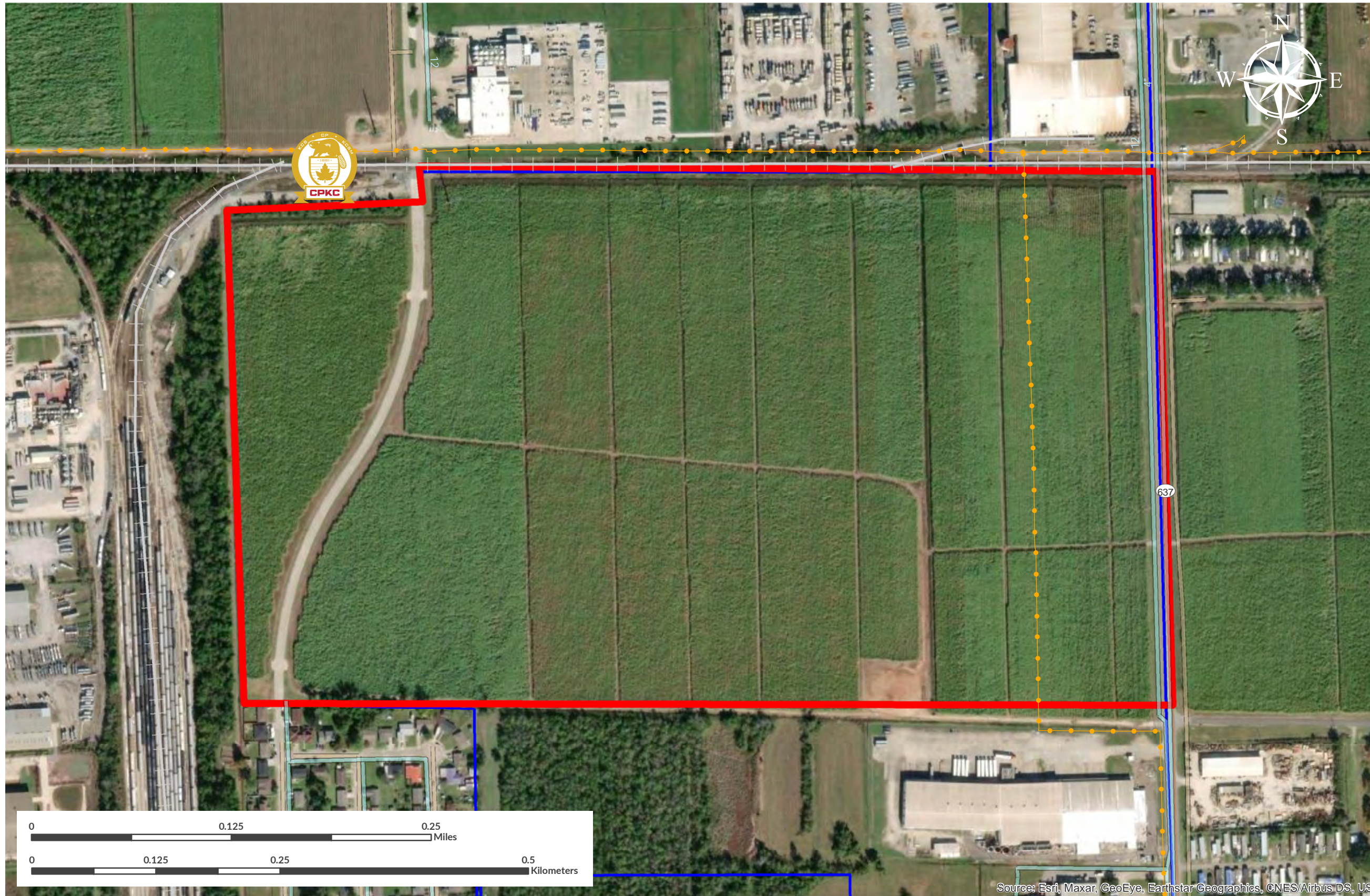





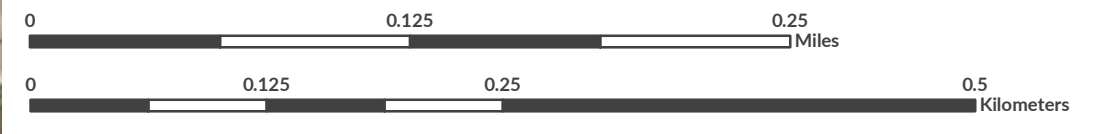
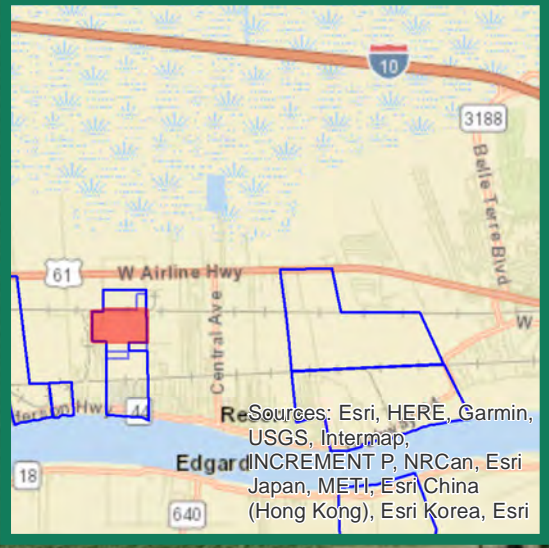
For more information, contact: Micah Cormier, Dir. of Business Dev. & External Affairs | 985.652.9278 | mcormier@portsl.com | www.portsl.com/gis



 SITE ≈ 130 Acres ≈ 53 Hectares	 Interstates
 Resident Industry	 U.S. Highway
	 State Highway
	 Railroads
	 Waterline
	 Wastewater
	 Natural Gas



PortSL/ah updated: 2024-03-14



Source: Esri, Maxar, GeoEye, Earthstar Geographics, CNES/Airbus DS, USDA, AeroGRID, IGN, Esri, Swire, GEBCO, NOAA, Esri, Garmin, GEBCO, NOAA NGDC, and other contributors