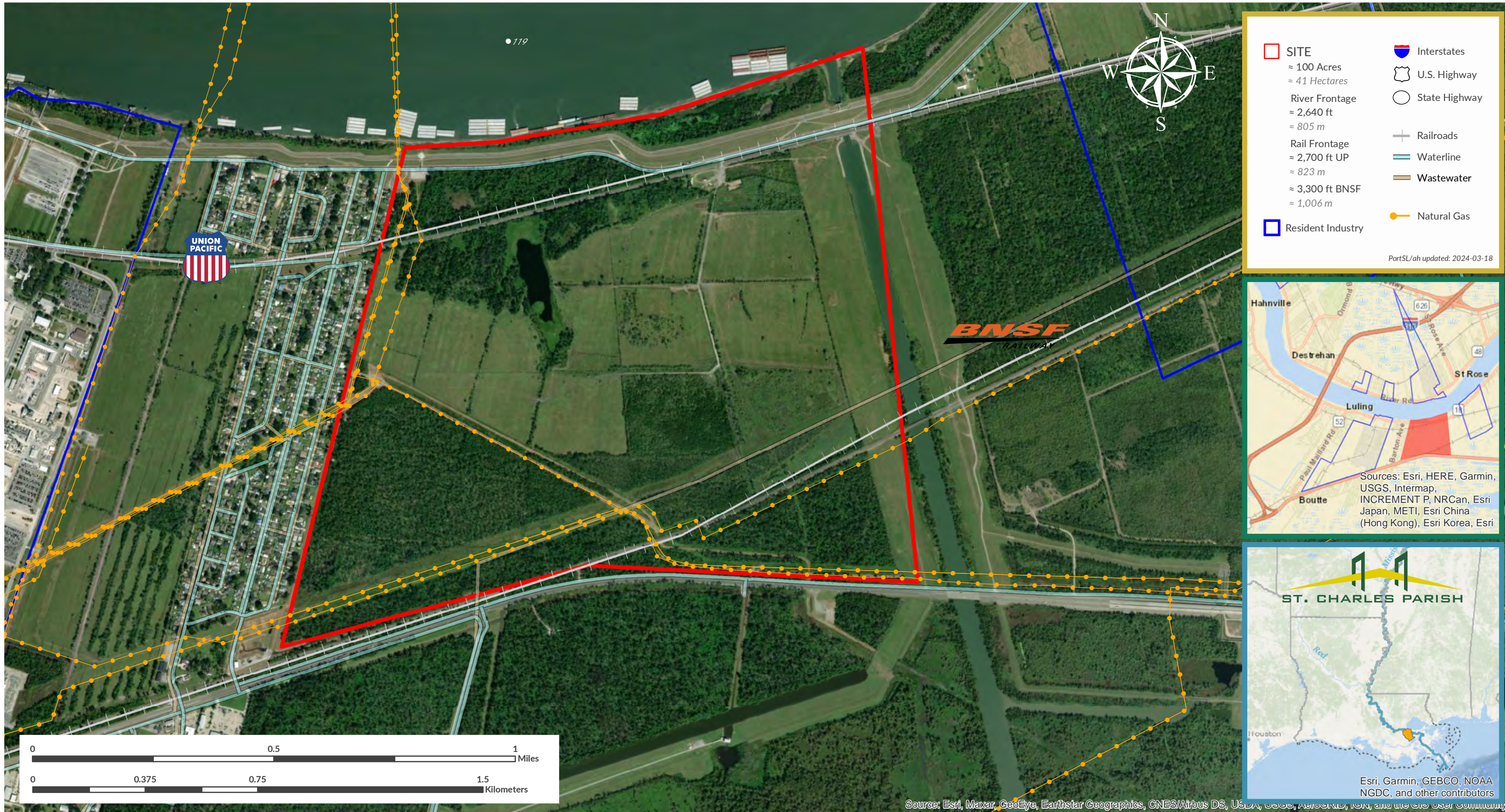


# Davis Levert [ #62 ]

For more information, contact: Micah Cormier, Dir. of Business Dev. & External Affairs | 985.652.9278 | [mcormier@portsl.com](mailto:mcormier@portsl.com) | [www.portsl.com/gis](http://www.portsl.com/gis)



SITE	Resident Industry	Interstates	U.S. Highway
≈ 100 Acres		State Highway	
≈ 41 Hectares		Railroads	
River Frontage		Waterline	
≈ 2,640 ft		Wastewater	
≈ 805 m		Natural Gas	
Rail Frontage			
≈ 2,700 ft UP			
≈ 823 m			
≈ 3,300 ft BNSF			
≈ 1,006 m			

PortSL/ah updated: 2024-03-18

