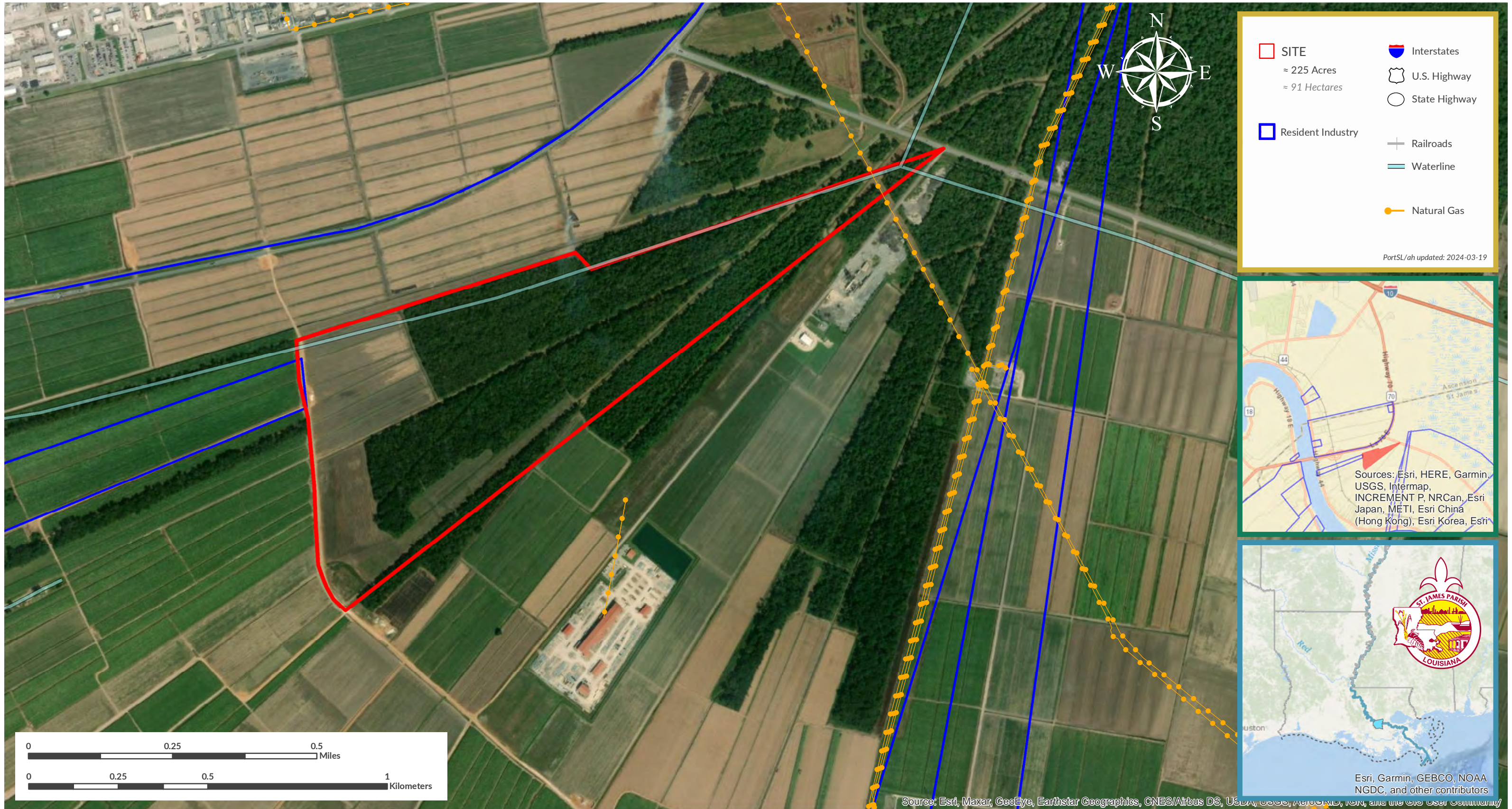


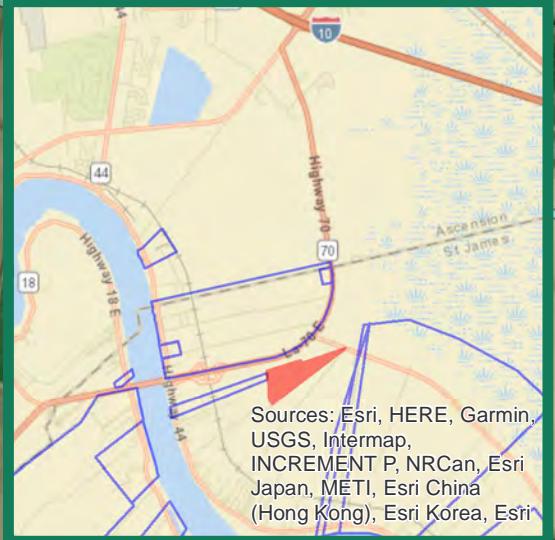
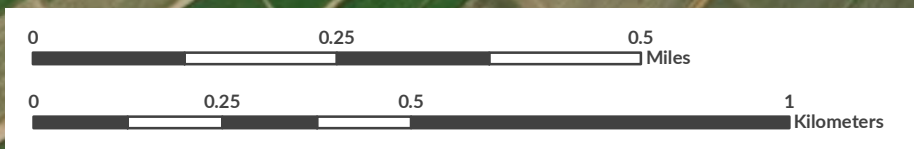
Ancient Domain [#51]

For more information, contact: Micah Cormier, Dir. of Business Dev. & External Affairs | 985.652.9278 | mcormier@portsl.com | www.portsl.com/gis



SITE ≈ 225 Acres ≈ 91 Hectares	Interstates
Resident Industry	U.S. Highway
	State Highway
	Railroads
	Waterline
	Natural Gas

PortSL/ah updated: 2024-03-19



Source: Esri, Maxar, GeoEye, Earthstar Geographics, CNES/Airbus DS, USDA, USGS, AeroGRID, IGN, and the GIS User Community