







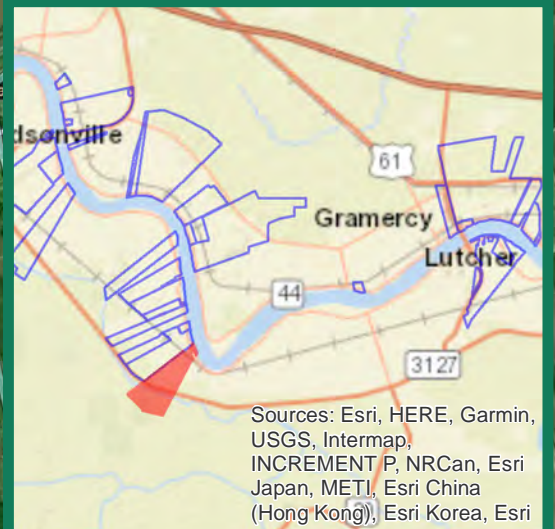
Zeringue/St. Emma [#73]

For more information, contact: Micah Cormier, Dir. of Business Dev. & External Affairs | 985.652.9278 | mcormier@portsl.com | www.portsl.com/gis



- SITE**
 ≈ 1,464 Acres
 ≈ 593 Hectares
- River Frontage
 ≈ 2,254 ft
 ≈ 687 m
- Rail Frontage
 ≈ 3,083 ft
 ≈ 940 m
- Resident Industry**
-  Interstates
-  U.S. Highway
-  State Highway
-  Railroads
-  Waterline
-  Natural Gas

PortSL/ah updated: 2024-03-19



Source: Esri, Maxar, GeoEye, Earthstar Geographics, CNES/Airbus DS, USDA, USGS, AeroGRID, IGN, and the GIS user community