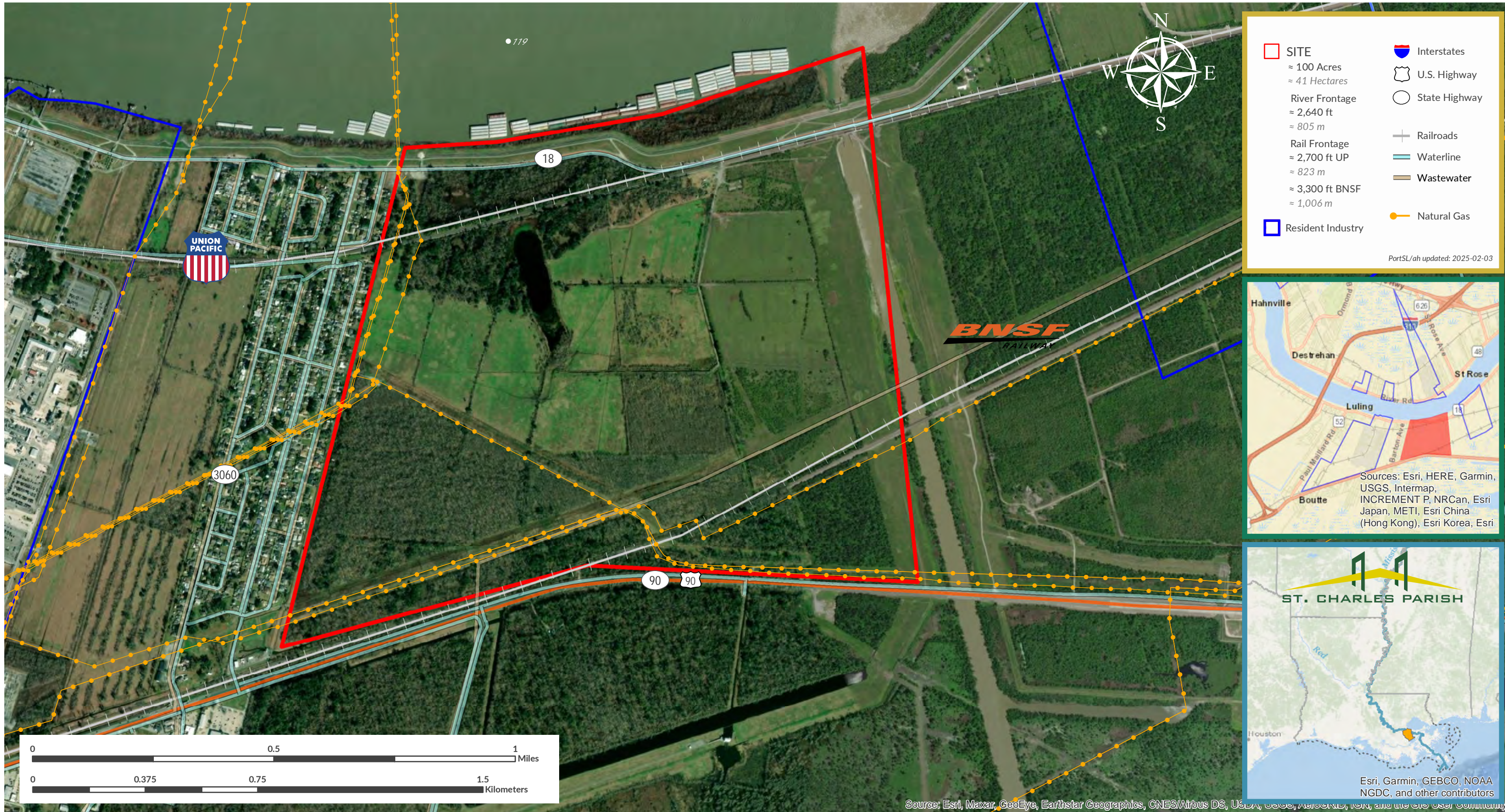


IMTT West Bank [#332]

For information, contact Micah Cormier, Chief Commercial Officer | 985.652.9278 | mcormier@portsl.com | www.portsl.com/gis



SITE	Resident Industry
≈ 100 Acres	
≈ 41 Hectares	
River Frontage	
≈ 2,640 ft	
≈ 805 m	
Rail Frontage	
≈ 2,700 ft UP	
≈ 823 m	
≈ 3,300 ft BNSF	
≈ 1,006 m	
Interstates	U.S. Highway
U.S. Highway	State Highway
Railroads	Waterline
Waterline	Wastewater
Wastewater	Natural Gas

PortSL/ah updated: 2025-02-03

