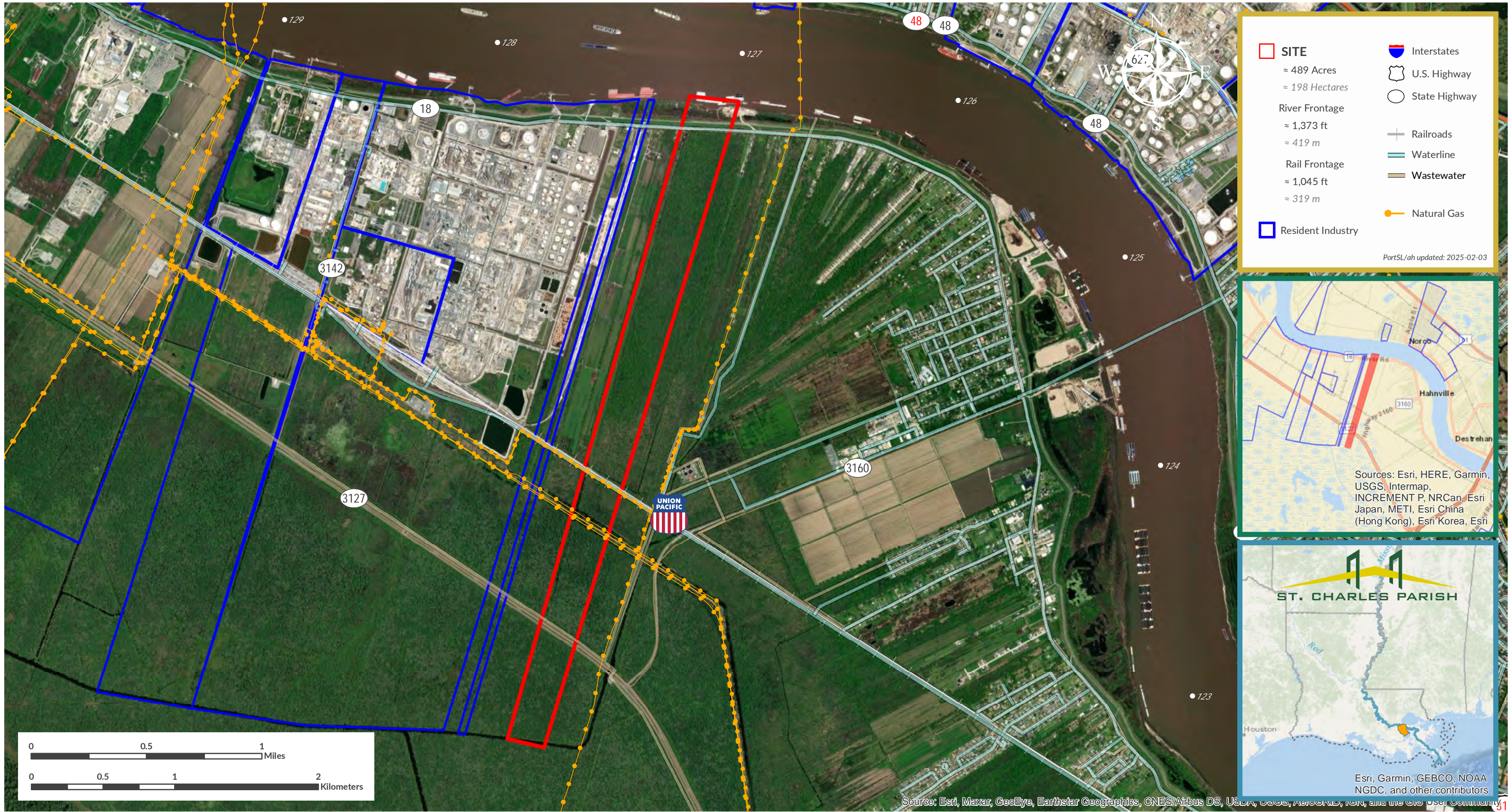


Pelican-Occidental [#334]

For information, contact Micah Cormier, Chief Commercial Officer | 985.652.9278 | mcormier@portsl.com | www.portsl.com/gis



SITE ≈ 489 Acres ≈ 198 Hectares	Interstates
River Frontage ≈ 1,373 ft ≈ 419 m	U.S. Highway
Rail Frontage ≈ 1,045 ft ≈ 319 m	State Highway
Resident Industry	Railroads
	Waterline
	Wastewater
	Natural Gas

PortSL/ah updated: 2025-02-03

Sources: Esri, HERE, Garmin, USGS, Intermap, INCREMENT P, NRCan, Esri Japan, METI, Esri China (Hong Kong), Esri Korea, Esri

ST. CHARLES PARISH

Esri, Garmin, GEBCO, NOAA, NGDC, and other contributors