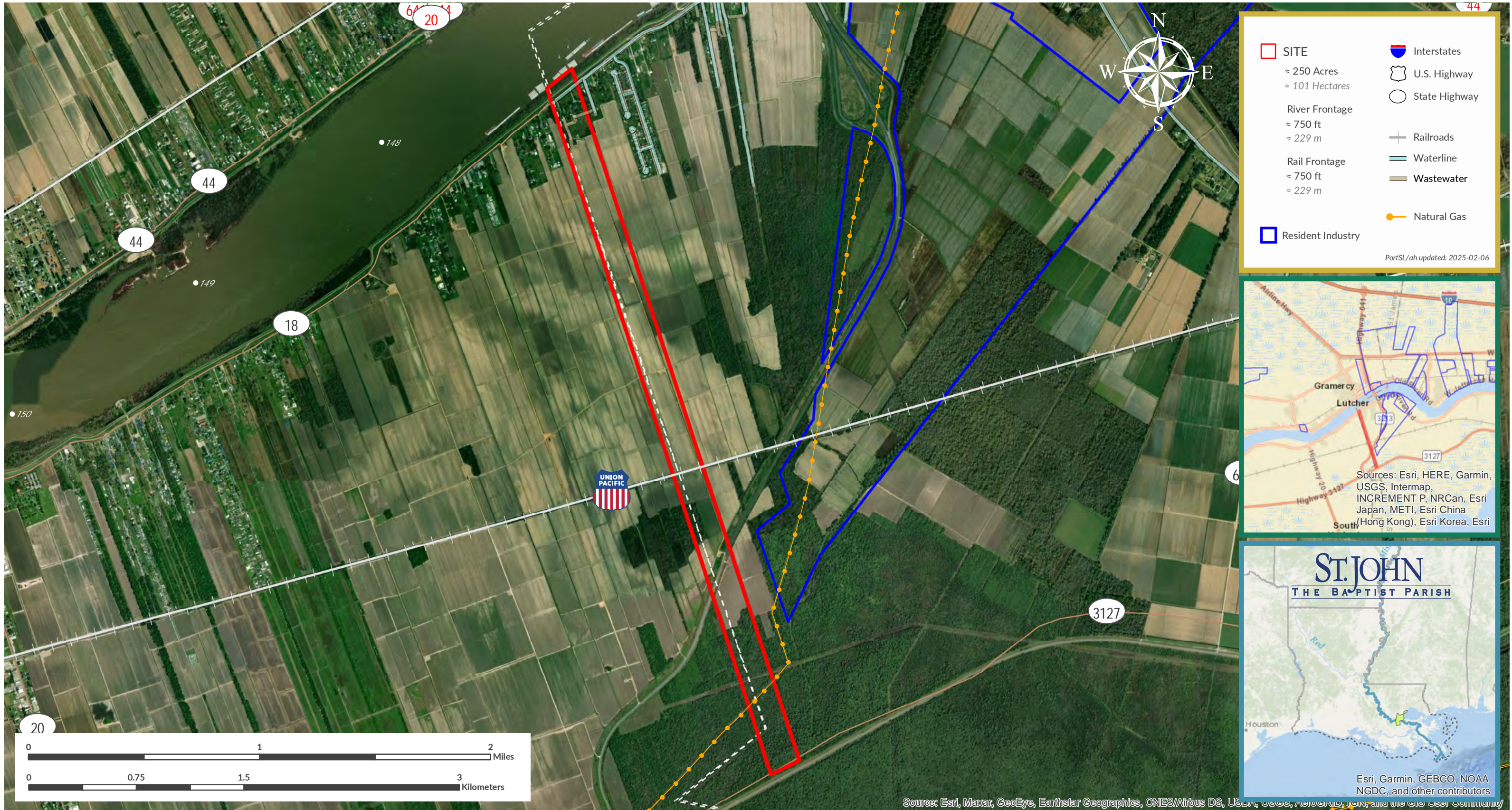


Goodwill [#236]

For information, contact Micah Cormier, Chief Commercial Officer | 985.652.9278 | mcormier@portsl.com | www.portsl.com/gis



SITE	Interstates
≈ 250 Acres	U.S. Highway
≈ 101 Hectares	State Highway
River Frontage	Railroads
≈ 750 ft	Waterline
≈ 229 m	Wastewater
Rail Frontage	Natural Gas
≈ 750 ft	
≈ 229 m	
Resident Industry	

PortSL/ah updated: 2025-02-06

